

GN 113.7 | Ball lock pins

Stainless steel



- 1
- 2
- 3
- 4
- 5
- 6
- 7
- 8
- 9
- 10
- 11
- 12
- 13
- 14
- 15
- 16
- 17
- 18

PIN AND PUSH BUTTON

AISI 303 stainless steel.

BALLS

AISI 420C stainless steel.

SPRING

Stainless steel.

TWO-WING HANDLE

Glass-fibre reinforced polyamide based (PA) technopolymer, black colour, provided with holes for security ring.

WORKING TEMPERATURE

From -30°C to +80°C.

FEATURES AND APPLICATIONS

GN 113.7 ball lock pins are generally used for quick fixation of components or parts to be machined, in particular for elements which need to be removed and reset continuously.

ACCESSORIES ON REQUEST

To optimise the use of these ball lock pins, have been designed:

- ball chains GN 111 (see page 611);
- retaining cables GN 111.2 (see page 612);
- spiral retaining cables GN 111.4 (see page 613).

SPECIAL EXECUTIONS ON REQUEST

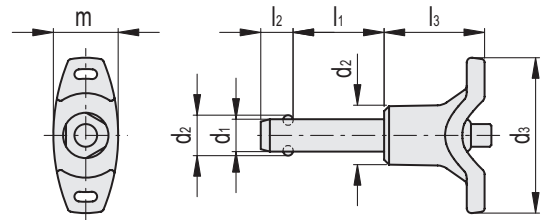
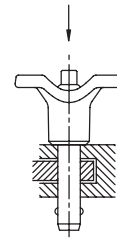
Other dimensions.

INSTRUCTIONS OF USE

By pressing the push button the two balls are freed by exerting a radial retaining action which allows the pin to be engaged or disengaged.



Application example



Code	Description	d1-0.04-0.08	d2	d3	d4	l1	l2±0.2	l3	m	Mounting hole H11	Double sided shearing force [KN]	△
GN.38951	GN 113.7-5-10	5	5.5	40	13.5	10	6	25	15.5	5	14	15
GN.38952	GN 113.7-5-15	5	5.5	40	13.5	15	6	25	15.5	5	14	16
GN.38953	GN 113.7-5-20	5	5.5	40	13.5	20	6	25	15.5	5	14	16
GN.38954	GN 113.7-5-25	5	5.5	40	13.5	25	6	25	15.5	5	14	17
GN.38955	GN 113.7-5-30	5	5.5	40	13.5	30	6	25	15.5	5	14	18
GN.38956	GN 113.7-6-10	6	7	40	13.5	10	7.1	25	15.5	6	21	15
GN.38957	GN 113.7-6-15	6	7	40	13.5	15	7.1	25	15.5	6	21	15
GN.38958	GN 113.7-6-20	6	7	40	13.5	20	7.1	25	15.5	6	21	20
GN.38959	GN 113.7-6-25	6	7	40	13.5	25	7.1	25	15.5	6	21	20
GN.38960	GN 113.7-6-30	6	7	40	13.5	30	7.1	25	15.5	6	21	20
GN.38961	GN 113.7-6-40	6	7	40	13.5	40	7.1	25	15.5	6	21	25
GN.38962	GN 113.7-8-20	8	9.5	48	18	20	8.2	31	20.5	8	38	30
GN.38963	GN 113.7-8-25	8	9.5	48	18	25	8.2	31	20.5	8	38	35
GN.38964	GN 113.7-8-30	8	9.5	48	18	30	8.2	31	20.5	8	38	40
GN.38965	GN 113.7-8-40	8	9.5	48	18	40	8.2	31	20.5	8	38	50
GN.38966	GN 113.7-8-50	8	9.5	48	18	50	8.2	31	20.5	8	38	100
GN.38967	GN 113.7-10-20	10	12	48	18	20	9.6	31	20.5	10	60	40
GN.38968	GN 113.7-10-25	10	12	48	18	25	9.6	31	20.5	10	60	40
GN.38969	GN 113.7-10-30	10	12	48	18	30	9.6	31	20.5	10	60	50
GN.38970	GN 113.7-10-40	10	12	48	18	40	9.6	31	20.5	10	60	60
GN.38971	GN 113.7-10-50	10	12	48	18	50	9.6	31	20.5	10	60	70
GN.38972	GN 113.7-12-25	12	14.5	58	24	25	10.6	36.5	27.5	12	87	94
GN.38973	GN 113.7-12-30	12	14.5	58	24	30	10.6	36.5	27.5	12	87	100
GN.38974	GN 113.7-12-40	12	14.5	58	24	40	10.6	36.5	27.5	12	87	109
GN.38975	GN 113.7-12-50	12	14.5	58	24	50	10.6	36.5	27.5	12	87	120
GN.38976	GN 113.7-12-60	12	14.5	58	24	60	10.6	36.5	27.5	12	87	120
GN.38977	GN 113.7-16-30	16	19	58	24	30	14	36.5	27.5	16	155	140
GN.38978	GN 113.7-16-40	16	19	58	24	40	14	36.5	27.5	16	155	160
GN.38979	GN 113.7-16-50	16	19	58	24	50	14	36.5	27.5	16	155	180
GN.38980	GN 113.7-16-60	16	19	58	24	60	14	36.5	27.5	16	155	180

Indexing and positioning elements