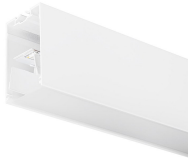


## Mini Continuum II - Direct - Trimless

### MC2 3.6M 4K DALI WHT OPAL

### 2093119



#### Product features

- 2093119 MC2 3.6M 4K DALI WHT OPAL Continuous lines of LED light, white RAL 9016, direct distribution, trimless detail for a seamless finish, suitable for recessed, semi-recessed, surface-mounted or suspended installation either horizontally or vertically, various accessories available, compact and minimalist design based on the Golden Mean, ideal for offices, meeting rooms, corridors, education facilities, museums and libraries, extruded aluminium body, diffuser: opal, colour temperature: 4000K neutral white, total system power: 63W, total fixture output: 7000lm, luminaire efficacy: 111lm/W, LOR: 100%, colour rendering: Ra >80, LED Chromacity: 3 step MacAdam ellipse, lifespan: 66,000 hours L90B10, IR/UV free light source without heat radiation, operating voltage: 220-240V / 50-60Hz, drive current: 800mA, electronic driver, DALI dimmable, electrical protection: CLASS I, IP20, suitable for internal environment only.



#### PRODUCT OVERVIEW

Product name	MC2 3.6M 4K DALI WHT OPAL
Technology	LED
Housing	Aluminium
Mount	Track mounting
Environment	Internal
General application	Education, Hospitality, Office, Retail
ETIM Class	EC002892
E-number FI	4237845
Warranty	5 years
Fixture luminous flux (lm)	7000
Luminaire efficacy (lm/W)	111
LOR (%)	100
Colour temperature (K)	4000
Light colour	Neutral White
CRI (Ra)	80
Colour Variation Initial (SDCM)	SDCM3
Glare control	< 24
Photobiological Risk Group	RG0
Total power consumption (W)	63
Electrical protection	Class I
Control gear type	Electronic ballast
Dimming method	DALI
Minimum dimming level (%)	1
Housing colour	White
IP rating	IP20
IK rating	IK02
Product EAN number	5025768931194

## Mini Continuum II - Direct - Trimless

MC2 3.6M 4K DALI WHT OPAL  
2093119

### DATA TABLE

#### General data

Product name	MC2 3.6M 4K DALI WHT OPAL
Technology	LED
Housing	Aluminium
Mount	Track mounting
Environment	Internal
General application	Education, Hospitality, Office, Retail
Performance ambient temperature Tq (°C)	25
ETIM Class	EC002892
E-number FI	4237845
Warranty	5 years

#### Optical data

Fixture luminous flux (lm)	7000
Luminaire efficacy (lm/W)	111
LOR (%)	100
Colour temperature (K)	4000
Light colour	Neutral White
CRI (Ra)	80
Colour Variation Initial (SDCM)	SDCM3
Adjustable chromaticity	N
Glare control	< 24
Photobiological Risk Group	RG0

#### Electrical data

Total power consumption (W)	63
Mains voltage (V)	220-240V
Lamp power factor	0.98
Electrical protection	Class I
Control gear type	Electronic ballast
Transformer required	Yes
Dimming method	DALI
Minimum dimming level (%)	1
Drive current (mA)	800
Inrush Current (A)	40
Inrush Duration (µs)	178
Energy Efficiency Class (A->G) of contained light source	C
Max. Luminaires per 10A C Breaker	15
Max. Luminaires per 13A C Breaker	20
Max. Luminaires per 16A C Breaker	23
Max. Luminaires per 20A C Breaker	30
Max. Luminaires per 10A B Breaker	9
Max. Luminaires per 13A B Breaker	12
Max. Luminaires per 16A B Breaker	14
Max. Luminaires per 20A B Breaker	18

## Mini Continuum II - Direct - Trimless

### MC2 3.6M 4K DALI WHT OPAL

### 2093119

#### Lifetime data

Lifespan L70 B50	120000
Lifespan L80 B20	120000
Lifespan L90 B10	66000

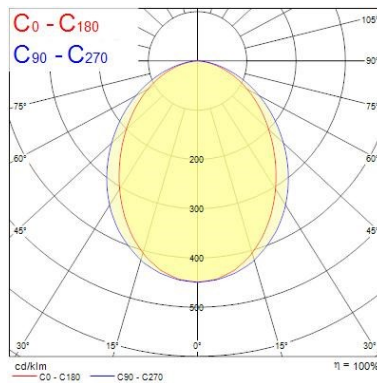
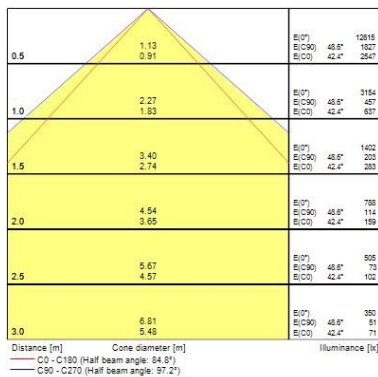
#### Physical data

Housing colour	White
IP rating	IP20
IK rating	IK02
Diffuser finish	Opal
Diffuser material	PC Polycarbonate
Nominal Product Length (mm)	3600
Nominal Product Width (mm)	54
Nominal Product Height (mm)	86
Cutout Dimensions (W x L in mm or Diameter in mm)	60 x 3600
Weight (kg)	7.5
Recessed Depth (mm)	136

#### Packaging

Single packaging type	Carton
Product EAN number	5025768931194
Packaging single length / height (cm)	365.0
Packaging single width (cm)	9.0
Packaging single depth (cm)	10.0
DUN14 (outer)	05025768931194
Units per outer package	1
Packaging outer length / height (cm)	365.0
Packaging outer width (cm)	9.0
Packaging outer depth (cm)	10.0

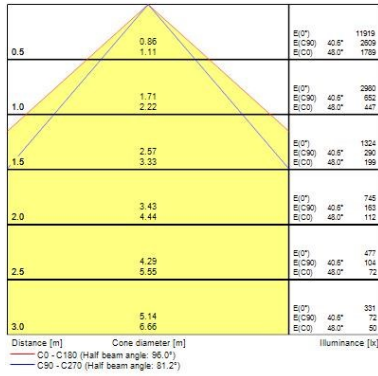
## PHOTOMETRY



## Mini Continuum II - Direct - Trimless

### MC2 3.6M 4K DALI WHT OPAL

### 2093119



## TECHNICAL DRAWINGS

