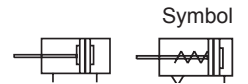


Serie »MI und MSI«

11.DM.08010–11.DM.40600, 11.EM.08010–11.EM.40150



Produktbeschreibung

Rundzylinder in verschiedenen Ausführungen:

- doppelwirkend
- einfachwirkend

Doppelwirkend, Ø 8–25, nach ISO 6432, Bodendeckel mit Gewindezapfen - Schwenkausführung, Typ »CA«

Doppelwirkend, Ø 32–40, Bodendeckel mit Gewindezapfen rund - Schwenkausführung, Typ »CM«

Einfachwirkend, Ø 8–25, Bodendeckel mit Gewindezapfen - Schwenkausführung, Typ »CA«

Einfachwirkend, Ø 32–40, Bodendeckel mit Gewindezapfen rund - Schwenkausführung, Typ »CM«

Technische Daten

| Kolben-Ø [mm] | 8 | 10 | 12 | 16 | 20 | 25 | 32 | 40 |
|-------------------------|--|--|----|------|----|----|------|----|
| Wirkprinzip | Doppelwirkend / einfachwirkend - in Grundstellung eingefahren | | | | | | | |
| Medium | Gefilterte und ungeölte oder geölte Druckluft. (Filtration mit 40 µm Filter notwendig). Bei Verwendung von geölter Druckluft auf kontinuierliche Ölung achten. | | | | | | | |
| Arbeitsdruck | doppelwirkend | 1–10 bar (0,1 bis 1,0 MPa; 14 bis 145 psi) | | | | | | |
| | einfachwirkend | 2–10 bar (0,2 bis 1,0 MPa; 28 bis 145 psi) | | | | | | |
| Prüfdruck | 15 bar (1,5 MPa; 215 psi) | | | | | | | |
| Temperaturbereich | -20 bis 70 °C | | | | | | | |
| Geschwindigkeitsbereich | Doppelwirkend: 30–800 mm/s; einfachwirkend: 50–800 mm/s | | | | | | | |
| Dämpfungstyp | Nicht einstellbar / Dämpfungsring | | | | | | | |
| Anschlussgröße | M5x0,8 | | | 1/8" | | | 1/4" | |

Kolbenhub

| Kolben-Ø [mm] | Standardhub | Max. Kolbenhub | Verfügbare Kolbenhub | |
|----------------|-------------|---|----------------------|-----|
| doppelwirkend | 8 | 10 / 15 / 20 / 25 / 30 / 40 / 50 / 60 / 75 / 80 / 100 / 125 / 150 | 150 | 200 |
| | 10 | 10 / 15 / 20 / 25 / 30 / 40 / 50 / 60 / 75 / 80 / 100 / 125 / 150 / 160 / 175 / 200 | 200 | 200 |
| | 12 | 10 / 15 / 20 / 25 / 30 / 40 / 50 / 60 / 75 / 80 / 100 / 125 / 150 / 160 / 175 / 200 / 250 | 250 | 500 |
| | 16 | 10 / 15 / 20 / 25 / 30 / 40 / 50 / 60 / 75 / 80 / 100 / 125 / 150 / 160 / 175 / 200 / 250 / 300 | 300 | 500 |
| | 20 | | 500 | 700 |
| | 25 | 10 / 15 / 20 / 25 / 30 / 40 / 50 / 60 / 75 / 80 / 100 / 125 / 150 / 160 / 175 / 200 / 250 / | 600 | 700 |
| | 32 | 300 / 350 / 400 / 450 / 500 / 600 | 600 | 700 |
| | 40 | | 600 | 700 |
| einfachwirkend | 8 | | - | - |
| | 10 | 10 / 15 / 20 / 25 / 30 / 40 / 50 | - | - |
| | 12 | | - | - |
| | 16 | 10 / 15 / 20 / 25 / 30 / 40 / 50 / 60 / 75 / 80 / 100 | - | - |
| | 20 | | - | - |
| | 25 | 10 / 15 / 20 / 25 / 30 / 40 / 50 / 60 / 75 / 80 / 100 / 125 / 150 | - | - |
| | 32 | | - | - |
| | 40 | | - | - |

(Werte in mm)

Hinweis: Weitere Hub-Ausführungen auf Anfrage.

Serie »MI und MSI«

11.DM.08010–11.DM.40600, 11.EM.08010–11.EM.40150

Bestellinformationen »MI«, doppeltwirkend

| Typen Nr. | Kolben-Ø | Hub | Anschluss | Kolbenstangenaußengewinde |
|-------------------|----------|--------|-----------|---------------------------|
| 11.DM.08010–08150 | 8 | 10–150 | M5x0,8 | M4x0,7 |
| 11.DM.10010–10200 | 10 | 10–200 | M5x0,8 | M4x0,7 |
| 11.DM.12010–12250 | 12 | 10–250 | M5x0,8 | M6x1,0 |
| 11.DM.16010–16300 | 16 | 10–300 | M5x0,8 | M6x1,0 |
| 11.DM.20010–20600 | 20 | 10–600 | G 1/8 | M8x1,25 |
| 11.DM.25010–25600 | 25 | 10–600 | G 1/8 | M10x1,25 |
| 11.DM.32010–32600 | 32 | 10–600 | G 1/8 | M10x1,25 |
| 11.DM.40010–40600 | 40 | 10–600 | G 1/4 | M12x1,25 |

(Werte in mm)

Bestellinformationen »MSI«, einfachwirkend

| Typen Nr. | Kolben-Ø | Hub | Anschluss | Kolbenstangenaußengewinde |
|-------------------|----------|--------|-----------|---------------------------|
| 11.EM.08010–08050 | 8 | 10–50 | M5x0,8 | M4x0,7 |
| 11.EM.10010–10050 | 10 | 10–50 | M5x0,8 | M4x0,7 |
| 11.EM.12010–12050 | 12 | 10–50 | M5x0,8 | M6x1,0 |
| 11.EM.16010–16100 | 16 | 10–100 | M5x0,8 | M6x1,0 |
| 11.EM.20010–20150 | 20 | 10–150 | G 1/8 | M8x1,25 |
| 11.EM.25010–25150 | 25 | 10–150 | G 1/8 | M10x1,25 |
| 11.EM.32010–32150 | 32 | 10–150 | G 1/8 | M10x1,25 |
| 11.EM.40010–40150 | 40 | 10–150 | G 1/4 | M12x1,25 |

(Werte in mm)

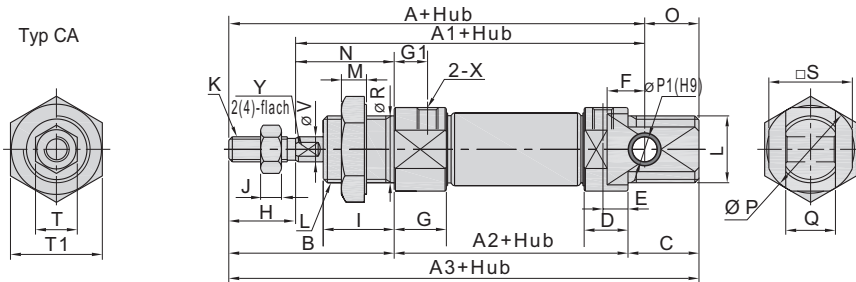
Serie »MI und MSI«

11.DM.08010–11.DM.40600, 11.EM.08010–11.EM.40150

Maße »MI«, doppelwirkend

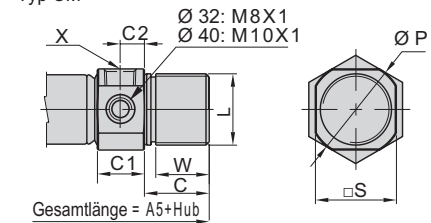
Ø 8–25

Typ CA



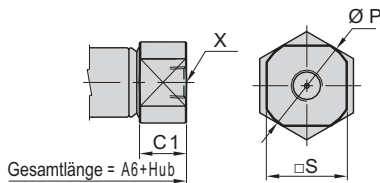
Ø 32–40

Typ CM

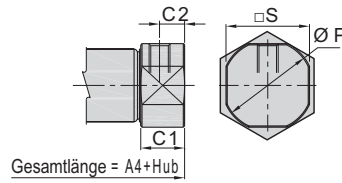


Auf Anfrage:

Typ R



Typ U



| Kolben-Ø | A | A1 | A2 | A3 | A4 | A5 | A6 | B | C | C1 | C2 | D | E | F | G | G1 | H | I |
|----------|-----|-----|----|-----|-------|-----|-----|----|----|------|-----|------|-----|----|------|-----|----|----|
| 8 | 76 | 64 | 46 | 86 | 74 | - | - | 28 | 12 | 9,5 | 5 | 9,5 | 5 | 6 | 11,5 | 7 | 12 | 12 |
| 10 | 76 | 64 | 46 | 86 | 74 | - | - | 28 | 12 | 9,5 | 5 | 9,5 | 5 | 6 | 11,5 | 7 | 12 | 12 |
| 12 | 91 | 75 | 50 | 105 | 88 | - | - | 38 | 17 | 10,5 | 6 | 10,5 | 6 | 9 | 12,5 | 8 | 16 | 17 |
| 16 | 98 | 82 | 56 | 111 | 94 | 111 | 94 | 38 | 17 | 10,5 | 6 | 10,5 | 6 | 9 | 12,5 | 8 | 16 | 17 |
| 20 | 115 | 95 | 62 | 126 | 106 | 126 | 106 | 44 | 20 | 14,5 | 7,5 | 14,5 | 7,5 | 12 | 14,5 | 7,5 | 20 | 20 |
| 25 | 126 | 104 | 65 | 137 | 114,5 | 137 | 115 | 50 | 22 | 16 | 8 | 16 | 8 | 12 | 16 | 8 | 22 | 22 |
| 32 | - | - | - | - | 125 | 140 | 126 | 58 | 14 | 16,5 | 9 | - | - | - | 16,5 | 9 | 20 | 30 |
| 40 | - | - | - | - | 158 | 174 | 158 | 69 | 16 | 22 | 12 | - | - | - | 22 | 12 | 24 | 35 |

| Kolben-Ø | J | K | L | M | N | O | P | P1 | Q | R | S | T | T1 | X | V | W | Y |
|----------|-----|----------|----------|---|----|----|------|----|----|----|------|----|----|--------------------|----|------|----|
| 8 | 2,5 | M4x0,7 | M12x1,25 | 6 | 16 | 10 | 17 | 4 | 8 | 12 | 15 | 7 | 17 | M5x0,8 | 4 | - | - |
| 10 | 2,5 | M4x0,7 | M12x1,25 | 6 | 16 | 10 | 17 | 4 | 8 | 12 | 15 | 7 | 17 | M5x0,8 | 4 | - | - |
| 12 | 5 | M6x1,0 | M16x1,5 | 6 | 22 | 14 | 20 | 6 | 12 | 16 | 18 | 10 | 22 | M5x0,8 | 6 | - | 5 |
| 16 | 5 | M6x1,0 | M16x1,5 | 6 | 22 | 13 | 22 | 6 | 12 | 16 | 20 | 10 | 22 | M5x0,8 | 6 | 13,5 | 5 |
| 20 | 6 | M8x1,25 | M22x1,5 | 7 | 24 | 11 | 29 | 8 | 16 | 22 | 25 | 12 | 29 | 1/8 ⁽¹⁾ | 8 | 16,5 | 6 |
| 25 | 6 | M10x1,25 | M22x1,5 | 7 | 28 | 11 | 33,5 | 8 | 16 | 22 | 30 | 17 | 29 | 1/8 ⁽¹⁾ | 10 | 18,5 | 8 |
| 32 | 6 | M10x1,25 | M30x1,5 | 7 | 38 | - | 37,5 | - | - | 30 | 34,5 | 17 | 36 | 1/8 ⁽¹⁾ | 12 | 10,5 | 10 |
| 40 | 7 | M12x1,25 | M38x1,5 | 8 | 45 | - | 46,5 | - | - | 38 | 42,5 | 17 | 46 | 1/4 ⁽¹⁾ | 16 | 12,5 | 14 |

(Werte in mm, Ausnahme ¹⁾ = Zoll)

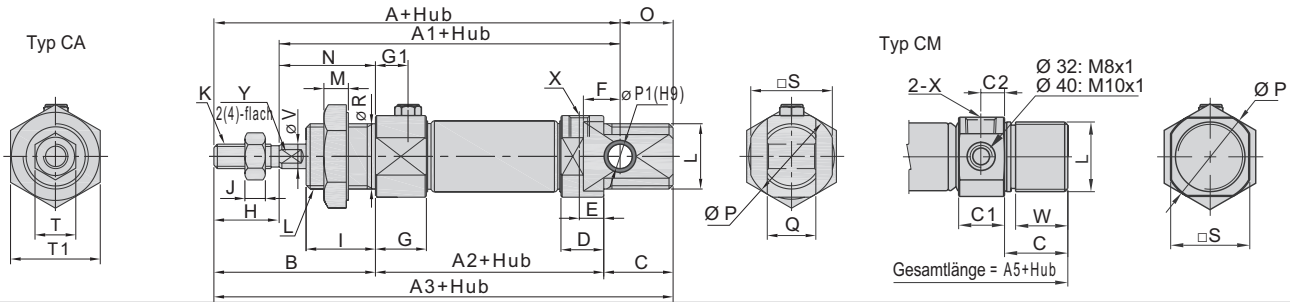
Serie »MI und MSI«

11.DM.08010–11.DM.40600, 11.EM.08010–11.EM.40150

Maße »MSI«, einfachwirkend

Ø 8–25

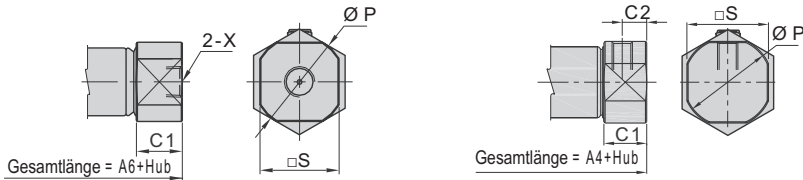
Ø 32–40



Auf Anfrage:

Typ R

Typ U



| Hub | A | | | A1 | | | A2 | | | A3 | | |
|-----------------|------|--------|---------|------|--------|---------|------|--------|---------|------|--------|---------|
| | 0–50 | 51–100 | 101–150 | 0–50 | 51–100 | 101–150 | 0–50 | 51–100 | 101–150 | 0–50 | 51–100 | 101–150 |
| Kolben-Ø | | | | | | | | | | | | |
| 8 | 101 | - | - | 89 | - | - | 71 | - | - | 111 | - | - |
| 10 | 101 | - | - | 89 | - | - | 71 | - | - | 111 | - | - |
| 12 | 116 | - | - | 100 | - | - | 75 | - | - | 130 | - | - |
| 16 | 123 | 148 | - | 107 | 132 | - | 81 | 106 | - | 136 | 161 | - |
| 20 | 140 | 165 | 190 | 120 | 145 | 170 | 87 | 112 | 137 | 151 | 176 | 201 |
| 25 | 151 | 176 | 201 | 129 | 154 | 179 | 90 | 115 | 140 | 162 | 187 | 212 |
| 32 | - | - | - | - | - | - | - | - | - | - | - | - |
| 40 | - | - | - | - | - | - | - | - | - | - | - | - |

(Werte in mm)

| Hub | A4 | | | A5 | | | A6 | | |
|-----------------|-------|--------|---------|------|--------|---------|------|--------|---------|
| | 0–50 | 51–100 | 101–150 | 0–50 | 51–100 | 101–150 | 0–50 | 51–100 | 101–150 |
| Kolben-Ø | | | | | | | | | |
| 8 | 99 | - | - | - | - | - | - | - | - |
| 10 | 99 | - | - | - | - | - | - | - | - |
| 12 | 113 | - | - | - | - | - | - | - | - |
| 16 | 119 | 144 | - | 136 | 161 | - | 119 | 144 | - |
| 20 | 131 | 156 | 181 | 151 | 176 | 201 | 131 | 156 | 181 |
| 25 | 139,5 | 164,5 | 189,5 | 162 | 187 | 212 | 140 | 165 | 190 |
| 32 | 150 | 175 | 200 | 165 | 190 | 215 | 151 | 176 | 201 |
| 40 | 183 | 208 | 233 | 199 | 224 | 249 | 183 | 208 | 233 |

(Werte in mm)

Serie »MI und MSI«

11.DM.08010–11.DM.40600, 11.EM.08010–11.EM.40150

Maße »MSI«, einfachwirkend (Forts.)

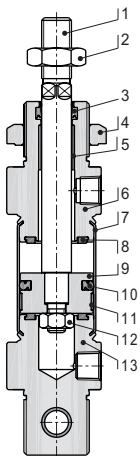
| Kolben-Ø | B | C | C1 | C2 | D | E | F | G | G1 | H | I | J | K |
|----------|----|----|------|-----|------|-----|----|------|-----|----|----|-----|----------|
| 8 | 28 | 12 | 9,5 | 5 | 9,5 | 5 | 6 | 11,5 | 7 | 12 | 12 | 2,5 | M4x0,7 |
| 10 | 28 | 12 | 9,5 | 5 | 9,5 | 5 | 6 | 11,5 | 7 | 12 | 12 | 2,5 | M4x0,7 |
| 12 | 38 | 17 | 10,5 | 6 | 10,5 | 6 | 9 | 12,5 | 8 | 16 | 17 | 5 | M6x1,0 |
| 16 | 38 | 17 | 10,5 | 6 | 10,5 | 6 | 9 | 12,5 | 8 | 16 | 17 | 5 | M6x1,0 |
| 20 | 44 | 20 | 14,5 | 7,5 | 14,5 | 7,5 | 12 | 14,5 | 7,5 | 20 | 20 | 6 | M8x1,25 |
| 25 | 50 | 22 | 16 | 8 | 16 | 8 | 12 | 16 | 8 | 22 | 22 | 6 | M10x1,25 |
| 32 | 58 | 14 | 16,5 | 9 | - | - | - | 16,5 | 9 | 20 | 30 | 6 | M10x1,25 |
| 40 | 69 | 16 | 22 | 12 | - | - | - | 22 | 12 | 24 | 35 | 7 | M12x1,25 |

(Werte in mm)

| Kolben-Ø | L | M | N | O | P | P1 | Q | R | S | T | T1 | X | V | W | Y |
|----------|----------|---|----|----|------|----|----|----|------|----|----|--------------------|----|------|----|
| 8 | M12x1,25 | 6 | 16 | 10 | 17 | 4 | 8 | 12 | 15 | 7 | 17 | M5x0,8 | 4 | - | - |
| 10 | M12x1,25 | 6 | 16 | 10 | 17 | 4 | 8 | 12 | 15 | 7 | 17 | M5x0,8 | 4 | - | - |
| 12 | M16x1,5 | 6 | 22 | 14 | 20 | 6 | 12 | 16 | 18 | 10 | 22 | M5x0,8 | 6 | - | 5 |
| 16 | M16x1,5 | 6 | 22 | 13 | 22 | 6 | 12 | 16 | 20 | 10 | 22 | M5x0,8 | 6 | 13,5 | 5 |
| 20 | M22x1,5 | 7 | 24 | 11 | 29 | 8 | 16 | 22 | 25 | 12 | 29 | 1/8" ¹⁾ | 8 | 16,5 | 6 |
| 25 | M22x1,5 | 7 | 28 | 11 | 33,5 | 8 | 16 | 22 | 30 | 17 | 29 | 1/8" ¹⁾ | 10 | 18,5 | 8 |
| 32 | M30x1,5 | 7 | 38 | - | 37,5 | - | - | 30 | 34,5 | 17 | 36 | 1/8" ¹⁾ | 12 | 10,5 | 10 |
| 40 | M38x1,5 | 8 | 45 | - | 46,5 | - | - | 38 | 42,5 | 17 | 46 | 1/4" ¹⁾ | 16 | 12,5 | 14 |

(Werte in mm, Ausnahme ¹⁾ = Zoll)

Komponenten und Material



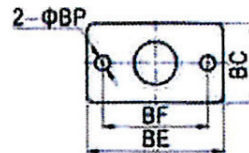
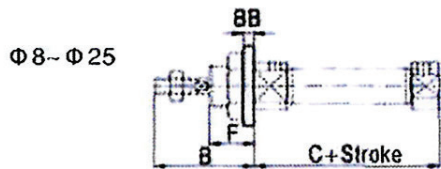
| Nr. | Bauteil | Material | |
|-----|----------------------------|---------------------------|---|
| 1 | Kolbenstange | Edelstahl | |
| 2 | Kolbenstangenmutter | Stahl | |
| 3 | Kolbenstangendichtung | NBR | |
| 4 | Kopfmutter | Stahl | |
| 5 | Führungsbuchse | Ø 8–25 | - |
| | | Ø 32–40 | Verschleißfestes Material (Bronzelegierung) |
| 6 | Zylinderdeckel / Kopfseite | Aluminiumlegierung | |
| 7 | Gehäuse | Edelstahl | |
| 8 | Dämpfungsring | TPU | |
| 9 | Kolben | Ø 8–12 | Edelstahl |
| | | Ø 16–40 | Aluminiumlegierung |
| 10 | Kolben O-Ring | NBR | |
| 11 | Verschleißring | Verschleißfestes Material | |
| 12 | Mutter | Stahl | |
| 13 | Zylinderdeckel / Fußseite | Aluminiumlegierung | |

Zubehör

Flanschbefestigung, Typ »FA« 437.240–437.242



Typ 437.241-1

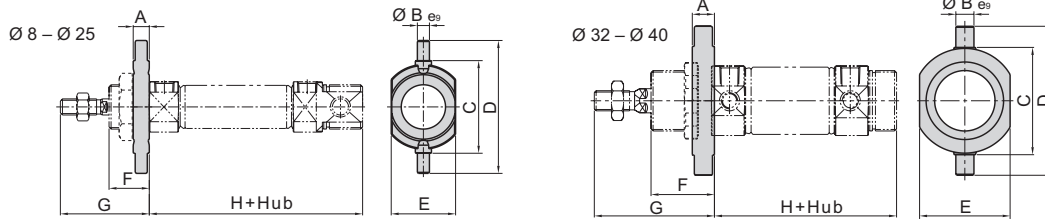


Maße und Material

| Typen Nr. | Kolben-Ø | B | C | BB | BC | BE | BF | BP | F | Material |
|-----------|----------|----|----|-----|----|----|----|-----|----|----------|
| 437.240 | 8 | 28 | 46 | 3 | 22 | 40 | 30 | 4,5 | 12 | Stahl |
| | 10 | 28 | 46 | 3 | 22 | 40 | 30 | 4,5 | 12 | |
| 437.241 | 12 | 38 | 50 | 4 | 30 | 52 | 40 | 5,5 | 17 | |
| | 16 | 38 | 56 | 4 | 30 | 52 | 40 | 5,5 | 17 | |
| 437.241-1 | 12 | 38 | 50 | 3 | 26 | 52 | 40 | 5,5 | 17 | |
| | 16 | 38 | 56 | 3 | 26 | 52 | 40 | 5,5 | 17 | |
| 437.242 | 20 | 44 | 62 | 5 | 40 | 66 | 50 | 6,6 | 20 | |
| | 25 | 50 | 65 | 5 | 40 | 66 | 50 | 6,6 | 22 | |
| 437.242-1 | 20 | 44 | 62 | 3,5 | 38 | 66 | 50 | 7,0 | 20 | |
| | 25 | 50 | 65 | 3,5 | 38 | 66 | 50 | 7,0 | 22 | |

(Werte in mm)

Für Kolben-Ø 32–40 nicht verfügbar.

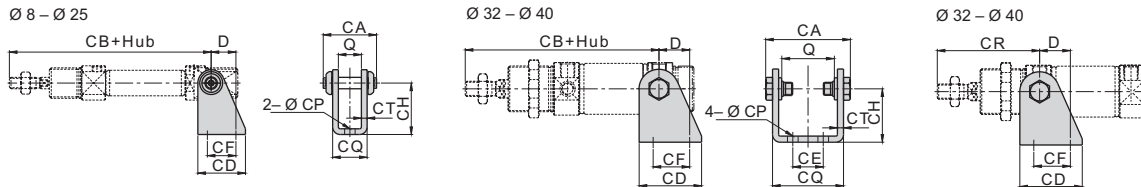
**Schwenkkopfbefestigung, Typ »TC«
437.230–437.234**

Maße und Material

| Typen Nr. | Kolben- \varnothing | A | B | C | D | E | F | G | H | Material |
|-----------|-----------------------|----|----|----|----|----|----|----|-----|-----------|
| 437.230 | 8 | 6 | 4 | 26 | 38 | 20 | 12 | 28 | 58 | Edelstahl |
| | 10 | 6 | 4 | 26 | 38 | 20 | 12 | 28 | 58 | |
| 437.231 | 12 | 8 | 6 | 38 | 58 | 25 | 17 | 38 | 67 | |
| | 16 | 8 | 6 | 38 | 58 | 25 | 17 | 38 | 73 | |
| 437.232 | 20 | 8 | 6 | 46 | 66 | 32 | 20 | 44 | 82 | |
| | 25 | 8 | 6 | 46 | 66 | 32 | 22 | 50 | 87 | |
| 437.233 | 32 | 11 | 9 | 54 | 74 | 45 | 30 | 58 | 82 | |
| 437.234 | 40 | 12 | 10 | 64 | 84 | 55 | 35 | 69 | 101 | |

(Werte in mm)

Zubehör

Schwenklager, Typ »SDB«
437.250–437.254

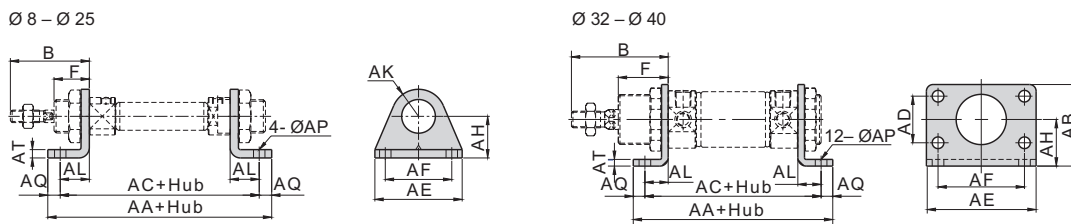


Maße und Material

| Typen Nr. | Kolben-Ø | D | Q | CA | CB | CD | CE | CF | CH | CP | CQ | CT | CR | Material |
|-----------|----------|----|------|------|-----|----|----|------|----|-----|------|-----|----|----------|
| 437.250 | 8 | 11 | 8,1 | 18,4 | 76 | 20 | - | 12,5 | 24 | 4,5 | 13,1 | 2,5 | - | Stahl |
| | 10 | 11 | 8,1 | 18,4 | 76 | 20 | - | 12,5 | 24 | 4,5 | 13,1 | 2,5 | - | |
| 437.251 | 12 | 13 | 12,1 | 28 | 91 | 25 | - | 15 | 27 | 5,5 | 18,1 | 3 | - | |
| | 16 | 13 | 12,1 | 28 | 98 | 25 | - | 15 | 27 | 5,5 | 18,1 | 3 | - | |
| 437.252 | 20 | 16 | 16,1 | 38 | 115 | 32 | - | 20 | 30 | 6,6 | 24,1 | 4 | - | |
| | 25 | 16 | 16,1 | 38 | 126 | 32 | - | 20 | 30 | 6,6 | 24,1 | 4 | - | |
| 437.253 | 32 | 20 | 34,6 | 55,6 | 117 | 41 | 20 | 24 | 35 | 7 | 46,6 | 4 | 67 | |
| 437.254 | 40 | 27 | 42,6 | 69,6 | 146 | 52 | 28 | 30 | 40 | 9 | 58,6 | 5 | 81 | |

(Werte in mm)

Fußbefestigung, Typ »LB«
437.200–437.204

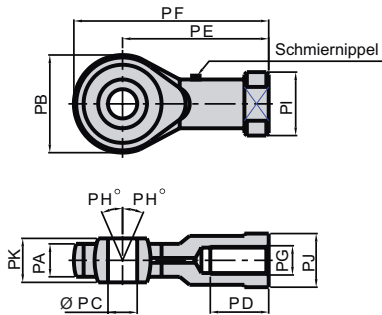


Maße und Material

| Typen Nr. | Kolben-Ø | B | F | AA | AB | AC | AD | AE | AF | AH | AK | AL | AP | AQ | AT | Material |
|-----------|----------|----|----|-----|----|-----|----|----|----|----|----|----|-----|----|----|----------|
| 437.200 | 8 | 28 | 12 | 78 | - | 68 | - | 35 | 25 | 16 | 10 | 11 | 4,5 | 5 | 3 | Stahl |
| | 10 | 28 | 12 | 78 | - | 68 | - | 35 | 25 | 16 | 10 | 11 | 4,5 | 5 | 3 | |
| 437.201 | 12 | 38 | 17 | 90 | - | 78 | - | 42 | 32 | 20 | 13 | 14 | 5,5 | 6 | 4 | |
| | 16 | 38 | 17 | 96 | - | 84 | - | 42 | 32 | 20 | 13 | 14 | 5,5 | 6 | 4 | |
| 437.202 | 20 | 44 | 20 | 112 | - | 96 | - | 54 | 40 | 25 | 20 | 17 | 6,6 | 8 | 5 | |
| | 25 | 50 | 22 | 115 | - | 99 | - | 54 | 40 | 25 | 20 | 17 | 6,6 | 8 | 5 | |
| 437.203 | 32 | 58 | 30 | 110 | 49 | 96 | 28 | 66 | 52 | 28 | - | 14 | 7 | 7 | 4 | |
| 437.204 | 40 | 69 | 35 | 149 | 58 | 129 | 30 | 80 | 60 | 33 | - | 20 | 9 | 10 | 5 | |

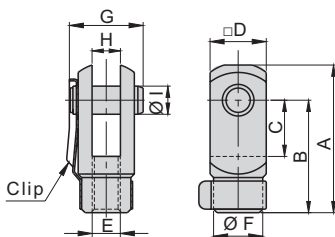
(Werte in mm)

Zubehör

**Gelenkauge, Typ »UNIT«
437.320–437.221**

Maße und Material

| Typen Nr. | Kolben-Ø | PA | PB | PC(H9) | PD | PE | PF | PG | PH | PI | PJ | PK | Material |
|-----------|----------|-----|----|--------|----|----|----|----------|----|------|----|----|----------|
| 437.320 | 8–10 | 6 | 18 | 4 | 10 | 27 | 36 | M4x0,7 | 13 | 12,5 | 10 | 8 | Stahl |
| 437.321 | 12–16 | 6,8 | 20 | 6 | 12 | 30 | 40 | M6x1,0 | 13 | 13 | 11 | 9 | |
| 437.322 | 20 | 9 | 24 | 8 | 16 | 36 | 48 | M8x1,25 | 13 | 16 | 14 | 12 | |
| 437.220 | 25–32 | 11 | 26 | 10 | 20 | 43 | 56 | M10x1,25 | 13 | 19 | 17 | 14 | |
| 437.221 | 40 | 12 | 32 | 12 | 22 | 50 | 66 | M12x1,25 | 13 | 22 | 19 | 16 | |

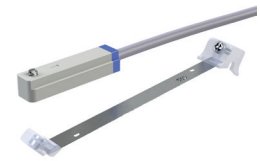
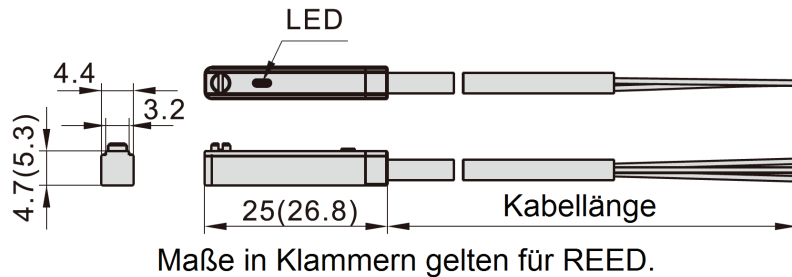
(Werte in mm)

**Gabelkopf, Typ »Y«
437.310–437.313, 437.211**

Maße und Material

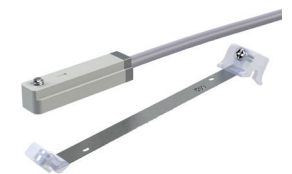
| Typen Nr. | Kolben-Ø | A | B | C | D | E | F | G | H | I | Material |
|-----------|----------|----|----|----|------|----------|------|------|----|----|----------|
| 437.310 | 8–10 | 22 | 16 | 8 | 8 | M4x0,7 | 7 | 11,5 | 4 | 4 | Stahl |
| 437.311 | 12–16 | 32 | 24 | 12 | 12 | M6x1,0 | 10 | 16 | 6 | 6 | |
| 437.312 | 20 | 42 | 32 | 16 | 16 | M8x1,25 | 14 | 21 | 8 | 8 | |
| 437.313 | 25–32 | 52 | 40 | 20 | 19 | M10x1,25 | 18 | 25 | 10 | 10 | |
| 437.211 | 40 | 62 | 48 | 24 | 25,4 | M12x1,25 | 26,2 | 32,4 | 12 | 12 | |

(Werte in mm)

Zubehör

Sensorschalter, Typ »CS1«
235.300–235.357


REED



HALL

Technische Daten

| | REED, NO | HALL, NO, NPN | HALL, NO, PNP |
|-------------------|--------------------------|---------------------------------------|---------------|
| Betriebsspannung | 5...240 V AC/DC | 5...30 V DC | |
| Schaltstrom | 100 mA | max. 30 V / 200 mA | |
| Schaltspannung | max. 10 W | max. 6,0 W | |
| Stromaufnahme | - | max. 5mA | |
| Spannungsabfall | max. 2,5 V bei 100 mA DC | max. 0,7 V | |
| Verluststrom | - | max. 0,01 mA | |
| Max. Frequenz | 200 Hz | 1000 Hz | |
| Stoßfestigkeit | 50 g | | |
| Schutzschaltung | - | verpolungssicher, Überspannungsschutz | |
| Temperaturbereich | -10 °C bis 70 °C* | -10 °C bis 70 °C | |
| Schutzart | IP 64 | IP 64 ** | |

* Hochtemperatursausführung bis 125 °C auf Anfrage verfügbar.

** IP 68 auf Anfrage verfügbar; ausschließlich für Ausführungen mit offenem Kabel.

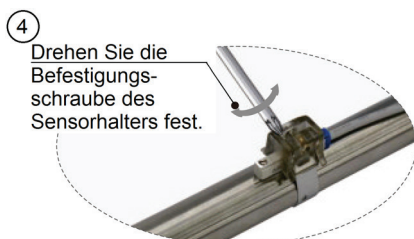
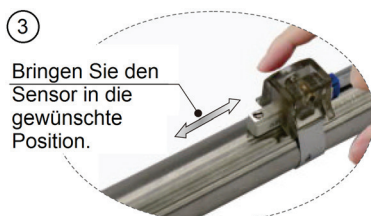
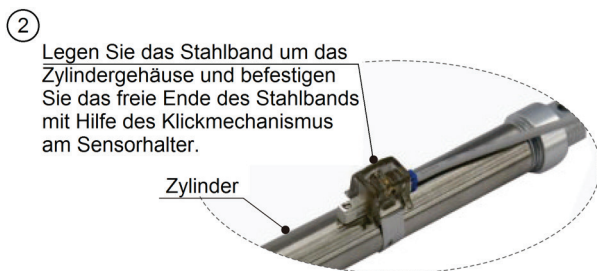
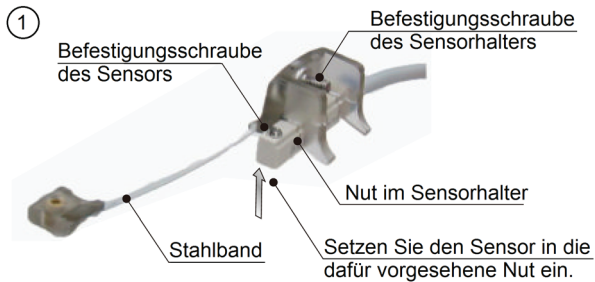
Bestellinformationen

| Artikel Nr. | Typen Nr. | Beschreibung |
|-----------------|-----------------|---|
| 115539 - 115546 | 235.300–235.307 | REED-Sensor, 2-Draht, M8-Stecker, 150 mm Kabel, NO |
| 115547 - 115554 | 235.310–235.317 | REED-Sensor, 2-Draht, 3 m Kabel, NO |
| 115555 - 115562 | 235.320–235.327 | HALL-Sensor, 3-Draht, M8-Stecker, 150 mm Kabel, NO, NPN |
| 115563 - 115570 | 235.330–235.337 | HALL-Sensor, 3-Draht, 3 m Kabel, NO, NPN |
| 115571 - 115578 | 235.340–235.347 | HALL-Sensor, 3-Draht, M8-Stecker, 150 mm Kabel, NO, PNP |
| 115579 - 115586 | 235.350–235.357 | HALL-Sensor, 3-Draht, 3 m Kabel, NO, PNP |
| 118560 | 235.08SH | Sensorhalter für Rundzylinder, Kolben-Ø 8, für Sensor Typ CS1, Edelstahl |
| 118561 | 235.10SH | Sensorhalter für Rundzylinder, Kolben-Ø 10, für Sensor Typ CS1, Edelstahl |
| 118562 | 235.12SH | Sensorhalter für Rundzylinder, Kolben-Ø 12, für Sensor Typ CS1, Edelstahl |
| 118563 | 235.16SH | Sensorhalter für Rundzylinder, Kolben-Ø 16, für Sensor Typ CS1, Edelstahl |
| 118564 | 235.20SH | Sensorhalter für Rundzylinder, Kolben-Ø 20, für Sensor Typ CS1, Edelstahl |
| 118565 | 235.25SH | Sensorhalter für Rundzylinder, Kolben-Ø 25, für Sensor Typ CS1, Edelstahl |
| 118566 | 235.32SH | Sensorhalter für Rundzylinder, Kolben-Ø 32, für Sensor Typ CS1, Edelstahl |
| 118567 | 235.40SH | Sensorhalter für Rundzylinder, Kolben-Ø 40, für Sensor Typ CS1, Edelstahl |

Zubehör

Montage

Zur Montage des Sensors bitte die folgenden Schritte beachten:



Bestellinformationen

| Typen Nr. | Artikel Nr. |
|-------------|-------------|
| 11.DM.08010 | 114771 |
| 11.DM.08015 | 114772 |
| 11.DM.08020 | 114773 |
| 11.DM.08025 | 114774 |
| 11.DM.08030 | 114775 |
| 11.DM.08040 | 114776 |
| 11.DM.08050 | 114777 |
| 11.DM.08060 | 114778 |
| 11.DM.08075 | 114779 |
| 11.DM.08080 | 114780 |
| 11.DM.08100 | 114781 |
| 11.DM.08125 | 114782 |
| 11.DM.08150 | 114783 |
| 11.DM.10010 | 114784 |
| 11.DM.10015 | 114785 |
| 11.DM.10020 | 114786 |
| 11.DM.10025 | 114787 |
| 11.DM.10030 | 114788 |
| 11.DM.10040 | 114789 |
| 11.DM.10050 | 114790 |
| 11.DM.10060 | 114791 |
| 11.DM.10075 | 114792 |
| 11.DM.10080 | 114793 |
| 11.DM.10100 | 114794 |
| 11.DM.10125 | 114795 |
| 11.DM.10150 | 114796 |
| 11.DM.10160 | 114797 |
| 11.DM.10175 | 114798 |
| 11.DM.10200 | 114799 |
| 11.DM.12010 | 114800 |
| 11.DM.12015 | 114801 |
| 11.DM.12020 | 114802 |
| 11.DM.12025 | 114803 |
| 11.DM.12030 | 114804 |
| 11.DM.12040 | 114805 |
| 11.DM.12050 | 114806 |
| 11.DM.12060 | 114807 |
| 11.DM.12075 | 114808 |
| 11.DM.12080 | 114809 |
| 11.DM.12100 | 114810 |
| 11.DM.12125 | 114811 |
| 11.DM.12150 | 114812 |
| 11.DM.12160 | 114813 |
| 11.DM.12175 | 114814 |
| 11.DM.12200 | 114815 |
| 11.DM.12250 | 114816 |

Bestellinformationen

| Typen Nr. | Artikel Nr. |
|-------------|-------------|
| 11.DM.16010 | 114817 |
| 11.DM.16015 | 114818 |
| 11.DM.16020 | 114819 |
| 11.DM.16025 | 114820 |
| 11.DM.16030 | 114821 |
| 11.DM.16040 | 114822 |
| 11.DM.16050 | 114823 |
| 11.DM.16060 | 114824 |
| 11.DM.16075 | 114825 |
| 11.DM.16080 | 114826 |
| 11.DM.16100 | 114827 |
| 11.DM.16125 | 114828 |
| 11.DM.16150 | 114829 |
| 11.DM.16160 | 114830 |
| 11.DM.16175 | 114831 |
| 11.DM.16200 | 114832 |
| 11.DM.16250 | 114833 |
| 11.DM.16300 | 114834 |
| 11.DM.20010 | 114835 |
| 11.DM.20015 | 114836 |
| 11.DM.20020 | 114837 |
| 11.DM.20025 | 114838 |
| 11.DM.20030 | 114839 |
| 11.DM.20040 | 114840 |
| 11.DM.20050 | 114841 |
| 11.DM.20060 | 114842 |
| 11.DM.20075 | 114843 |
| 11.DM.20080 | 114844 |
| 11.DM.20100 | 114845 |
| 11.DM.20125 | 114846 |
| 11.DM.20150 | 114847 |
| 11.DM.20160 | 114848 |
| 11.DM.20175 | 114849 |
| 11.DM.20200 | 114850 |
| 11.DM.20250 | 114851 |
| 11.DM.20300 | 114852 |
| 11.DM.20350 | 114853 |
| 11.DM.20400 | 114854 |
| 11.DM.20450 | 114855 |
| 11.DM.20500 | 114856 |
| 11.DM.20600 | 114857 |
| 11.DM.25010 | 114858 |
| 11.DM.25015 | 114859 |
| 11.DM.25020 | 114860 |
| 11.DM.25025 | 114861 |
| 11.DM.25030 | 114862 |
| 11.DM.25040 | 114863 |
| 11.DM.25050 | 114884 |
| 11.DM.25060 | 114865 |
| 11.DM.25075 | 114866 |
| 11.DM.25080 | 114867 |
| 11.DM.25100 | 114868 |
| 11.DM.25125 | 114869 |

Bestellinformationen

| Typen Nr. | Artikel Nr. |
|-------------|-------------|
| 11.DM.25150 | 114870 |
| 11.DM.25160 | 114871 |
| 11.DM.25175 | 114872 |
| 11.DM.25200 | 114873 |
| 11.DM.25250 | 114874 |
| 11.DM.25300 | 114875 |
| 11.DM.25350 | 114876 |
| 11.DM.25400 | 114877 |
| 11.DM.25450 | 114878 |
| 11.DM.25500 | 114879 |
| 11.DM.25600 | 114880 |
| 11.DM.32010 | 114881 |
| 11.DM.32015 | 114882 |
| 11.DM.32020 | 114883 |
| 11.DM.32025 | 114884 |
| 11.DM.32030 | 114885 |
| 11.DM.32040 | 114886 |
| 11.DM.32050 | 114887 |
| 11.DM.32060 | 114888 |
| 11.DM.32075 | 114889 |
| 11.DM.32080 | 114890 |
| 11.DM.32100 | 114891 |
| 11.DM.32125 | 114892 |
| 11.DM.32150 | 114893 |
| 11.DM.32160 | 114894 |
| 11.DM.32175 | 114895 |
| 11.DM.32200 | 114896 |
| 11.DM.32250 | 114897 |
| 11.DM.32300 | 114898 |
| 11.DM.32350 | 114899 |
| 11.DM.32400 | 114900 |
| 11.DM.32450 | 114901 |
| 11.DM.32500 | 114902 |
| 11.DM.32600 | 114903 |
| 11.DM.40010 | 114904 |
| 11.DM.40015 | 114905 |
| 11.DM.40020 | 114906 |
| 11.DM.40025 | 114907 |
| 11.DM.40030 | 114908 |
| 11.DM.40040 | 114909 |
| 11.DM.40050 | 114910 |
| 11.DM.40060 | 114911 |
| 11.DM.40075 | 114912 |
| 11.DM.40080 | 114913 |
| 11.DM.40100 | 114914 |
| 11.DM.10125 | 114915 |
| 11.DM.40150 | 114916 |
| 11.DM.40160 | 114917 |
| 11.DM.40175 | 114918 |
| 11.DM.40200 | 114919 |
| 11.DM.40250 | 114920 |
| 11.DM.40300 | 114921 |
| 11.DM.40350 | 114922 |

Bestellinformationen

| Typen Nr. | Artikel Nr. |
|-------------|-------------|
| 11.DM.40400 | 114923 |
| 11.DM.40450 | 114924 |
| 11.DM.40500 | 114925 |
| 11.DM.40600 | 114926 |
| 11.EM.08010 | 114927 |
| 11.EM.08015 | 114928 |
| 11.EM.08020 | 114929 |
| 11.EM.08025 | 114930 |
| 11.EM.08030 | 114931 |
| 11.EM.08040 | 114932 |
| 11.EM.08050 | 114933 |
| 11.EM.10010 | 114934 |
| 11.EM.10015 | 114935 |
| 11.EM.10020 | 114936 |
| 11.EM.10025 | 114937 |
| 11.EM.10030 | 114938 |
| 11.EM.10040 | 114939 |
| 11.EM.10050 | 114940 |
| 11.EM.12010 | 114941 |
| 11.EM.12015 | 114942 |
| 11.EM.12020 | 114943 |
| 11.EM.12025 | 114944 |
| 11.EM.12030 | 114945 |
| 11.EM.12040 | 114946 |
| 11.EM.12050 | 114947 |
| 11.EM.16010 | 114948 |
| 11.EM.16015 | 114949 |
| 11.EM.16020 | 114950 |
| 11.EM.16025 | 114951 |
| 11.EM.16030 | 114952 |
| 11.EM.16040 | 114953 |
| 11.EM.16050 | 114954 |
| 11.EM.16060 | 114955 |
| 11.EM.16075 | 114956 |
| 11.EM.16080 | 114957 |
| 11.EM.16100 | 114958 |
| 11.EM.20010 | 114959 |
| 11.EM.20015 | 114960 |
| 11.EM.20020 | 114961 |
| 11.EM.20025 | 114962 |
| 11.EM.20030 | 114963 |
| 11.EM.20040 | 114964 |
| 11.EM.20050 | 114965 |
| 11.EM.20060 | 114966 |
| 11.EM.20075 | 114967 |
| 11.EM.20080 | 114968 |
| 11.EM.20100 | 114969 |
| 11.EM.20125 | 114970 |
| 11.EM.20150 | 114971 |

Bestellinformationen

| Typen Nr. | Artikel Nr. |
|-------------|-------------|
| 11.EM.25010 | 114972 |
| 11.EM.25015 | 114973 |
| 11.EM.25020 | 114974 |
| 11.EM.25025 | 114975 |
| 11.EM.25030 | 114976 |
| 11.EM.25040 | 114977 |
| 11.EM.25050 | 114978 |
| 11.EM.25060 | 114979 |
| 11.EM.25075 | 114980 |
| 11.EM.25080 | 114981 |
| 11.EM.25100 | 114982 |
| 11.EM.25125 | 114983 |
| 11.EM.25150 | 114984 |
| 11.EM.32010 | 114985 |
| 11.EM.32015 | 114986 |
| 11.EM.32020 | 114987 |
| 11.EM.32025 | 114988 |
| 11.EM.32030 | 114989 |
| 11.EM.32040 | 114990 |
| 11.EM.32050 | 114991 |
| 11.EM.32060 | 114992 |
| 11.EM.32075 | 114993 |
| 11.EM.32080 | 114994 |
| 11.EM.32100 | 114995 |
| 11.EM.32125 | 114996 |
| 11.EM.32150 | 114997 |
| 11.EM.40010 | 114998 |
| 11.EM.40015 | 114999 |
| 11.EM.40020 | 115000 |
| 11.EM.40025 | 115001 |
| 11.EM.40030 | 115002 |
| 11.EM.40040 | 115003 |
| 11.EM.40050 | 115004 |
| 11.EM.40060 | 115005 |
| 11.EM.40075 | 115006 |
| 11.EM.40080 | 115007 |
| 11.EM.40100 | 115008 |
| 11.EM.40125 | 115009 |
| 11.EM.40150 | 115010 |

Bestellinformationen

| Typen Nr. | Artikel Nr. |
|-----------|-------------|
| 437.200 | 115804 |
| 437.201 | 115805 |
| 437.202 | 115806 |
| 437.203 | 115807 |
| 437.204 | 115808 |
| 437.240 | 115824 |
| 437.241 | 115825 |
| 437.241-1 | 148900 |
| 437.242 | 115826 |
| 437.242-1 | 148902 |
| 437.250 | 115827 |
| 437.251 | 115828 |
| 437.252 | 115829 |
| 437.253 | 115830 |
| 437.254 | 115831 |
| 437.230 | 115819 |
| 437.231 | 115820 |
| 437.232 | 115821 |
| 437.233 | 115822 |
| 437.234 | 115823 |
| 437.310 | 115832 |
| 437.311 | 115833 |
| 437.312 | 115834 |
| 437.313 | 115835 |
| 437.211 | 115810 |
| 437.320 | 115836 |
| 437.321 | 115837 |
| 437.322 | 115838 |
| 437.220 | 115814 |
| 437.221 | 115815 |
| 235.300 | 115539 |
| 235.301 | 115540 |
| 235.302 | 115541 |
| 235.303 | 115542 |
| 235.304 | 115543 |
| 235.305 | 115544 |
| 235.306 | 115545 |
| 235.307 | 115546 |
| 235.310 | 115547 |
| 235.311 | 115548 |
| 235.312 | 115549 |
| 235.313 | 115550 |
| 235.314 | 115551 |
| 235.315 | 115552 |
| 235.316 | 115553 |
| 235.317 | 115554 |

Bestellinformationen

| Typen Nr. | Artikel Nr. |
|-----------|-------------|
| 235.320 | 115555 |
| 235.321 | 115556 |
| 235.322 | 115557 |
| 235.323 | 115558 |
| 235.324 | 115559 |
| 235.325 | 115560 |
| 235.326 | 115561 |
| 235.327 | 115562 |
| 235.330 | 115563 |
| 235.331 | 115564 |
| 235.332 | 115565 |
| 235.333 | 115566 |
| 235.334 | 115567 |
| 235.335 | 115568 |
| 235.336 | 115569 |
| 235.337 | 115570 |
| 235.340 | 115571 |
| 235.341 | 115572 |
| 235.342 | 115573 |
| 235.343 | 115574 |
| 235.344 | 115575 |
| 235.345 | 115576 |
| 235.346 | 115577 |
| 235.347 | 115578 |
| 235.350 | 115579 |
| 235.351 | 115580 |
| 235.352 | 115581 |
| 235.353 | 115582 |
| 235.354 | 115583 |
| 235.355 | 115584 |
| 235.356 | 115585 |
| 235.357 | 115586 |
| 235.08SH | 118560 |
| 235.10SH | 118561 |
| 235.12SH | 118562 |
| 235.16SH | 118563 |
| 235.20SH | 118564 |
| 235.25SH | 118565 |
| 235.32SH | 118566 |
| 235.40SH | 118567 |