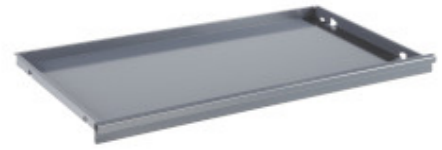


Pull-out shelf

Execution:

- Drawers and pull-out shelves: Full extension with ball bearing, including guide rails. Load-bearing capacity 50 kg. Design: Sheet steel. Colour: Anthracite grey RAL 7016.
- For housing 1000 or 2000 mm (for sliding door cabinets only) wide with divider.



Art. no.	50305 785
Brand	LISTA
Manufacturer Part Number	58.115.000
Effective height	43 mm
Load-carrying capacity	50 kg
Effective width	867 mm
Effective depth	459 mm
Gross Weight	13.000 kg
Product Group	5AN