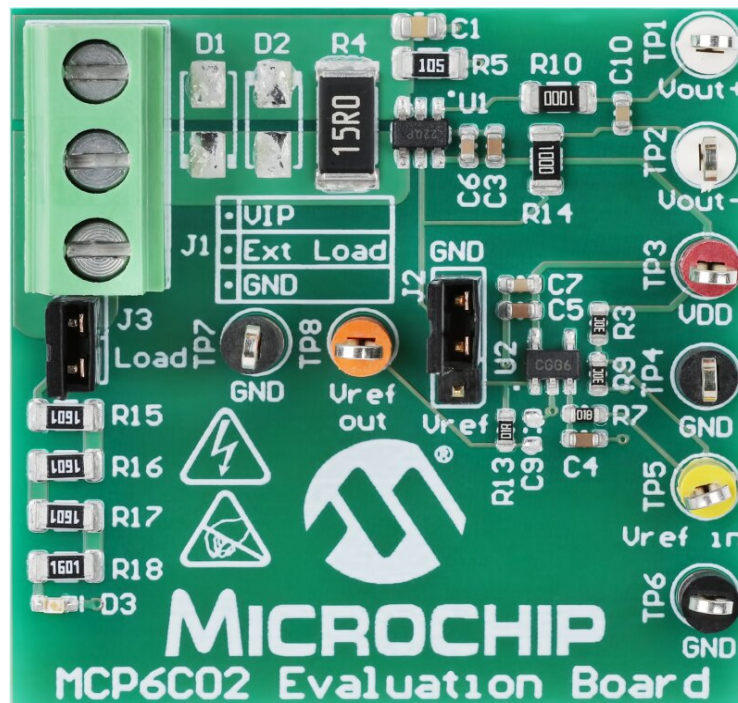
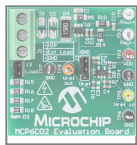


MCP6C02 Evaluation Board ☆

Part Number: ADM01104

Summary:

This board demonstrates the performance of Microchip’s MCP6C02 high-side current sense amplifier. A load is supplied on the board for a convenient demonstration of the evaluation board. Supplying power and a load to the evaluation board will produce a small, measurable voltage drop across a shunt resistor on the evaluation board. This voltage drop is then amplified by the MCP6C02 on the [View More](#)



- Fully populated evaluation board provides for a variety of configuration options
- The evaluation board features the MCP6C02T-020E/CHY, which provides a fixed gain of 20V/V
- The MCP6C02 can be operated on a single-supply (2.0V to 5.5V) and supports an input common mode range from 3.0V to 65V
- On board options to select either ground or an external reference voltage
- The DUT footprint is for the 6-pin SOT-23 package. The evaluation board can also support the MCP6C04 high-side current sense amplifier.

