

reducing sleeve

With cooling canal along the location hole

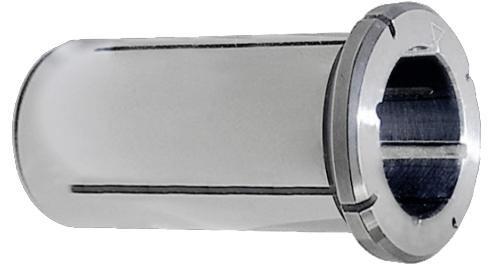
ATORN[®]

Application

For reducing the clamping diameter. For drilling, reaming, milling and tool sharpening.

Version

- Slotted and polished
- Concentricity tolerance $\leq 3\mu\text{m}$
- Concentricity tolerance $\leq 3\mu\text{m}$



Art. No.	23336 615
Chuck clamping diameter	20 mm
Clamping diameter	8 mm
Collar diameter	25 mm
Insertion depth	37 mm
Max. insert depth	50 mm
Length	54 mm
Coolant supply	KKB

EAN-Code

4050293436785