

Wedge clamping device with fixed jaw

Accessories for multi-clamping rails 50/80/120 mm

ATORN[®]

Application

Use on all common ATORN multi-clamping rails

Version

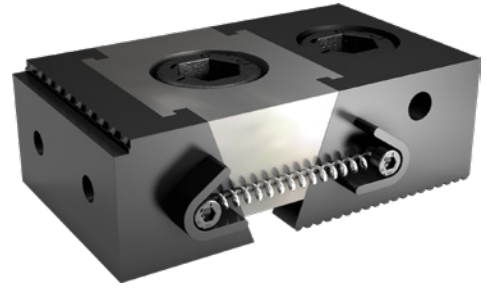
- Easy clamping with fixed jaw. The zero points are therefore always clearly defined on the fixed jaw.

Advantage

- Wedge clamping device and fixed jaw combined in one.
- No need for 2 components

Delivery

1 pc wedge clamping device with fixed jaw



Art. no.	28890 411
Jaws width	32 mm
Jaws height	15 mm
Min./max. clamping width	44-50 mm

EAN-Code

4050293673708