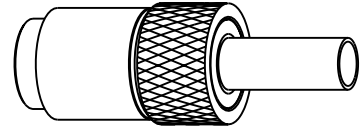
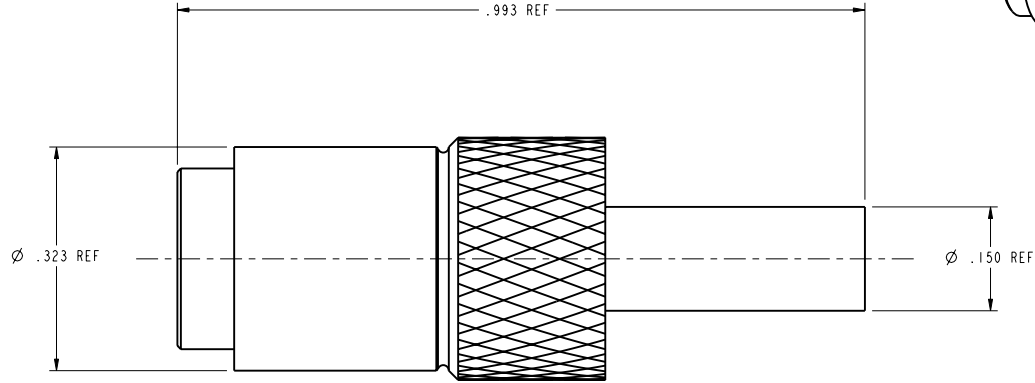


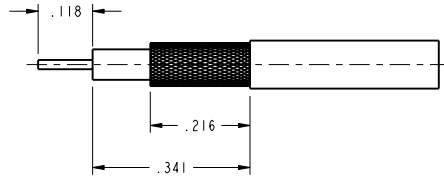
NOTES:

- DO NOT SCALE THIS DRAWING
- MATERIAL AND FINISH:  
 CONTACT: BRASS, GOLD PLATED  
 OUTER CONTACT: BERYLLIUM COPPER, GOLD PLATED  
 INSULATION: PTFE  
 OTHER METAL PARTS: BRASS, NICKEL PLATED,
- CRIMP USING TOOL 227-944, DIE 227-1221-3 CAVITY "A" (.128 HEX)

102-799-16		REVISIONS			
DRAWING NO.	REV	DESCRIPTION	DATE	ECO	APPR
THIRD ANGLE PROJ.	A	RELEASE TO MFG.	08/11/00	43462	C.A.
	B	NOTE 3 WAS .151 HEX	3/21/01	43722	CPM



SCALE 3.000



RECOMMENDED CABLE  
 STRIPPING DIMENSIONS  
 SCALE 4.000

**CUSTOMER OUTLINE DRAWING**  
 ALL OTHER SHEETS ARE FOR INTERNAL USE ONLY

UNLESS OTHERWISE SPECIFIED, DIMENSIONS ARE IN INCHES AND TOLERANCES ARE: 2 PLACE DECIMAL 3 PLACE DECIMAL ANGLES ±.015 (0.381 mm) ±.005 (0.127 mm) ± 1°	MATERIAL	DRAWN CARLOS ATHERTON	DATE 11-Apr-00	TITLE 1.0/2.3 PLUG PUSH PULL FOR RG-316 CABLE	Amphenol Amphenol Corporation Communication and Network Products Division Danbury, CT U.S.A. 06810			
	REFERENCE EAR 967197.1 615X-1534-200 SOCAPEX 3D 799 16	ENGINEER CARLOS ATHERTON	DATE 11-Apr-00			APPROVED T. AUBIN	DATE 8/9/00	
NOTICE - These drawings, specifications, or other data (1) are, and remain the property of Amphenol Corp. (2) must be returned upon request; and (3) are confidential and not to be disclosed to any person other than those to whom they are given by Amphenol Corp. The furnishing of these drawings, specifications, or other data by Amphenol Corp., or to any other person to anyone for any purpose is not to be regarded by implication or otherwise in any manner licensing, granting rights or permitting such holder or any other person to manufacture, use or sell any product, process or design, patented or otherwise, that may in any way be related to or disclosed by said drawings, specifications, or other data.		CAD FILE I:\1023\102-799-16	CODE ID 74868	DWG SIZE B	DRAWING NO. 102-799-16	SCALE: 6.0:1	SHEET 2 OF 2	REV B