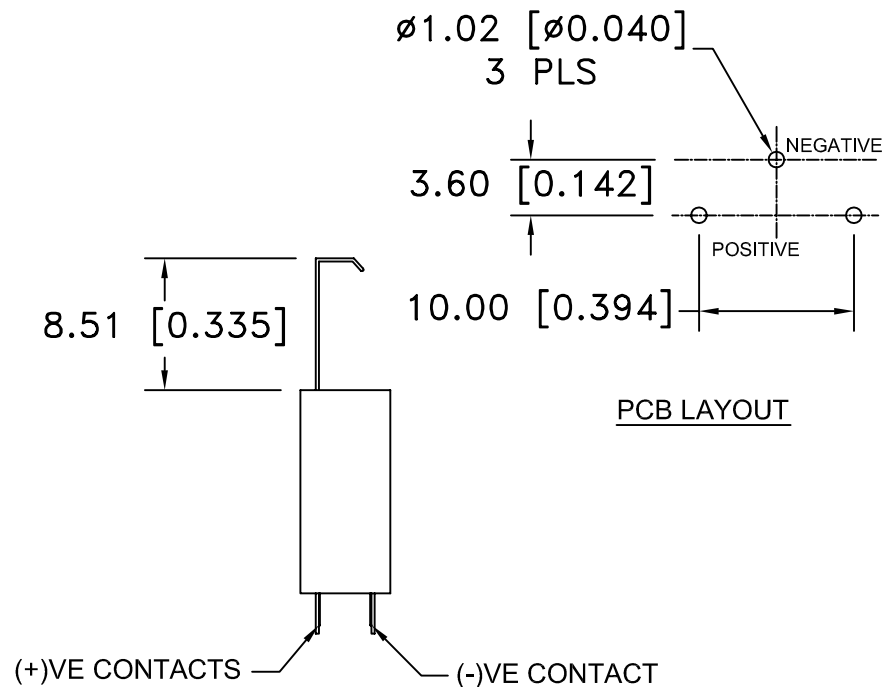
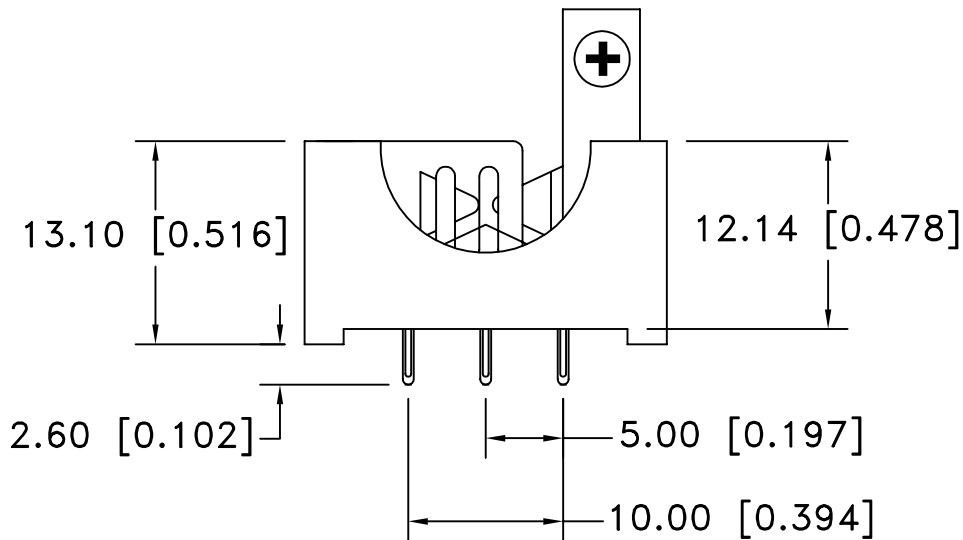
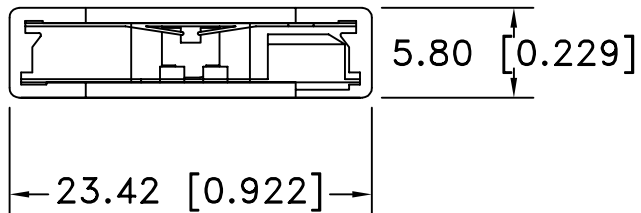



| Date     | SYM | REVISION RECORD                        | AUTH | DR.  | CK. |
|----------|-----|--|------|------|-----|
| 11/06/04 | A   | ADDED PCB LAYOUT<br>DIM. 2.60 WAS 3.52 | T.B. | B.S. |     |
| 10/01/05 | B   | "Ω" SIGN WAS "?"                       | T.B. | B.S. |     |
| 10/22/05 | C   | ADDED "ROHS COMPLIANT"                 | T.B. | B.S. |     |
|          |     |  |      |      |     |
|          |     |  |      |      |     |



**NOTES:**

MATERIAL: GLASS FILLED NYLON 66, UL94V-0  
 COLOR BLUE PER PMS 2718  
 CONTACTS: PHOSPHOR BRONZE, C5191, PLATED TIN  
 (80u" ~ 200u") OVER ALL, **MUST BE LEAD FREE**  
 ELECTRICAL :  
 VOLTAGE: 250V AC  
 CONTACT RESISTANCE: 30mΩ MAX  
 INSULATION RESISTANCE: 1000mΩ AT DC 500V  
 DIELECTRIC STRENGTH: AC 1000V PER MINUTE  
 OPERATION TEMPERATURE: -55°C TO +85°C  
 ROHS COMPLIANT

|                                |   |                           |               |
|--------------------------------|---|---------------------------|---------------|
| Tolerance<br>(Except as noted) |  <b>Memory Protection Devices, Inc</b><br>200 Broad Hollow Road, Farmingdale, New York 11735 |                           |               |
| decimal<br>±.5 (.020)          |   | Scale                     | Drawn By B.S. |
| Fractional<br>± .8 (.030)      | Title<br>BR/CR/DL 2032 VERTICAL BATTERY HOLDER, 3 PINS  |                           |               |
| Angular<br>± 3°                | Date<br>10/22/05  | Drawing Number<br>BK-5058 |               |
|                                |   | Approved By T.B.          |               |