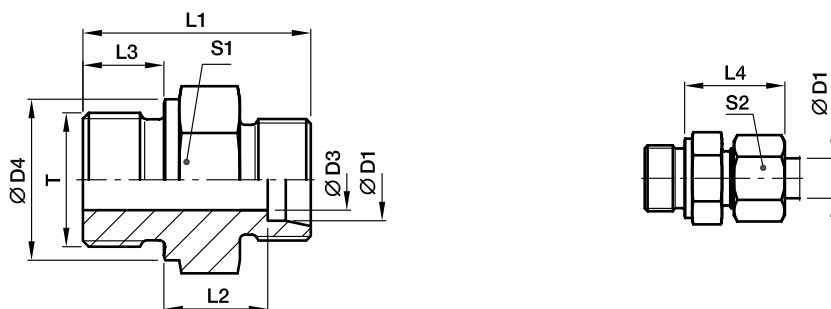


## GE-M Przyłączka prosta

Końcówka z gwintem zewnętrznym metrycznym i metalową krawędzią uszczelniającą (ISO 9974) / Końcówka EO ze stożkiem 24°



| Szereg          | D1      | T       | D3 | D4   | L1   | L2   | L3 | L4 | S1 | S2  | Ciężar g/szt. | Kod zamawiania* | PN (bar) <sup>1)</sup> |     |     |
|-----------------|---------|---------|----|------|------|------|----|----|----|-----|---------------|-----------------|------------------------|-----|-----|
|                 |         |         |    |      |      |      |    |    |    |     |               |                 | CF                     | 71  | MS  |
| L <sup>3)</sup> | 06      | M10x1   | 4  | 14   | 23.5 | 8.5  | 8  | 23 | 14 | 14  | 13            | GE06LM          | 315                    | 315 | 200 |
|                 | 08      | M12x1.5 | 6  | 17   | 29.0 | 10.0 | 12 | 25 | 17 | 17  | 22            | GE08LM          | 315                    | 315 | 200 |
|                 | 10      | M14x1.5 | 7  | 19   | 30.0 | 11.0 | 12 | 26 | 19 | 19  | 31            | GE10LM          | 315                    | 315 | 200 |
|                 | 10      | M10x1   | 4  | 14   | 25.5 | 10.5 | 8  | 25 | 17 | 19  | 20            | GE10LM10X1      | 315                    | 315 |     |
|                 | 10      | M12x1.5 | 6  | 17   | 30.0 | 11.0 | 12 | 26 | 17 | 19  | 25            | GE10LM12X1.5    | 315                    | 315 |     |
|                 | 10      | M16x1.5 | 8  | 21   | 31.5 | 12.0 | 12 | 27 | 22 | 19  | 41            | GE10LM16X1.5    | 315                    | 315 |     |
|                 | 10      | M18x1.5 | 8  | 23   | 31.5 | 12.5 | 12 | 27 | 24 | 19  | 50            | GE10LM18X1.5    | 315                    | 315 |     |
|                 | 10      | M22x1.5 | 8  | 27   | 35.0 | 14.0 | 14 | 29 | 27 | 19  | 72            | GE10LM22X1.5    | 315                    | 315 |     |
|                 | 12      | M14x1.5 | 7  | 19   | 30.0 | 11.0 | 12 | 26 | 19 | 22  | 30            | GE12LM14X1.5    | 315                    | 315 |     |
|                 | 12      | M16x1.5 | 9  | 21   | 31.5 | 12.5 | 12 | 27 | 22 | 22  | 40            | GE12LM          | 315                    | 315 |     |
|                 | 12      | M18x1.5 | 10 | 23   | 31.5 | 12.5 | 12 | 27 | 24 | 22  | 47            | GE12LM18X1.5    | 315                    | 315 |     |
|                 | 12      | M22x1.5 | 10 | 27   | 35.0 | 14.0 | 14 | 29 | 27 | 22  | 76            | GE12LM22X1.5    | 315                    | 315 |     |
|                 | 15      | M16x1.5 | 9  | 21   | 32.0 | 13.0 | 12 | 28 | 24 | 27  | 50            | GE15LM16X1.5    | 250                    | 250 |     |
|                 | 15      | M18x1.5 | 11 | 23   | 32.5 | 13.5 | 12 | 29 | 24 | 27  | 52            | GE15LM          | 250                    | 250 | 160 |
|                 | 15      | M22x1.5 | 12 | 27   | 36.0 | 15.0 | 14 | 30 | 27 | 27  | 77            | GE15LM22X1.5    | 250                    | 250 |     |
|                 | 18      | M18x1.5 | 11 | 23   | 33.5 | 14.0 | 12 | 30 | 27 | 32  | 68            | GE18LM18X1.5    | 250                    | 250 |     |
|                 | 18      | M22x1.5 | 14 | 27   | 36.0 | 14.5 | 14 | 31 | 27 | 32  | 77            | GE18LM          | 250                    | 250 | 160 |
|                 | 22      | M22x1.5 | 14 | 27   | 38.0 | 16.5 | 14 | 33 | 32 | 36  | 92            | GE22LM22X1.5    | 160                    | 160 |     |
| 22              | M26x1.5 | 18      | 31 | 40.0 | 16.5 | 16   | 33 | 32 | 36 | 102 | GE22LM        | 160             | 160                    | 100 |     |
| 28              | M33x2   | 23      | 39 | 43.0 | 17.5 | 18   | 34 | 41 | 41 | 168 | GE28LM        | 160             | 160                    | 100 |     |
| 35              | M42x2   | 30      | 49 | 48.0 | 17.5 | 20   | 39 | 50 | 50 | 280 | GE35LM        | 160             | 160                    | 100 |     |
| 42              | M48x2   | 36      | 55 | 52.0 | 19.0 | 22   | 42 | 55 | 60 | 354 | GE42LM        | 160             | 160                    | 100 |     |
| S <sup>4)</sup> | 06      | M12x1.5 | 4  | 17   | 32.0 | 13.0 | 12 | 28 | 17 | 17  | 30            | GE06SM          | 400                    | 400 | 250 |
|                 | 06      | M14x1.5 | 4  | 19   | 34.0 | 15.0 | 12 | 30 | 19 | 17  | 42            | GE06SM14X1.5    | 400                    | 400 |     |
|                 | 08      | M14x1.5 | 5  | 19   | 34.0 | 15.0 | 12 | 30 | 19 | 19  | 43            | GE08SM          | 400                    | 400 | 250 |
|                 | 10      | M16x1.5 | 7  | 21   | 34.5 | 15.0 | 12 | 31 | 22 | 22  | 54            | GE10SM          | 400                    | 400 | 250 |
|                 | 12      | M18x1.5 | 8  | 23   | 36.5 | 17.0 | 12 | 33 | 24 | 24  | 72            | GE12SM          | 400                    | 400 | 250 |
|                 | 12      | M14x1.5 | 5  | 19   | 36.0 | 16.5 | 12 | 33 | 22 | 24  | 60            | GE12SM14X1.5    | 400                    | 400 |     |
|                 | 12      | M22x1.5 | 8  | 27   | 39.0 | 17.5 | 14 | 34 | 27 | 24  | 103           | GE12SM22X1.5    | 400                    | 400 |     |
|                 | 14      | M20x1.5 | 10 | 25   | 41.0 | 19.0 | 14 | 37 | 27 | 27  | 95            | GE14SM          | 400                    | 400 | 250 |
|                 | 16      | M18x1.5 | 8  | 23   | 38.5 | 18.0 | 12 | 36 | 27 | 30  | 88            | GE16SM18X1.5    | 400                    | 400 |     |
|                 | 16      | M22x1.5 | 12 | 27   | 41.0 | 18.5 | 14 | 37 | 27 | 30  | 97            | GE16SM          | 400                    | 400 | 250 |
|                 | 20      | M27x2   | 16 | 32   | 47.0 | 20.5 | 16 | 42 | 32 | 36  | 155           | GE20SM          | 400                    | 400 | 250 |
|                 | 25      | M33x2   | 20 | 39   | 53.0 | 23.0 | 18 | 47 | 41 | 46  | 268           | GE25SM          | 250                    | 250 | 160 |
|                 | 30      | M42x2   | 25 | 49   | 57.0 | 23.5 | 20 | 50 | 50 | 50  | 421           | GE30SM          | 160                    | 160 | 100 |
|                 | 38      | M48x2   | 32 | 55   | 64.0 | 26.0 | 22 | 57 | 55 | 60  | 568           | GE38SM          | 160                    | 160 | 100 |

<sup>1)</sup> Jeśli w tabeli podano wartość ciśnienia, wyrób jest w aktualnej ofercie.

<sup>3)</sup> L = szereg lekki ; <sup>4)</sup> S = szereg ciężki

$\frac{PN (bar)}{10} = PN (MPa)$

Dostawa bez nakrętki i pierścienia. Informacje o zamawianiu kompletnych łączników - patrz strona 17.

\*W zależności od żądanego materiału i pokrycia powierzchni do kodu należy dodać jeden z poniższych przyrostków.

| Przyrostki w kodzie zamawiania     |  |           |
|------------------------------------|--|-----------|
| Materiał                           | Przyrostek oznaczający rodzaj powierzchni i materiał | Przykład  |
| Stal ocynkowana, bez chromu Cr(VI) | CFX  | GE16SMCFX |
| Stal nierdzewna                    | 71X  | GE16SM71X |
| Mosiądz                            | MSX  | GE16SMMSX |