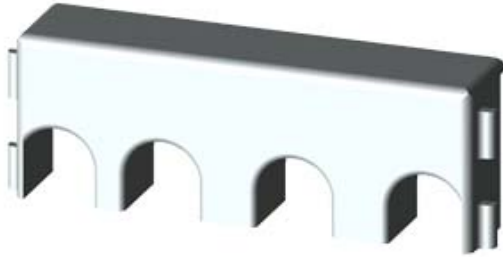


TOUCH PROTECTION COVER FOR 3RU21 LOAD
SIDE SZ S00, MAIN CIRCUIT: RING CABLE LUG



General technical data:

product brand name		SIRIUS
Product designation		terminal cover
Design of the product		shock protection for ring cable lug connection
Ambient temperature		
• during storage	°C	-55 ... +80
• during operation	°C	-20 ... +60

Installation/ mounting/ dimensions:

Mounting type		clip-on
Width	mm	45
Height	mm	18
Depth	mm	9

Certificates/ approvals:

Shipping Approval



ABS

Further information

Information- and Downloadcenter (Catalogs, Brochures,...)

<http://www.siemens.com/industrial-controls/catalogs>

Industry Mall (Online ordering system)

<http://www.siemens.com/industrymall>

Cax online generator

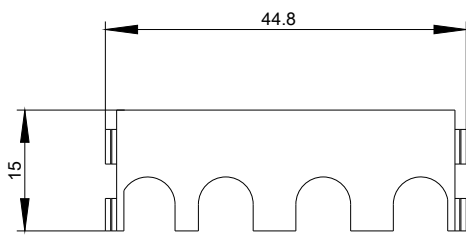
<http://support.automation.siemens.com/WW/CAXorder/default.aspx?lang=en&mlfb=3RU29163BJ20>

Service&Support (Manuals, Certificates, Characteristics, FAQs,...)

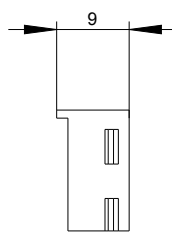
<http://support.automation.siemens.com/WW/view/en/3RU29163BJ20/all>

Image database (product images, 2D dimension drawings, 3D models, device circuit diagrams, EPLAN macros, ...)

<http://www.automation.siemens.com/bilddb/index.aspx?attID9=3RU29163BJ20&lang=en>



last modified:



15.01.2015