

Utica® Torque Limiting Screwdrivers

Standard Models



- Standard product calibrated right hand only. Left hand calibration on request.
- Choice of adjustable models with precision micrometer scale or factory preset models.
- U.S. Standard or metric scales
- Precision micrometer scale (adjustable models) calibrated in inch-ounces or inch-pounds. Metric models: cm-kg.
- Easy-release bit holders securely retain bits during operation while permitting easy removal.
- Anti-backlash design for repeatability.
- Meets or exceeds ASME B107.14M and ISO 6789 specifications.
- Adjustable model accuracy is $\pm 6\%$ of setting, starting at 20% of full scale to full scale. Right hand only.

Adjustable Models

| Model No. | Range | Collar Color | Increments | Hex Drive | Weight | |
|-----------|-------|--------------|------------|-----------|--------|-----|
| | | | | | lbs. | kg. |

U.S. Standard

| | | | | | | |
|--------|----------------|-------|-----------|------------|-----|-----|
| TS-100 | 20–100 in.-oz. | Black | 2 in.-oz. | 1/4 Female | .50 | .23 |
| TS-30 | 6–30 in.-lb. | Red | 1 in.-lb. | 1/4 Female | .50 | .23 |
| TS-35 | 6–36 in.-lb. | Blue | 1 in.-lb. | 1/4 Female | .50 | .23 |

Metric

| | | | | | | |
|--------|-----------|------|-------|------------|-----|-----|
| TS-3M* | .7–3.5 Nm | Gold | .1 Nm | 1/4 Female | .50 | .23 |
|--------|-----------|------|-------|------------|-----|-----|

If calibration certification is required, request at time of purchase (extra charge).

Preset Models (Preset models are designed for highly repetitive assembly line operations.)

| Model No. | Range | | | | Hex Drive |
|-----------|---------|---------|---------|--------|------------|
| | in.-oz. | in.-lb. | Nm | cm-kg | |
| TS-SN-1 | 20–150 | 1.5–10 | .15–1.1 | 1.5–12 | 1/4 Female |
| TS-SN-2 | 128–640 | 8–40 | 1–4.5 | 9–45 | 1/4 Female |

If calibration certification is required, request at time of purchase (extra charge).

NOTE: When ordering preset tools, specify desired torque setting.



TS-30

TS-SN-1

Utica® Torque Limiting Screwdrivers

Standard Model Accessories & Kits

Hex Bits



| Part No. | Hex Size | Cap Screw Size | Set Screw Size | Flathead Screw Size |
|----------|----------|----------------|----------------|---------------------|
| 185-000X | 050 | 0 | 3,4 | 1,2 |
| 185-00X | 1/16 | 1 | 5,6 | 3,4 |
| 185-0X | 5/64 | 2,3 | 8 | 5,6 |
| 185-1X | 3/32 | 4,5 | 10 | 8 |
| 185-9X | 7/64 | 6 | - | - |
| 185-2X | 1/8 | - | 1/4 | 10 |
| 185-10X | 9/64 | 8 | - | - |
| 185-3X | 5/32 | 10 | 5/16 | 1/4 |
| 185-4X | 3/16 | 1/4 | 3/8 | - |

Phillips Bits



| Part No. | Point Size | Screw Size |
|----------|------------|------------|
| 446-0X | 0 | 0,1 |
| 446-1X | 1 | 2,3,4 |
| 446-2X | 2 | 5,6,7,8,10 |
| 440-3X | 3 | 12,14 |

Screwdriver Bits



| Part No. | Blade Width | Blade Thickness | Screw Size |
|----------|-------------|-----------------|------------|
| 445-00X | .134 | .028 | 2,3 |
| 445-0X | .155 | .030 | 3,4 |
| 445-10X | .185 | .034 | 4,5 |
| 445-20X | .214 | .036 | 5,6 |
| 445-30X | .250 | .040 | 6,8 |

Kit No. KT-100

Range 20-100 in.-oz. 20 piece

| Qty. | Description |
|------|--|
| 1 | Adj. torque screwdriver 1/4" fm. hex |
| 1 | Torque screwdriver bld. .000 |
| 1 | Torque screwdriver bld. .100 |
| 1 | Hex socket 3/32" |
| 1 | Hex socket 7/64" |
| 1 | Hex key .028 |
| 1 | Hex key .035 |
| 1 | Screwdriver hex bit .050 |
| 1 | Screwdriver hex bit 1/16" |
| 1 | Screwdriver hex bit 5/64" |
| 1 | Screwdriver bld. torque screw SZ. 2, 3 |
| 1 | Screwdriver bld. torque screw SZ. 4, 5 |
| 1 | Phillips bld. torque screw SZ. 0, 1 |
| 1 | Phillips bld. torque screw SZ. 2, 3, 4 |
| 1 | Adapter 1/4" drive |
| 1 | Bit holder mini. torque |
| 1 | 1/4" Dr. reg. socket 1/8" |
| 1 | 1/4" Dr. reg. socket 3/16" |
| 1 | Plas/case |
| 1 | Insert |

Kit No. KT-30

Range 6 to 30 in.-lb. 24 piece

| Qty. | Description |
|------|--|
| 1 | Adj. torque screwdriver 1/4" fm. hex |
| 1 | Torque screwdriver bld. .100 |
| 1 | Hex socket 7/64" |
| 1 | Hex key .035 |
| 1 | Screwdriver hex bit .050 |
| 1 | Screwdriver hex bit 1/16" |
| 1 | Screwdriver hex bit 5/64" |
| 1 | Screwdriver hex bit 3/32" |
| 1 | Screwdriver hex bit 1/8" |
| 1 | Screwdriver hex bit 5/32" |
| 1 | Screwdriver bld. torque screw SZ. 2, 3 |
| 1 | Screwdriver bld. torque screw SZ. 4, 5 |
| 1 | Screwdriver bld. torque screw SZ. 5, 6 |
| 1 | Screwdriver bld. torque screw SZ. 6, 8 |
| 1 | Phillips bld. torque screw SZ. 0, 1 |
| 1 | Phillips bld. torque screw SZ. 2, 3, 4 |
| 1 | Adapter 1/4" drive |
| 1 | Bit holder mini. torque |
| 1 | 1/4" Dr. reg. socket 1/8" |
| 1 | 1/4" Dr. reg. socket 3/16" |
| 1 | 1/4" Dr. reg. socket 1/4" |
| 1 | 1/4" Dr. reg. socket 5/16" |
| 1 | Plas/case |
| 1 | Insert |

Square Drive Adapter



| Part No. | Description |
|----------|------------------------|
| 44-71-B | 1/4 Hex to 1/4 Square. |

Bit Holders



| Part No. | Square Drive (in.) | Female Hex (in.) | |
|----------|--------------------|------------------|----------|
| 825 | 1/4 | 1/4 | |
| M-825 | 1/4 | 1/4 | Magnetic |

SAE Size Sockets



| Part No. | Square Dr. (in.) | Hex Opening (in.) | Part No. | Square Dr. (in.) | Hex Opening (mm) |
|----------|------------------|-------------------|----------|------------------|------------------|
| 1108 | 1/4 | 1/4 | 6mm11 | 1/4 | 6mm |
| 1110 | 1/4 | 5/16 | 7mm11 | 1/4 | 7mm |
| 1112 | 1/4 | 3/8 | 8mm11 | 1/4 | 8mm |
| 1114 | 1/4 | 7/16 | 10mm11 | 1/4 | 10mm |

Metric Size Sockets

Miniature Bit Holders



| Part No. | Description |
|----------|---|
| HW-19 | To adapt miniature accessories for use in standard models. See page 11 for accessories. |

Kit No. KT-130

Range 20 in.-oz. to 30 in.-lb. 43 piece

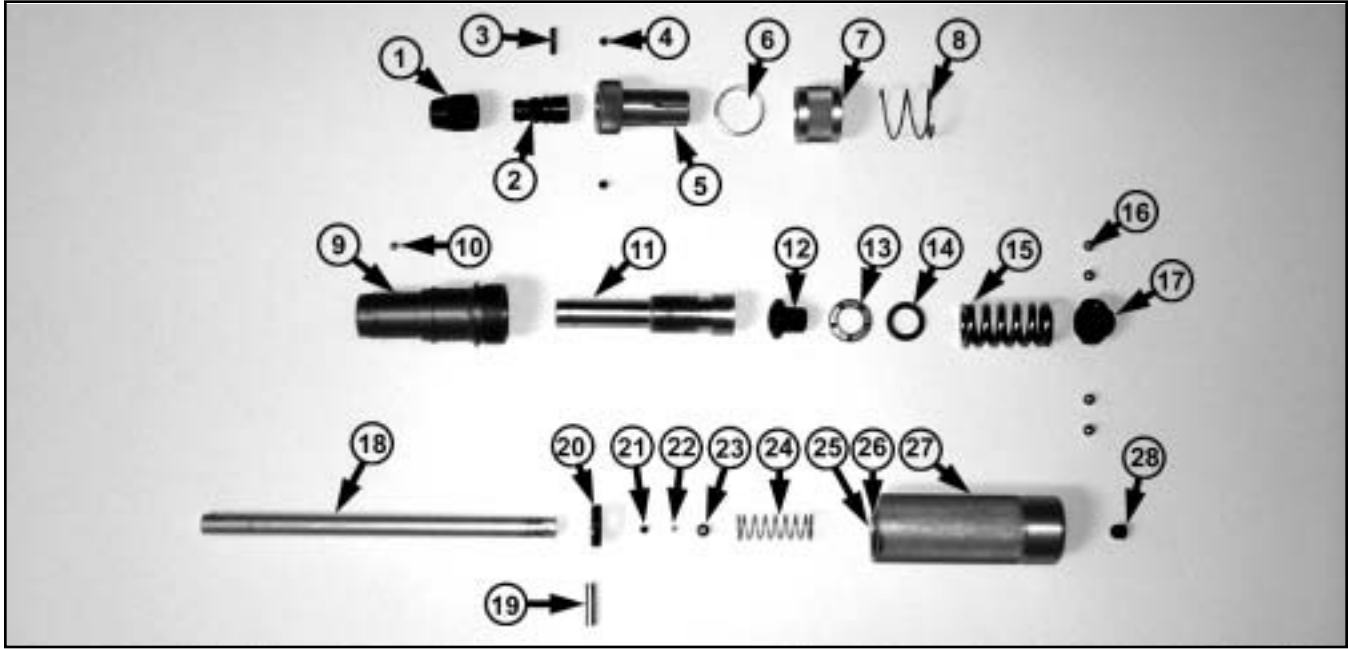
| Qty. | Description |
|------|---|
| 1 | Adj. torque screwdriver 1/4" fm. hex |
| 1 | Adj. torque screwdriver 1/4" fm. hex |
| 1 | Torque screwdriver bld. .080 |
| 2 | Torque screwdriver bld. .100 |
| 1 | Hex socket 3/32" |
| 2 | Hex socket 7/64" |
| 1 | Hex key .028 |
| 2 | Hex key .035 |
| 2 | Screwdriver hex bit .050 |
| 2 | Screwdriver hex bit 1/16" |
| 2 | Screwdriver hex bit 5/64" |
| 1 | Screwdriver hex bit 3/32" |
| 1 | Screwdriver hex bit 1/8" |
| 1 | Screwdriver hex bit 5/32" |
| 2 | Screwdriver bld. torque screw SZ. 2, 3 |
| 2 | Screwdriver bld. torque screw SZ. 4, 5 |
| 1 | Screwdriver bld. torque screw SZ. 5, 6 |
| 1 | Screwdriver bld. torque screw SZ. 6, 8 |
| 2 | Phillips bld. torque screw SZ. 0, 1 |
| 2 | Phillips bld. torque screw SZ. 2, 3, 4 |
| 1 | Phillips bld. torque screw SZ. 4, 6, 7, 8, 10 |
| 2 | Adapter 1/4" drive |
| 2 | Bit holder mini. torque |
| 1 | 1/4" Dr. reg. socket 1/8" |
| 1 | 1/4" Dr. reg. socket 5/32" |
| 2 | 1/4" Dr. reg. socket 3/16" |
| 1 | 1/4" Dr. reg. socket 1/4" |
| 1 | 1/4" Dr. reg. socket 5/16" |
| 1 | Plas/case |
| 1 | Insert |



CAUTION: 1. Under normal use, periodic recalibration may be necessary to ensure accurate readings and applied torque.
2. FOR EXTENDED SPRING LIFE, RETURN TO LOWEST SETTING AFTER EACH USE.



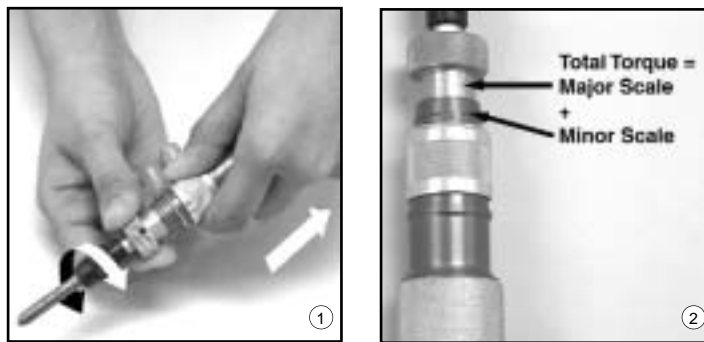
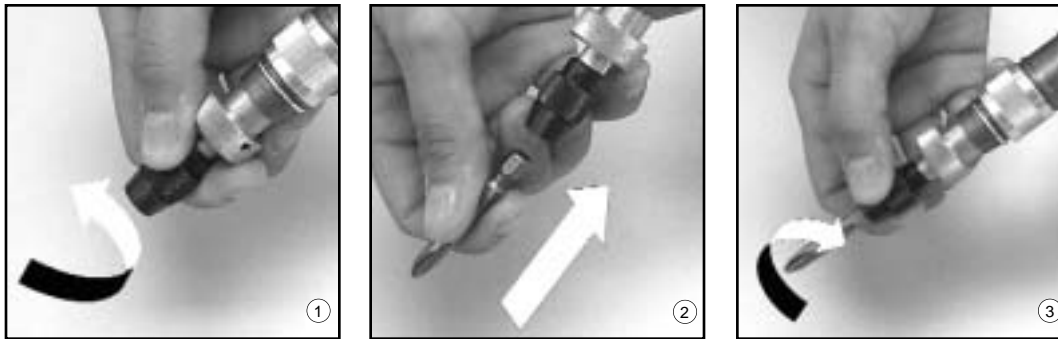
IMPORTANT: Unauthorized repair of this product may void warranty (all parts may not be servicable).



Service Repair Parts for TS-30, TS-30CM, TS-35, and TS-100 Adjustable Torque Screwdrivers

| Index | Description | TS-30 | TS-30CM | TS-35 | TS-100 | |
|-------|------------------------|------------|------------|------------|------------|---|
| 1 | Outer Bit Holder | 8502871095 | 8502871095 | 8502871095 | 8502871095 | 1 |
| 2 | Inner Bit Holder | 8502871094 | 8502871094 | 8502871094 | 8502871094 | 1 |
| 3 | Spirol Pin | 4502870142 | 4502870142 | 4502870142 | 4502870142 | 1 |
| 4 | #6-32 Set Screw | 4502870135 | 4502870135 | 4502870135 | 4502870135 | 2 |
| 5 | Sleeve | 8502870118 | 8502870187 | 8502870112 | 8502870119 | 1 |
| 6 | Snap Ring | 4502870137 | 4502870137 | 4502870137 | 4502870137 | 1 |
| 7 | Lock Collar | 8502870105 | 8502870105 | 8502870105 | 8502870105 | 1 |
| 8 | Lock Collar Spring | 4502870138 | 4502870138 | 4502870138 | 4502870138 | 1 |
| 9 | Front Barrel | 8502870116 | 8502870188 | 8502870115 | 8502870117 | 1 |
| 10 | Steel Ball | 4502840356 | 4502840356 | 4502840356 | 4502840356 | 1 |
| 11 | Adjusting Plug | 8602870184 | 8602870184 | 8602870184 | 8602870184 | 1 |
| 12 | Spacer | 8502870109 | 8502870109 | 8502870109 | 8502870109 | 1 |
| 13 | Thrust Bearing | 4502870113 | 4502870113 | 4502870113 | 4502870113 | 1 |
| 14 | Thrust Washer | 8502870108 | 8502870108 | 8502870108 | 8502870108 | 1 |
| 15 | Torque Spring | 4502870145 | 4502870145 | 4502870145 | 4502870140 | 1 |
| 16 | Steel Ball | 4502870143 | 4502870143 | 4502870143 | 4502870143 | 4 |
| 17 | Cam | 8502870101 | 8502870101 | 8502870101 | 8502870101 | 1 |
| 18 | Adjusting Shaft | 8502870129 | 8502870129 | 8502870129 | 8502870129 | 1 |
| 19 | Roller Pin | 4502870103 | 4502870103 | 4502870103 | 4502870103 | 1 |
| 20 | Shaft Retainer | 8502870127 | 8502870127 | 8502870127 | 8502870127 | 1 |
| 21 | #6-32 X 1/8" Set Screw | 4502840376 | 4502840376 | 4502840376 | 4502840376 | 1 |
| 22 | 3/32" Steel Ball | 4502840377 | 4502840377 | 4502840377 | 4502840377 | 1 |
| 23 | Steel Ball | 4502870144 | 4502870144 | 4502870144 | 4502870144 | 1 |
| 24 | Compression Spring | 4502870141 | 4502870141 | 4502870141 | 4502870141 | 1 |
| 25 | Cam Insert | 8502870106 | 8502870106 | 8502870106 | 8502870106 | 1 |
| 26 | Spacer | 8502870102 | 8502870102 | 8502870102 | 8502870102 | 1 |
| 27 | Handle | 8502870107 | 8502870107 | 8502870107 | 8502870107 | 1 |
| 28 | Set Screw | 4502840359 | 4502840359 | 4502840359 | 4502840359 | 1 |

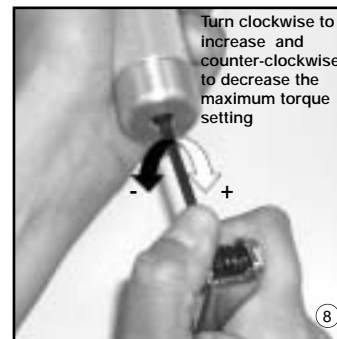
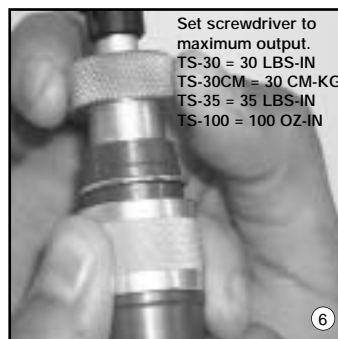
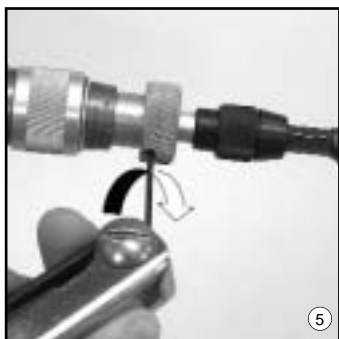
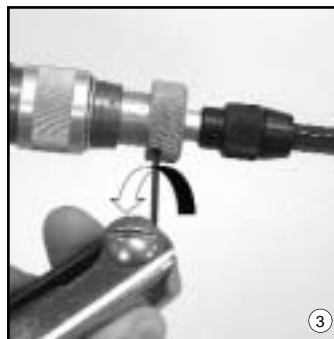
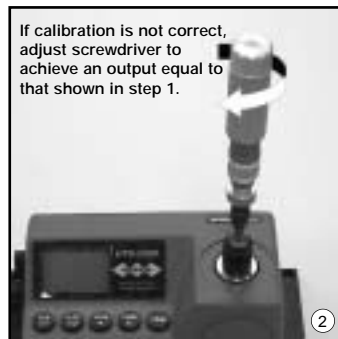
Inserting and Removing Bits



Recalibration of the Utica



Proper Calibration equipment is required to ensure accuracy!



For torque certification return to your nearest sales and service center