

Collet chucks, type ER sealed, according to DIN 6499 A/ISO 15488

Can be used up to 60 bar, concentricity < 2 µm

ATORN[®]

Application

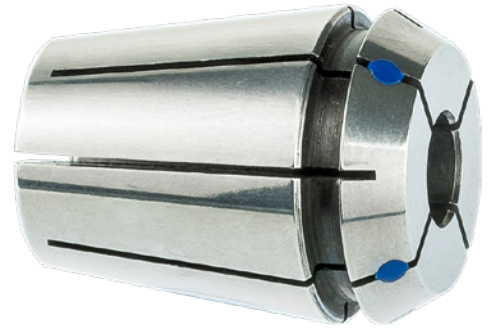
For use on precision collet chucks

Version

- Seal for internal coolant feed (up to 60 bar)

Advantage

- Higher degree of concentricity extends service life of tool



Art. No.	23388 488
Collet type	ER 16
Clamping diameter	9.5 mm
Outer diameter	17 mm
Length	27.5 mm

EAN-Code

4050293676143