

## Collet chucks type ER metal-sealed, according to DIN 6499 A/ISO 15488

Can be used up to 120 bar, concentricity < 5 µm

**ATORN**<sup>®</sup>

### Application

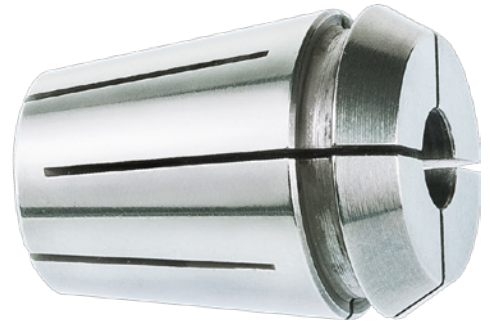
For use on precision collet chucks

### Version

- Metal sealed up to 120 bar for internal coolant supply

### Advantage

- Higher degree of concentricity extends service life of tool



<b>Art. no.</b>	<b>23388 805</b>
<b>Collet type</b>	ER 40
<b>Clamping diameter</b>	23 mm
<b>Outer diameter</b>	41 mm
<b>Length</b>	46 mm

### EAN-Code

4050293679090