



CorePro LED PLT 4P



CorePro LED PLT HF 9W 840 4P GX24q-3

The CorePro LED PLT 4P integrates a LED light source into a traditional fluorescent form factor. This product is the ideal solution for uplampping in general lighting applications: it meets basic lighting requirements, offers significant energy savings, and is environmentally friendly

Product data

| General Information | |
|---------------------------------------|--------------------|
| Cap-Base | GX24Q-3 [GX24q-3] |
| Nominal lifetime | 30,000 hour(s) |
| Switching Cycle | 200,000 |
| Lighting Technology | LED |
| Flux measurement reference | Sphere |
| Light Technical | |
| Color Code | 840 [CCT of 4000K] |
| Beam Angle (Nom) | 120 degree(s) |
| Luminous Flux | 1,100 lumen |
| Color Designation | Cool White (CW) |
| Correlated Color Temperature (Nom) | 4000 K |
| Luminous Efficacy (rated) (Nom) | 122 lm/W |
| Color Consistency | <6 |
| Color rendering index (CRI) | 82 |
| LLMF At End Of Nominal Lifetime (Nom) | 70 % |
| Operating and Electrical | |
| Line Frequency | 20K-80K Hz |
| Input Frequency | 20K-80K Hz |
| Power Consumption | 9 W |
| Starting Time (Nom) | 0.5 s |

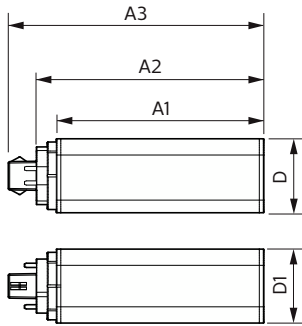
| Warm-up time to 60% light | 0.5 s |
|-------------------------------|--|
| Power Factor (Fraction) | 0.9 |
| Voltage (Nom) | 20-60 V |
| Temperature | |
| Ambient temperature range | -20 °C to 35 °C |
| T-Case Maximum (Nom) | 65 °C |
| Controls and Dimming | |
| Dimmable | No |
| Mechanical and Housing | |
| Bulb Finish | Frosted |
| Bulb Material | Plastic |
| Product Length | 100 mm |
| Bulb Shape | Tube, single-ended |
| Approval and Application | |
| Energy Efficiency Class | E |
| Energy Saving Product | Yes |
| Approval Marks | RoHS compliance TUV CE marking KEMA Keur certificate |
| Energy Consumption kWh/1000 h | 9 kWh |

CorePro LED PLT 4P

| | |
|---------------------------|--------------------------------------|
| EPREL Registration Number | 1361423 |
| CE mark | Yes |
| EU RoHS compliant | Yes |
| Product Data | |
| Full product code | 871951448782600 |
| Order product name | CorePro LED PLT HF 9W 840 4P GX24q-3 |
| Order code | 929003576602 |

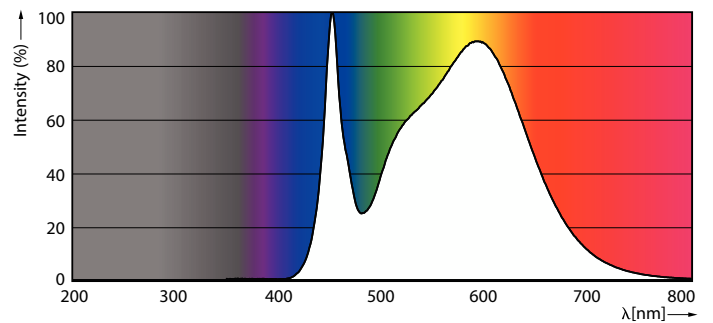
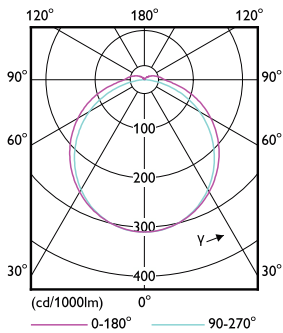
| | |
|---------------------------------|--------------------------------------|
| Numerator - Quantity Per Pack | 1 |
| Numerator - Packs per outer box | 20 |
| Material number (12NC) | 929003576602 |
| Full product name | CorePro LED PLT HF 9W 840 4P GX24q-3 |
| EAN/UPC - Case | 8719514487833 |

Dimensional drawing



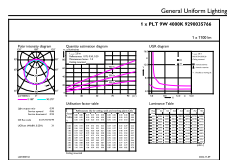
| Product | D1 | D2 | A1 | A2 | A3 |
|--------------------------------------|-------|----|--------|--------|--------|
| CorePro LED PLT HF 9W 840 4P GX24q-3 | 42 mm | | 115 mm | 127 mm | 142 mm |

Photometric data



Light Distribution Diagram

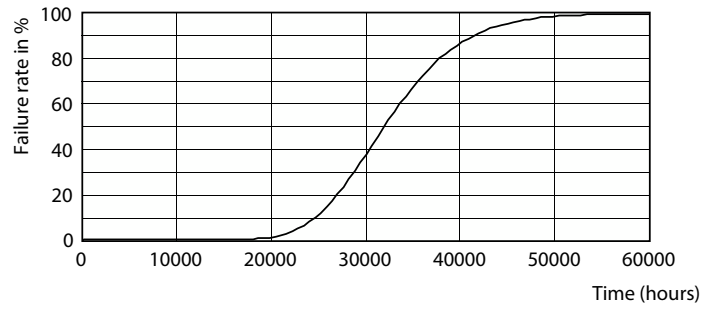
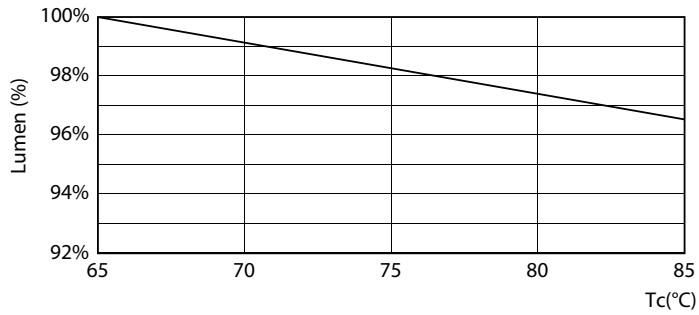
Spectral Power Distribution Colour



General uniform lighting - CorePro LED PLT HF 9W 840 4P GX24q-3

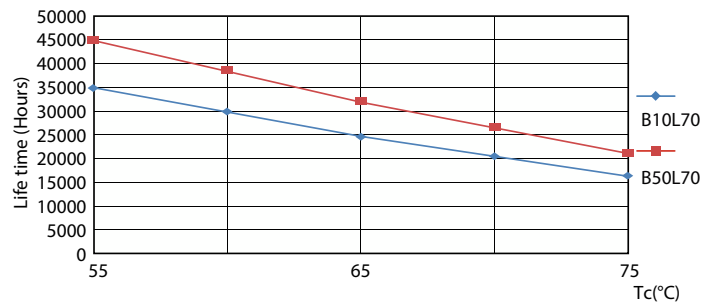
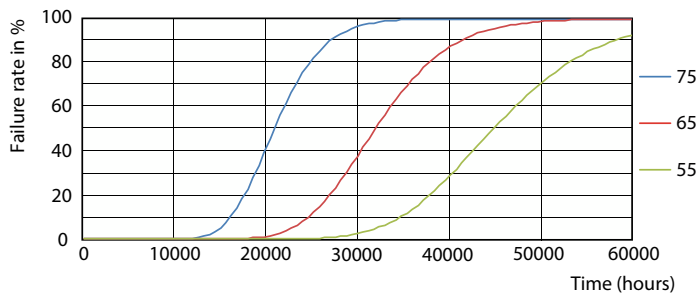
CorePro LED PLT 4P

Lifetime



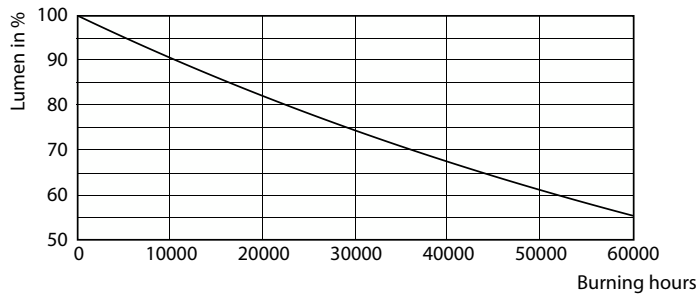
Lumen Maintenance Diagram

Life Expectancy Diagram - CorePro LED PLT HF 9W 840 4P GX24q-3



Life Expectancy Diagram

Life Expectancy Diagram



Lumen Maintenance Diagram - CorePro LED PLT HF 9W 840 4P GX24q-3

CorePro LED PLT 4P

