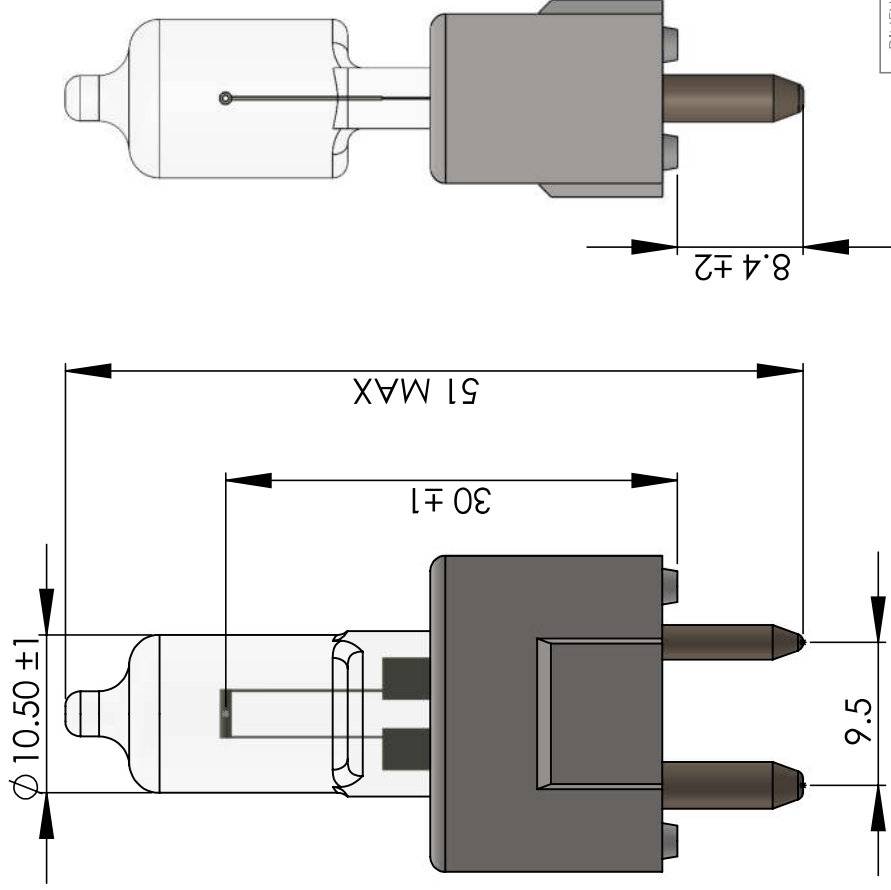
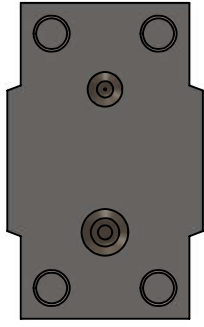


PRELIMINARY

REVISIONS

REV	DESCRIPTION	DATE	APPROVED
1	Initial Release	1/3/2022	MT



Specifications:

Bulb:	T10
Base:	GY9.5
Filament Type:	C-6
Design Volts:	12 V
Design Watts:	20 W ± 15%
Total Flux:	300 Lm ± 15%
Efficiency:	15 Lm/W
Average Life:	2000 hrs
Axial Alignment	1.5mm MAX
Tolerance Front:	
Axial Alignment	1.5mm MAX
Tolerance Side:	

Description:
HALOGEN LAMP 12V 20W



10 Technology Drive
Peabody MA 01960
+1-978-818-6180
www.intl-lighttech.com

InternationalLight
TECHNOLOGIES

TITLE:

L9404B

DIMENSIONS ARE IN MM:

DRAWN	CHECKED	NAME	DATE
		M. Teixeira	1/3/2022

COMMENTS:

MATERIAL
FINISH

DO NOT SCALE DRAWING

PROPRIETARY AND CONFIDENTIAL
THE INFORMATION CONTAINED IN THIS
DRAWING IS THE SOLE PROPERTY OF
INTERNATIONAL LIGHT TECHNOLOGIES.
ANY REPRODUCTION IN PART OR AS A
WHOLE WITHOUT THE WRITTEN PERMISSION
OF INTERNATIONAL LIGHT TECHNOLOGIES
IS PROHIBITED.

SIZE	DWG. NO.	REV.
A	30974P1	
SCALE:	N/A	WEIGHT: