



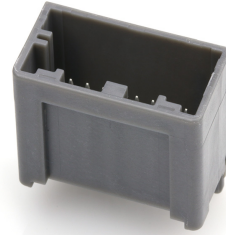
Part Number : [348250126](#)

Product Description : Mini50 Unsealed Vertical Header, Dual Row, 12 Circuit, Polarization Option C, Dark Gray, Tray

Series Number : 34825

Status : Active

Product Category : PCB Headers and Receptacles



Documents & Resources

Drawings

[Drawing 348250126_sd.pdf](#)

[Packaging Design Drawing PK-31301-440-001.pdf](#)

3D Models and Design Files

[3D Model 348250126_stp.zip](#)

Specifications

[Application Specification AS-34791-020-CH-001.pdf](#)


[Application Specification AS-34791-020-001.pdf](#)

[Product Specification PS-34791-020-001.pdf](#)

[Test Summary 347910020-TS-000.pdf](#)

Product Environment Compliance

Compliance

GADSL/IMDS	Compliant with Exemption 44; 33
China RoHS	
EU ELV	Compliant per 2000/53/EC
Low-Halogen Status	Low-Halogen per IEC 61249-2-21
REACH SVHC	Not Contained per D(2023)3788-DC (14 Jun 2023)
EU RoHS	Compliant per EU 2015/863

Multiple Part Product Compliance Statements

- Eu RoHS
- REACH SVHC
- Low-Halogen

Multiple Part Industry Compliance Documents

- IPC 1752A Class C
- IPC 1752A Class D
- Molex Product Compliance Declaration
- IEC-62474
- chemSHERPA (xml)

EU RoHS Certificate of Compliance

Part Details

General

Status	Active
Category	PCB Headers and Receptacles
Series	34825
Description	Mini50 Unsealed Vertical Header, Dual Row, 12 Circuit, Polarization Option C, Dark Gray, Tray
Application	Automotive, Power, Signal, Wire-to-Board
Component Type	PCB Header
Product Family	Mini50 Connection Systems
Product Name	Mini50
UPC	887191338682

Electrical

Current - Maximum per Contact	4.0A (for reference only)
Voltage - Maximum	14V (typical operating)

Physical

Breakaway	No
Circuits (Loaded)	12
Circuits (maximum)	12
Color - Resin	Gray (Dark)
Durability (mating cycles max)	10
First Mate / Last Break	No
Glow-Wire Capable	No
Guide to Mating Part	No
Keying to Mating Part	Yes

Lock to Mating Part	Yes
Material - Metal	Brass
Material - Plating Mating	Tin
Material - Plating Termination	Tin
Material - Resin	High Temperature Thermoplastic
Net Weight	2.068/g
Number of Rows	2
Orientation	Vertical
Packaging Type	Tray
PC Tail Length	2.87mm
PCB Locator	Yes
Pitch - Mating Interface	2.00mm
Plating min - Mating	2.500µm
Plating min - Termination	2.500µm
Polarized to Mating Part	Yes
Polarized to PCB	Yes
Temperature Range - Operating	-40° to +105°C
Termination Interface Style	Through Hole

Solder Process Data

Lead-Free Process Capability	N/A
------------------------------	-----

Mates With / Use With

Mates with Part(s)

Description	Part Number
Mini50 Unsealed Dual Row Receptacle Housings	<u>34824</u>