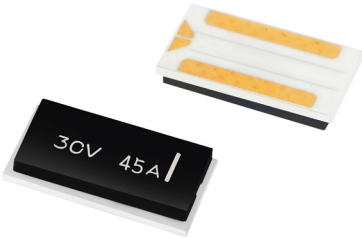


SMD Fuses 9550, 30A

multicomp **PRO**

RoHS
Compliant



Description

This Series is a surface mountable battery protector designed to protect against both over current and overcharging. Fuse can cut off the circuit when over current occurs. Also, combining with IC and FET, the embedded heater can generate heat to blow the fuse element to achieve over voltage protection.

Application

- Moped
- Lawn mower
- Energy storage batteries
- Vacuum cleaner
- Electric scooters
- Electric bicycles
- BMS
- Robot

Features

- Protect Li-ion battery from over current and overcharge
- Substrate embedded Resistor
- Surface mounted fuse
- Halogen free / Sb free
- Fast response time

Specification Table

Part Number	Applicable cells in series	Rated Current (A)	Rated Voltage (V DC)	Breaking Capacity (A)	Fuse Resistance (mΩ)	Operating Voltage (V)	Heater Resistance (Ω)
MCATF955006V30A	1 cells	30	80	80	0.5 - 2.5	4 ~ 6.6	0.8 ~ 1.2
MCATF955012V30A	3 cells					8.4 ~ 13.8	3.2 ~ 5.2
MCATF955018V30A	4 cells					11.1 ~ 18.4	6.3 ~ 9.3
MCATF955030V30A	6-7 cells					20.2 ~ 31.5	18.8 ~ 31.2
MCATF955040V30A	9-10 cells					28 ~ 46.9	40 ~ 60.0
MCATF955050V30A	15 cells					42 ~ 67.5	83 ~ 135.6

Electrical Characteristics

Items	Conditions	Requirements / Result
Current carrying capacity	Apply 100% of its rated current.	No melting.
Fusing time	Apply 200% of its rated current.	The fuse shall be melt within 1min.
	The minimum value of the operating voltage range of each model shall be applied to heater.	
Operating temperature range	The following examinations are executed respectively within the range from -10 to 65°C. <ul style="list-style-type: none"> • Fusing time test • Current carrying capacity test 	The fuse shall be passed each test.

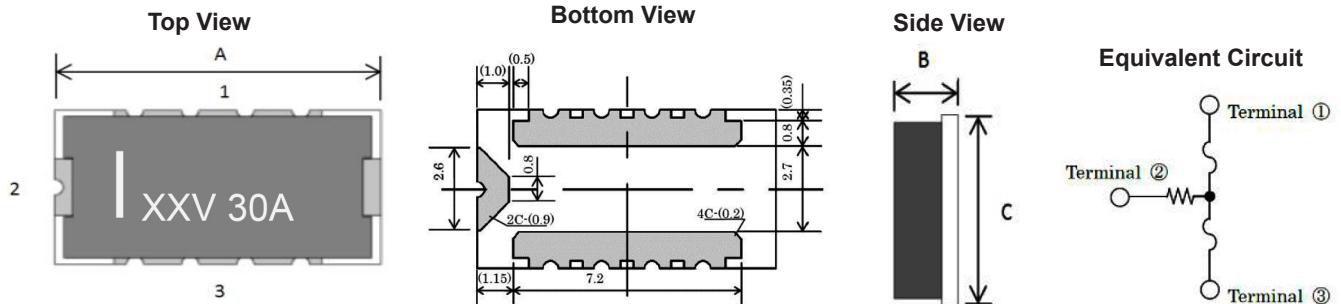
*Electrical characteristics are influenced by thermal capacity of PCB, parts, pattern width, etc. Therefore you should check them on your PCB.

Newark.com/multicomp-pro
Farnell.com/multicomp-pro
sg.element14.com/b/multicomp-pro

multicomp **PRO**

SMD Fuses 9550, 30A

Diagram

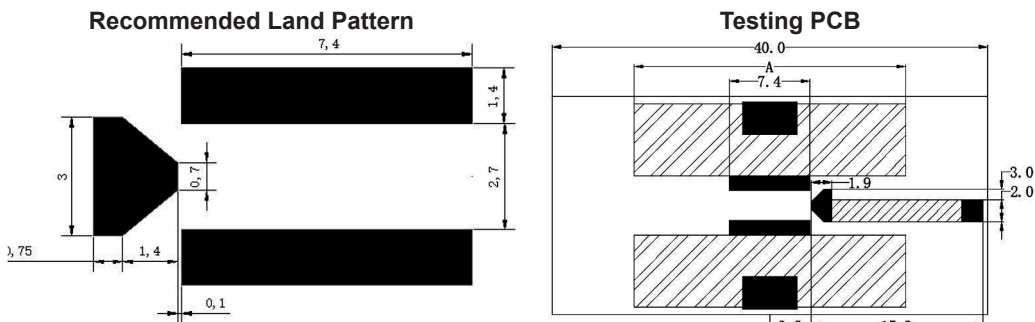


Dimension

Code	Spec.(mm)
A	9.5 ±0.5
B	2 Max.
C	5 ±0.5

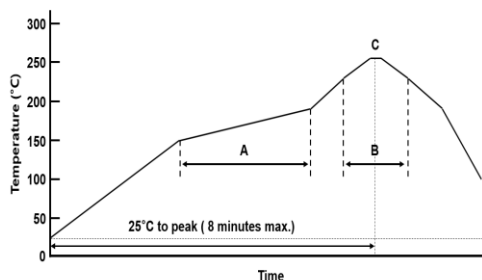
*Without extra notification the tolerance is ± 0.1mm

Recommended Solder Land Pattern and PCB



Materials	Width (A)	Thickness	Copper Thickness	Wires
FR-4	6mm	0.6mm	2.0 OZ	AWG10

Reflow Profile Recommended

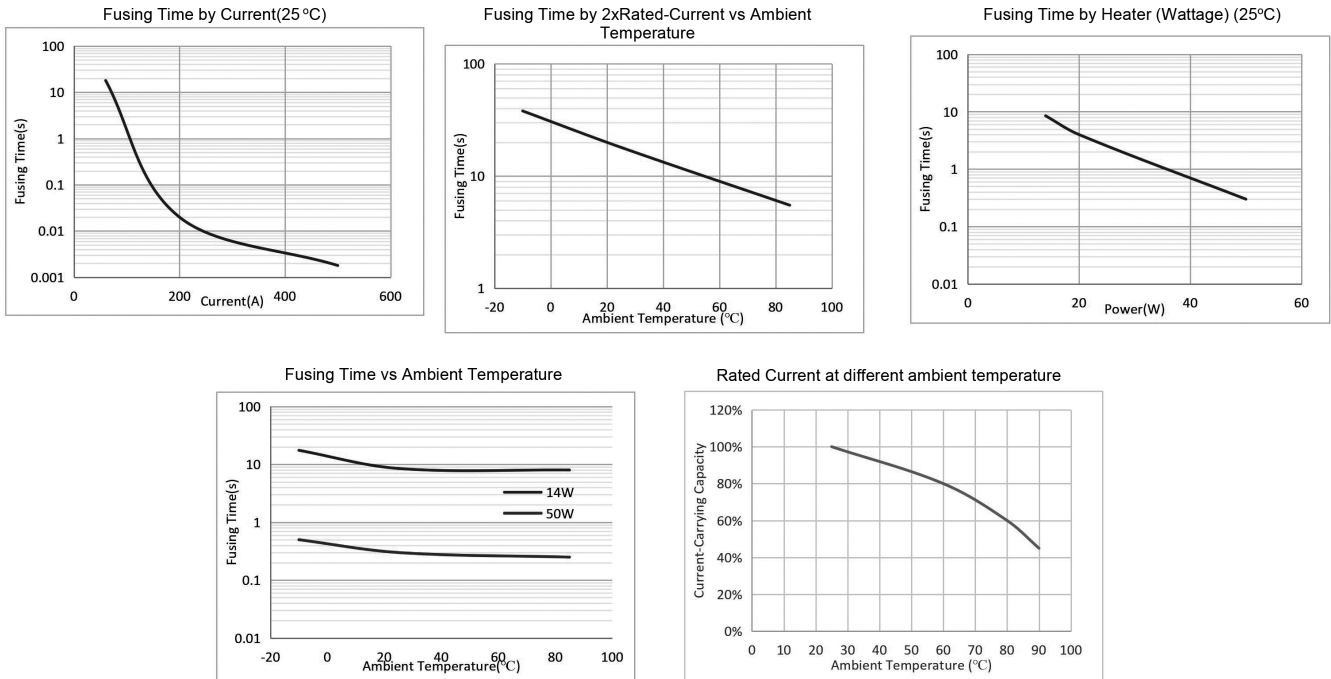


Code	Temperature (°C)	Time (s)
A (Pre-Heating)	150~190	90 ±30
B (Heating)	Over 230	25 ±5
C (Peak)	255 ± 5	Max. 5

Dimensions : Millimetres

SMD Fuses 9550, 30A

Typical Performance Data (Ambient Temperature: 25°C)



Part Number Table

Description	Part Number
SMD Fuse, 9550 Series, 30A, 6V	MCATF955006V30A
SMD Fuse, 9550 Series, 30A, 12V	MCATF955012V30A
SMD Fuse, 9550 Series, 30A, 18V	MCATF955018V30A
SMD Fuse, 9550 Series, 30A, 30V	MCATF955030V30A
SMD Fuse, 9550 Series, 30A, 40V	MCATF955040V30A
SMD Fuse, 9550 Series, 30A, 50V	MCATF955050V30A

Important Notice : This data sheet and its contents (the "Information") belong to the members of the AVNET group of companies (the "Group") or are licensed to it. No licence is granted for the use of it other than for information purposes in connection with the products to which it relates. No licence of any intellectual property rights is granted. The Information is subject to change without notice and replaces all data sheets previously supplied. The Information supplied is believed to be accurate but the Group assumes no responsibility for its accuracy or completeness, any error in or omission from it or for any use made of it. Users of this data sheet should check for themselves the Information and the suitability of the products for their purpose and not make any assumptions based on information included or omitted. Liability for loss or damage resulting from any reliance on the Information or use of it (including liability resulting from negligence or where the Group was aware of the possibility of such loss or damage arising) is excluded. This will not operate to limit or restrict the Group's liability for death or personal injury resulting from its negligence. Multicomp Pro is the registered trademark of Premier Farnell Limited 2019.