

SERIES 1800 - SINGLE POLE AND DOUBLE POLE ROCKER SWITCHES

UP TO 12 (4) A 250 V~ AND 8 (8) A 250 V~



PRODUCT ADVANTAGES

- ◆ Switching principle with long life endurance due to a low friction contact system (ball), proven a 100 million times
- ◆ Attractive rocker switches with silk matt surfaces and abrasionproof markings
- ◆ High ratings up to 12 (4) A 250 V ~ resp. 8 (8) A 250 V~ and inrush current peaks up to 70A
- ◆ Suitable for ambient temperatures up to T 100/55
- ◆ High accuracy of fit between rocker and housing
- ◆ Excellent actuation characteristic
- ◆ Simple snap-on assembly for appliance panel thickness of 0.75 ... 3.00 mm
- ◆ Tight fit in appliance cut-out due to tolerance compensation ribs on the switch housing
- ◆ Staked terminals for reliable plugging of connectors

SWITCHING FUNCTIONS

- ◆ Single throw (ST) switches
- ◆ ST- switches with indicator lamp
- ◆ Double throw (DT) switches
- ◆ Double throw switches with centre-OFF
- ◆ Switches with momentary function
- ◆ Pilot lights

TERMINAL VERSIONS

- ◆ Quick-connect terminal 4.8 mm
- ◆ Solder terminal
- ◆ Straight PCB terminal
- ◆ Angled PCB-terminal

VERSIONS ON REQUEST

- ◆ With flammability according to UL 94 V-0
- ◆ With gold-plated contacts for low voltages
- ◆ With cutting contacts for applications in a dusty environment
- ◆ With additional supports for PCB assembly
- ◆ With special rocker for snapping on customized actuators

ACCESSORIES

- ◆ Protection caps against dust and splash water (see page 2.48)

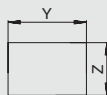
STANDARD VERSIONS



APPLIANCE CUT-OUT

single pole

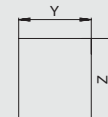
X = panel thickness



X	Y	Z
0.75...1.25	19.2 ^{-0.1}	12.9 ^{+0.1}
1.25...2	19.4 ^{-0.1}	12.9 ^{+0.1}
2 ...3	19.8 ^{-0.1}	12.9 ^{+0.1}

double pole

X = panel thickness



X	Y	Z
0.75...1.25	19.2 ^{-0.1}	21.9 ^{+0.1}
1.25...2	19.4 ^{-0.1}	21.9 ^{+0.1}
2 ...3	19.8 ^{-0.1}	21.9 ^{+0.1}

Electrical rating (depending on version)	8 (8) A 250 V~ 5E4 12 (4) A 250 V~ 15 A 125 - 250 V AC 3/4 HP 125 V AC 1 1/2 HP 250 V AC
Inrush current ST-switches	70 A capacitive 10 ⁴ operations
Mechanical life endurance ST / DT DT with centre-OFF	5E4 5E4
Contact resistance (new state)	< 100 mΩ (12 V, 1 A DC)
Insulation resistance (new state)	> 100 MΩ (500 V DC between the open contacts)
High voltage resistance (new state)	< 3 mm 750 V eff. (between the open contacts) ≥ 3 mm 1250 V eff. (between the open contacts) 3750 V eff. (reinforced insulation)
Resistance to tracking	PTI 250
Contact gap	ST / DT ≥ 3 mm DT with centre-OFF < 3 mm (μ)
Insulation spacing	≥ 8 mm
Protection type	IP 40
Ambient temperature	-20 °C ... +100 °C (no condensation)
Terminal side	-20 °C ... + 55 °C (no condensation)
Actuating side	-20 °C ... + 55 °C (no condensation)
Storage temperature	-40 °C ... + 80 °C
Actuating force	3-8 N (depending on the switching function)
Flammability	UL 94 V-2
Heat and fire resistant	850 °C (category D)
Material housing and rocker	PA
rocker illuminated	PC
Contacts	Ag
Terminals	silver-plated
Temperature rise at the terminals (according to electrical life endurance)	max. 30 K (UL 1054) max. 55 K (EN 61058-1)
Solderability of terminals	max. 350 °C, 3 sec. (no pressure when soldering by hand!)
Push-on force of connectors	≤ 80 N
Approval marks	or
Suitable for appliances of protection class II	

SERIES 1800 - SINGLE POLE AND DOUBLE POLE ROCKER SWITCHES

UP TO 12 (4) A 250 V~ AND 8 (8) A 250 V~

SINGLE POLE ST-SWITCHES

with indicator lamp

10 (4) A 250 V~
 6 (4) A 250 V~ 5E4
 5/50 A 250 V~
 T 100/55
 6 A (1/2 HP) 250 V AC

ST-switches for 125 V AC on request



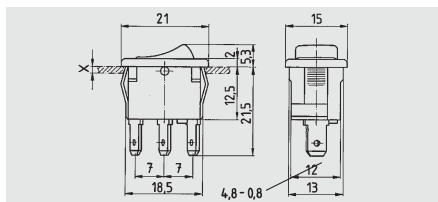
1800.1102*
 1800.0102



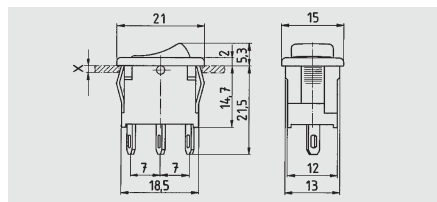
1800.1108*
 1800.0108



1800.1104*



quick-connect terminal 4.8



solder terminal

DOUBLE POLE ST-SWITCHES

with indicator lamp

10 (4) A 250 V~
 6 (4) A 250 V~ 5E4
 5/50 A 250 V~
 T 100/55
 6 A (1/2 HP) 250 V AC

ST-switches with indicator lamp for
 12 (4) A 250 V~ resp. 8 (8) A 250 V~,
 for 125 V AC and for 125 V - 250 V AC
 on request



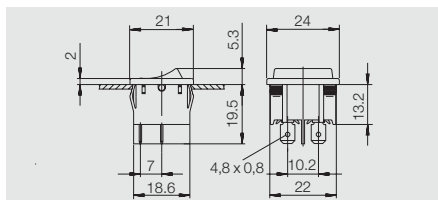
1805.7110*
 1805.6102



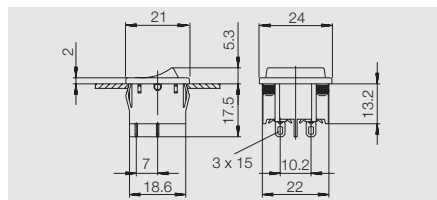
1805.7104*



1805.7109*
 1805.6108



quick-connect terminal 4.8



solder terminal

SINGLE POLE COMBINATION

10 (4) A 250 V~
 6 (4) A 250 V~ 5E4
 T 100/55

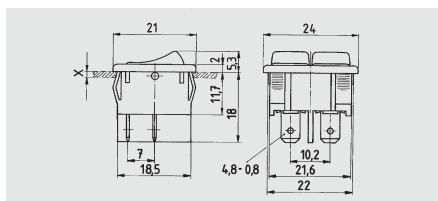
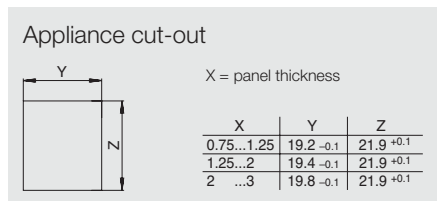
Additional switching functions on request



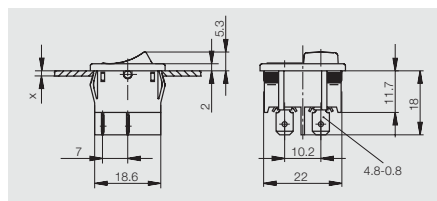
ST-switch / ST-switch
 1806.1102*



ST-switch / Pilot light
 1806.1402



quick-connect terminal 4.8



quick-connect terminal 4.8

SINGLE POLE ST-SWITCHES

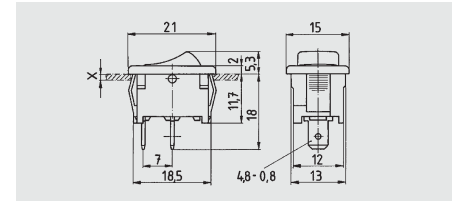
12 (4) A 250 V~
 8 (8) A 250 V~ 5E4
 5/70 A 250 V~
 T 100/55
 15 A (3/4 HP) 125 V AC
 15 A (1 1/2 HP) 250 V AC



1801.1121*
 1801.0121*



1801.1908*
 1801.0136*



quick-connect terminal 4.8

10 (4) A 250 V~
 6 (4) A 250 V~ 5E4
 5/50 A 250 V~
 T 100/55
 6 A (1/4 HP) 125 V AC
 6 A (1/2 HP) 250 V AC



1801.1101
 1801.6101



1801.1102*
 1801.6102*
 1801.5102



1801.1119*
 1801.6112



1801.1146*
 1801.6115*
 1801.2106



1801.1139*
 1801.0179



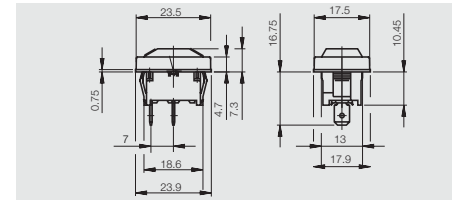
1801.1903

SINGLE POLE ST-SWITCHES

with installed dust protection cap
 10 (4) A 250 V~
 6 (4) A 250 V~ 5E4
 5/50 A 250 V~
 T 100/55
 6 A (1/4 HP) 125 V AC
 6 A (1/2 HP) 250 V AC



1801.1403*



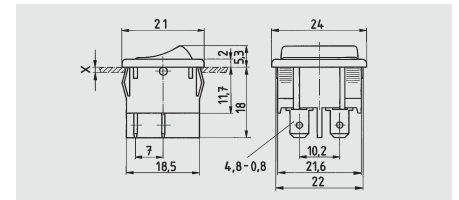
quick-connect terminal 4.8

DOUBLE POLE ST-SWITCHES

12 (4) A 250 V~
 8 (8) A 250 V~ 5E4
 5/70 A 250 V~
 T 100/55
 15 A (3/4 HP) 125 V AC
 15 A (1 1/2 HP) 250 V AC



1802.1123*
 1802.0130*



quick-connect terminal 4.8

10 (4) A 250 V~
 6 (4) A 250 V~ 5E4
 5/50 A 250 V~
 T 100/55
 6 A (1/4 HP) 125 V AC
 6 A (1/2 HP) 250 V AC



1802.1108*
 1802.6103*
 1802.2104
 1802.5103*



1802.1101
 1802.0101



1802.1102*

* Version on stock

SERIES 1800 - SINGLE POLE AND DOUBLE POLE ROCKER SWITCHES

UP TO 12 (4) A 250 V~ AND 8 (8) A 250 V~

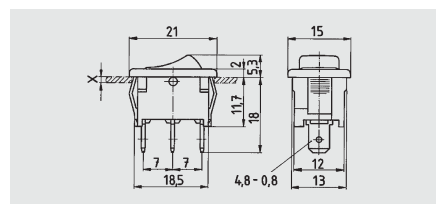
SINGLE POLE DT-SWITCHES

10 (4) A 250 V~
6 (4) A 250 V~ 5E4
T 100/55
6 A (1/4 HP) 125 V AC
6 A (1/2 HP) 250 V AC

DT-switches with  and -approval marks for 10 A on request



-  1803.1102*
-  1803.6102*
-  1803.2102
-  1803.5102



 quick-connect terminal 4.8

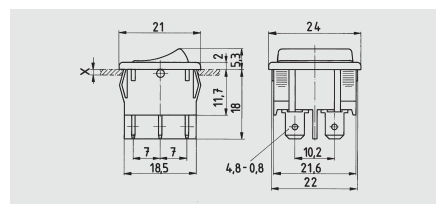
DOUBLE POLE DT-SWITCHES

10 (4) A 250 V~
6 (4) A 250 V~ 5E4
T 100/55
6 A (1/4 HP) 125 V AC
6 A (1/2 HP) 250 V AC

DT-switches with  and -approval marks for 10 A on request



-  1804.1102*
-  1804.6102*
-  1804.2102



 quick-connect terminal 4.8



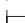
SINGLE POLE DT-SWITCHES

with centre-OFF



6 (2) A 250 V~ μ
T 100/55
6 A (1/8 HP) 125-250 V AC

Momentary function on one side on request



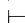


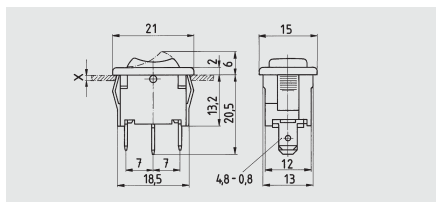
- without momentary
-  1808.1102*
 -  1808.0102*
 -  1808.2102*



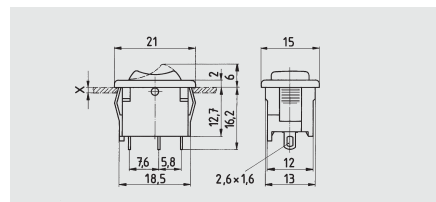
- without momentary
-  1808.1103*
 -  1808.0111*



- momentary on both sides
-  1808.1302*
 -  1808.0302*
 -  1808.2302*



 quick-connect terminal 4.8



 solder terminal

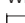
DOUBLE POLE DT-SWITCHES

with centre-OFF


6 (2) A 250 V~ μ
T 100/55
6 A (1/8 HP) 125-250 V AC

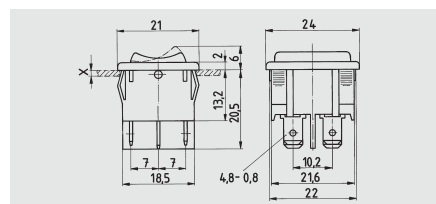
Momentary function from one side on request



- without momentary
-  1809.1102*



- momentary on both sides
-  1809.1302*



 quick-connect terminal 4.8

SINGLE POLE WITH MOMENTARY FUNCTION

4 (2) A 250 V~
 T 100/55
 6 A (1/10 HP) 125 V AC
 4 A (1/10 HP) 250 V AC



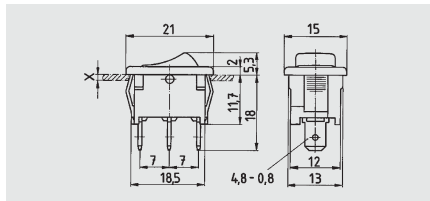
normally closed
 □ 1801.1302*



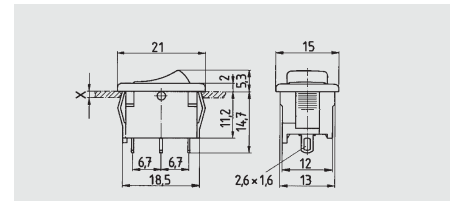
normally open
 □ 1801.1202*
 □ 1801.0202*



DT momentary
 □ 1803.1202*
 □ 1803.0202*



□ quick-connect terminal 4.8



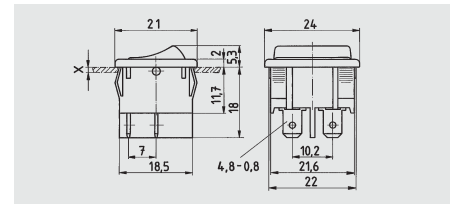
□ solder terminal

DOUBLE POLE WITH MOMENTARY FUNCTION

4 (2) A 250 V~
 T 100/55
 6 A (1/10 HP) 125 V AC
 4 A (1/10 HP) 250 V AC



normally open
 □ 1802.1221*



□ quick-connect terminal 4.8

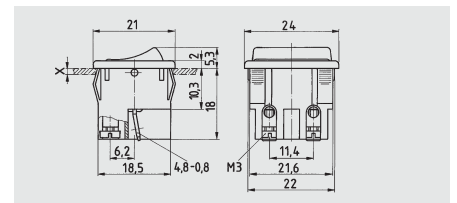
DOUBLE POLE ST-SWITCHES

for direct connection to the mains

10(4) A 250 V~
 6(4) A 250 V~ 5E4
 5/50 A 250 V~
 T 100/55
 6 A (1/4 HP) 125 V AC
 6 A (1/2 HP) 250 V AC



□ □ 1802.3102*



□ □ quick-connect 4.8
 and bush terminals

Higher electrical rating on request

PILOT LIGHTS

Pilot lights with neon lamps and resistor for 230 V~



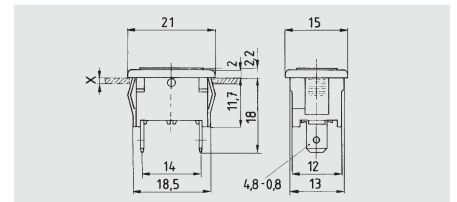
Pilot lights for 125 V AC on request



□ 1807.1102*



□ 1807.1108



□ quick-connect terminal 4.8

* Version on stock