



MASTER LEDtube InstantFit HF T5

Master LEDtube HF 1200mm HE 16.5W 840 T5

The Philips MASTER LEDtube integrates an LED light source into a traditional fluorescent form factor. Its unique design creates a perfectly uniform visual appearance, which cannot be distinguished from traditional fluorescents. These T5 lighting tubes are the right choice for absolute performance and are designed to stand up to everyday conditions. Unparalleled savings, thanks to low energy consumption and an exceptionally long lifetime, make these T5 LED tubes the choice for every demanding applications.

Product data

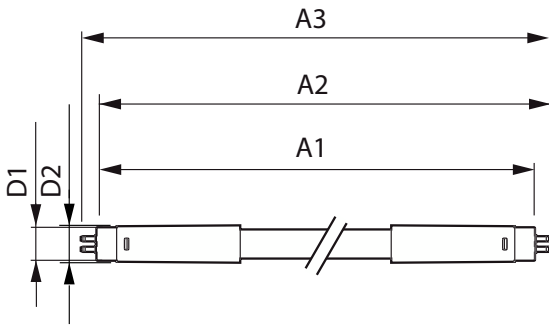
General information		Operating and electrical	
Cap base	G5 [G5]	Line Frequency	30K to 100K Hz
Nominal lifetime	60,000 h	Input frequency	30 K to 100 K Hz
Switching Cycle	50,000	Power Consumption	16.5 W
Lighting Technology	LED	Starting time (nom.)	0.5 s
Flux measurement reference	Sphere	Warm-up time to 60% light	0.5 s
		Power Factor (Fraction)	0.92
		Voltage (nom.)	70-120 V
Light technical		Temperature	
Colour Code	840 [CCT of 4000K]	T-Case maximum (nom.)	65 °C
Beam angle (nom.)	200 degree(s)		
Luminous Flux	2,500 lm	Controls and dimming	
Colour designation	Cool White (CW)	Dimmable	Yes – Check ballast compatibility
Correlated Colour Temperature	4000 K		
Luminous Efficacy (rated) (Nom)	151 lm/W	Mechanical and housing	
Colour consistency	<6	Lamp Finish	Frosted
Colour rendering index (CRI)	80	Bulb material	Glass
LLMF at end of nominal lifetime (nom.)	70 %		

MASTER LEDtube InstantFit HF T5

Product length	1,200 mm
Bulb shape	Tube, double-ended
Approval and application	
Energy-saving product	Yes
Approval marks	RoHS compliance TUV CE marking KEMA Keur certificate
Energy consumption kWh/1,000 hours	17 kWh
EPREL registration number	1,384,135
CE mark	Yes
EU RoHS compliant	Yes

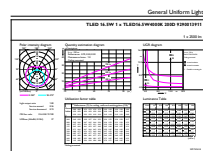
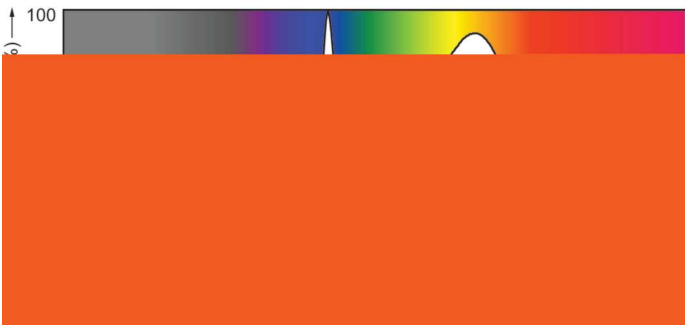
Product data	
Full EOC	871869674331700
Order product name	MAS LEDtube HF 1200mm HE 16.5W 840 T5
Order code	74331700
SAP numerator – quantity per pack	1
Numerator – packs per outer box	10
Material number (12NC)	929001391102
Full product name	Master LEDtube HF 1200mm HE 16.5W 840 T5
EAN/UPC – Case	8718696743324

Dimensional drawing



Product	D1	D2	A1	A2	A3
MAS LEDtube HF 1200mm HE 16.5W 840 T5	15.5 mm	18.8 mm	1,149 mm	1,156.1 mm	1,163.2 mm

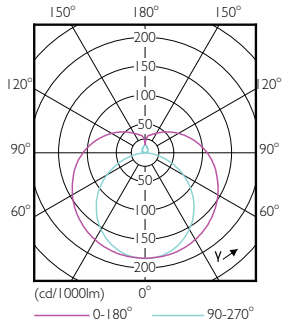
Photometric data



Spectral Power Distribution Colour - MAS LEDtube HF 1200mm HE 16.5W 840 T5

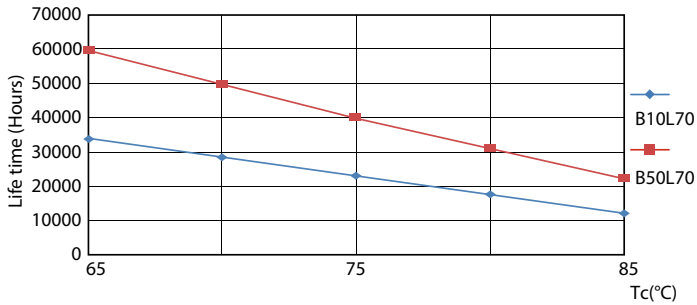
MASTER LEDtube InstantFit HF T5

Photometric data

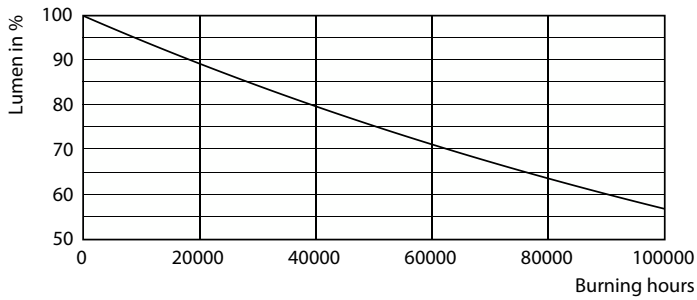


Light Distribution Diagram - MAS LEDtube HF 1200mm HE 16.5W 840 T5

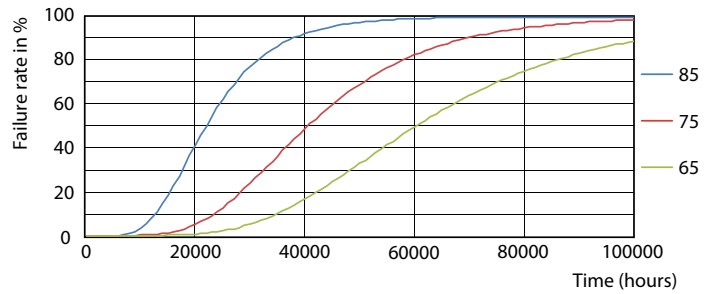
Lifetime



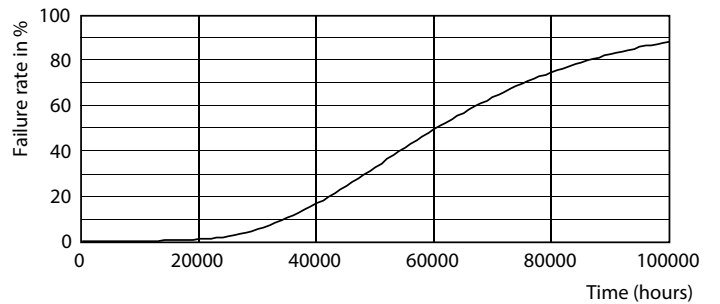
Life Expectancy Diagram - MAS LEDtube HF 1200mm HE 16.5W 840 T5



Lumen Maintenance Diagram - MAS LEDtube HF 1200mm HE 16.5W 840 T5



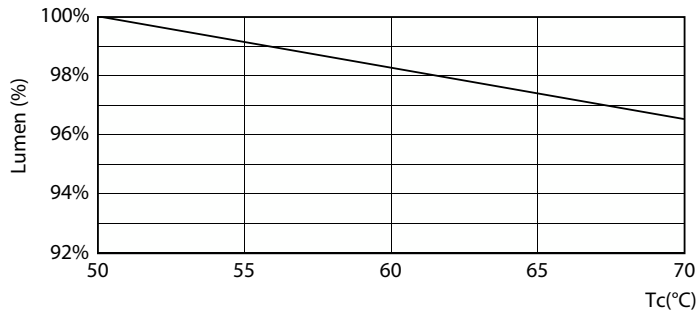
Life Expectancy Diagram - MAS LEDtube HF 1200mm HE 16.5W 840 T5



Life Expectancy Diagram - MAS LEDtube HF 1200mm HE 16.5W 840 T5

MASTER LEDtube InstantFit HF T5

Lifetime



Lumen Maintenance Diagram - MAS LEDtube HF 1200mm HE 16.5W 840 T5

