

Red Line Lasermodule

LB658-50-24(40x210)-G

Order Number: 70115635

Main Parameters (*)	min	typ	max	Unit
Wavelength		658		nm
Optical Output Power		50		mW
Operating Voltage	21.6	24	26.4	V DC
Operating Current	50	100	150	mA
Operating Temperature	-20		50	°C
Storage Temperature	-40		80	°C

Optical Parameters

Beam Shape	Line
Laser Class	2M
Divergence	0.3mrad
Fan Angle	90°
Line Thickness	<3mm@7m
Operating Distance	25m
Optics	glass lens AR coated
Laser technology	Single Mode Diode
Focus	fixed (7.0m)

Technical Parameters

Lifetime	>10000h
RoHS	yes

Electrical Parameters

Potential of Housing	isolated
----------------------	----------

Mechanical Parameters

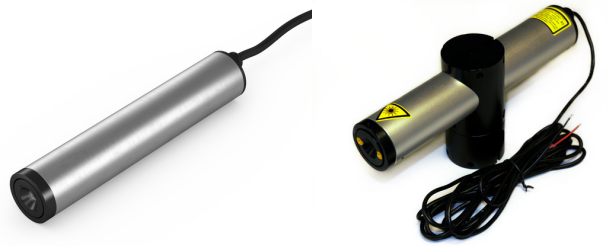
Size	Ø40x210mm
Material	aluminium
Cable length	3000mm
Wire type	18AWG, black, 3,6mm
Output Aperture	8mm
Weight	920g
Protection Class	IP64
Stripping of wire	5mm
Stripping of cable cover	50mm

(*) Over the complete operating temperature range



Features

- Operating Voltage 24V DC
- Laser Class 2M
- Operating Voltage 24V DC
- Glas lenses anti reflex coated
- Uniform line thickness

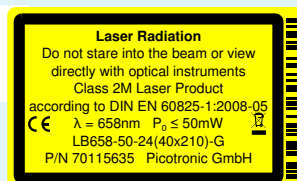
Picture



Cable Colors

Ground		black	GND
Positive		red	21.6 - 26.4, typ 24V DC

Safety Label



Revision

REV 1 | 28-SEP-2015