

S32K142 EVB

QUICK START GUIDE

REV3

APPLIES FOR: S32K142 EVB (SCH_29701 REV D/C)



EXTERNAL USE



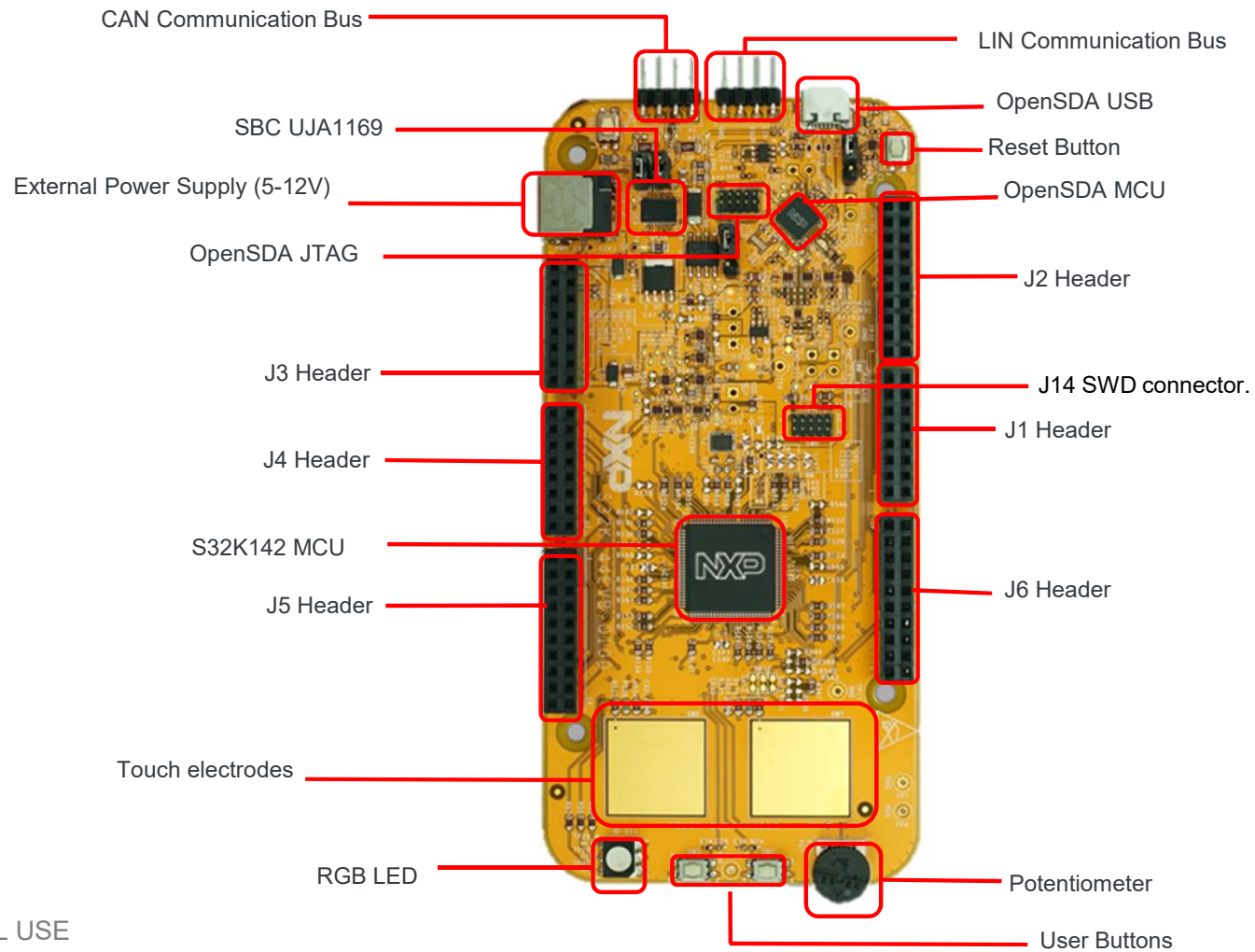
SECURE CONNECTIONS
FOR A SMARTER WORLD

Contents:

- Get to Know S32K142 EVB
- Out of the Box Setup
- Out of the Box Experience (OOBE) based on the FreeMASTER tool
- Introduction to OpenSDA
- Creating a new S32DS project for S32K142:
 - Download
 - Create a project
 - Create a project from SDK example
- S32DS Debug basics
- Create a P&E debug configuration

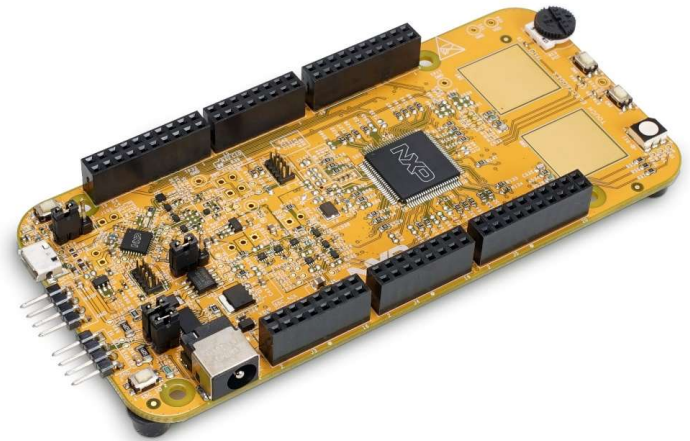


Get to know S32K142-EVB



S32K142 EVB Features:

- Supports **S32K142 and S32K144 100LQFP**
- Small form factor size supports up to 6" x 4"
- Arduino™ UNO footprint-compatible with expansion “shield” support
- Integrated open-standard serial and debug adapter (OpenSDA) with support for several industry-standard debug interfaces
- Easy access to the MCU I/O header pins for prototyping
- On-chip connectivity for CAN, LIN, UART/SCI.
- SBC UJA1169 and LIN phy TJA1027
- Potentiometer for precise voltage and analog measurement
- RGB LED
- Two push-button switches (SW2 and SW3) and two touch electrodes
- Flexible power supply options
 - microUSB
 - external 12V power supply

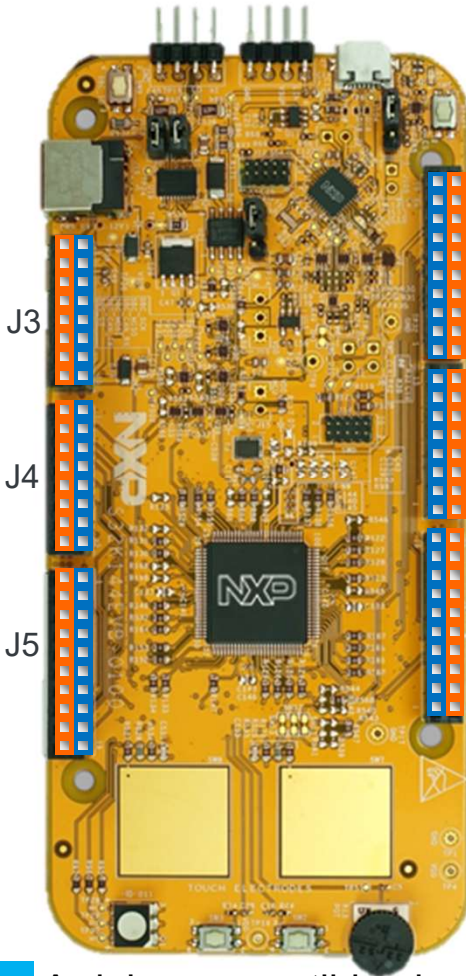


Header/Pinout Mapping for S32K142

PIN	PORT	FUNCTION	J3	PIN	PORT	FUNCTION
J3-02	PTB6*	GPIO	■	J3-01		VIN
J3-04	PTB7*	GPIO	■	J3-03		IOREF
J3-06	PTE0	GPIO	■	J3-05	PTA5	RESET
J3-08	PTE9	GPIO	■	J3-07		3V3
J3-10	PTC5	GPIO	■	J3-09		5V
J3-12	PTC4	GPIO	■	J3-11		GND
J3-14	PTA10	GPIO	■	J3-13		GND
J3-16	PTA4	GPIO	■	J3-15		VIN

PIN	PORT	FUNCTION	J4	PIN	PORT	FUNCTION
J4-02	PTC7	GPIO	■	J4-01	PTD4	ADC0
J4-04	PTC6	GPIO	■	J4-03	PTB12	ADC1
J4-06	PTB17	GPIO	■	J4-05	PTB0	ADC2
J4-08	PTB14	GPIO	■	J4-07	PTB1	ADC3
J4-10	PTB15	GPIO	■	J4-09	PTA6/PTE11/PTA2	ADC4
J4-12	PTB16	GPIO	■	J4-11	PTC0/PTE10/PTA3	ADC5
J4-14	PTC14	GPIO	■	J4-13	PTE2	ADC6
J4-16	PTC3	GPIO	■	J4-15	PTE6	ADC7

PIN	PORT	FUNCTION	J5	PIN	PORT	FUNCTION
J5-02	PTE16	GPIO	■	J5-01	PTA15/PTD11	ADC8
J5-04	PTE15	GPIO	■	J5-03	PTA16/PTD10	ADC9
J5-06	PTE14	GPIO	■	J5-05	PTA1	ADC10
J5-08	PTE13	GPIO	■	J5-07	PTA0	ADC11
J5-10		VDD	■	J5-09	PTA7	ADC12
J5-12		GND	■	J5-11	PTB13	ADC13
J5-14	PTE1	GPIO	■	J5-13	PTC1	ADC14
J5-16	PTD7	GPIO	■	J5-15	PTC2	ADC15
J5-18	PTD6	GPIO	■	J5-17	NC	GPIO
J5-20	PTC15	GPIO	■	J5-19	NC	N/A



PIN	PORT	FUNCTION	J2	PIN	PORT	FUNCTION
J2-19	PTE10/PTA3	D15/I2C_SDA	■	J2-20	NC	GPIO
J2-17	PTE11/PTA2	D14/I2C_CLK	■	J2-18	NC	GPIO
J2-15		ANALOGUE REF	■	J2-16	PTA14	GPIO
J2-13		GND	■	J2-14	PTE7	GPIO
J2-11	PTB2	D13/SPI_SCK	■	J2-12	PTC13	GPIO
J2-09	PTB3	D12/SPI_SIN	■	J2-10	PTC12	GPIO
J2-07	PTB4	D11/SPI_SOUT	■	J2-08	PTE8	GPIO
J2-05	PTB5	D10/SPI_CS	■	J2-06	PTD0	GPIO
J2-03	PTD14	D9/PWM	■	J2-04	PTD16	GPIO
J2-01	PTD13	D8/PWM	■	J2-02	PTD15	GPIO

PIN	PORT	FUNCTION	J1	PIN	PORT	FUNCTION
J1-15	PTC11/PTE8	D7	■	J1-16	PTE3	GPIO
J1-13	PTC10/PTC3	D6	■	J1-14	PTD3	GPIO
J1-11	PTB11	D5	■	J1-12	PTD5	GPIO
J1-09	PTB10	D4	■	J1-10	PTD12	GPIO
J1-07	PTB9	D3	■	J1-08	PTD11	GPIO
J1-05	PTB8	D2	■	J1-06	PTD10	GPIO
J1-03	PTA3	D1	■	J1-04	PTA17	GPIO
J1-01	PTA2	D0	■	J1-02	PTA11	GPIO

PIN	PORT	FUNCTION	J6	PIN	PORT	FUNCTION
J6-19	PTA9	D14	■	J6-20	PTE4	GPIO
J6-17	PTA8	D15	■	J6-18	PTE5	GPIO
J6-15	PTE12	D16	■	J6-16	PTA12	GPIO
J6-13	PTD17	D17	■	J6-14	PTA13	GPIO
J6-11	PTC9	D18	■	J6-12		GND
J6-09	PTC8	D19	■	J6-10		VDD
J6-07	PTD8	D20	■	J6-08	PTC16	GPIO
J6-05	PTD9	D21	■	J6-06	PTC17	GPIO
J6-03	PTD2	GPIO	■	J6-04	PTD3	GPIO
J6-01	PTD0	GPIO	■	J6-02	PTD1	GPIO

■ Arduino compatible pins
 ■ NXP pins



*0ohm resistor is not connected

Jumper Settings

Jumper	Configuration	Description
J104	1-2	Reset signal to OpenSDA, use to enter into OpenSDA Bootloader mode
	2-3 (Default)	Reset signal direct to the MCU, use to reset S32K142.
J107	1-2	S32K142 powered by 12V power source.
	2-3 (Default)	S32K142 powered by USB micro connector.
J10	2-3 (Default)	MCU voltage 5v
	1-2	MCU voltage 3.3v



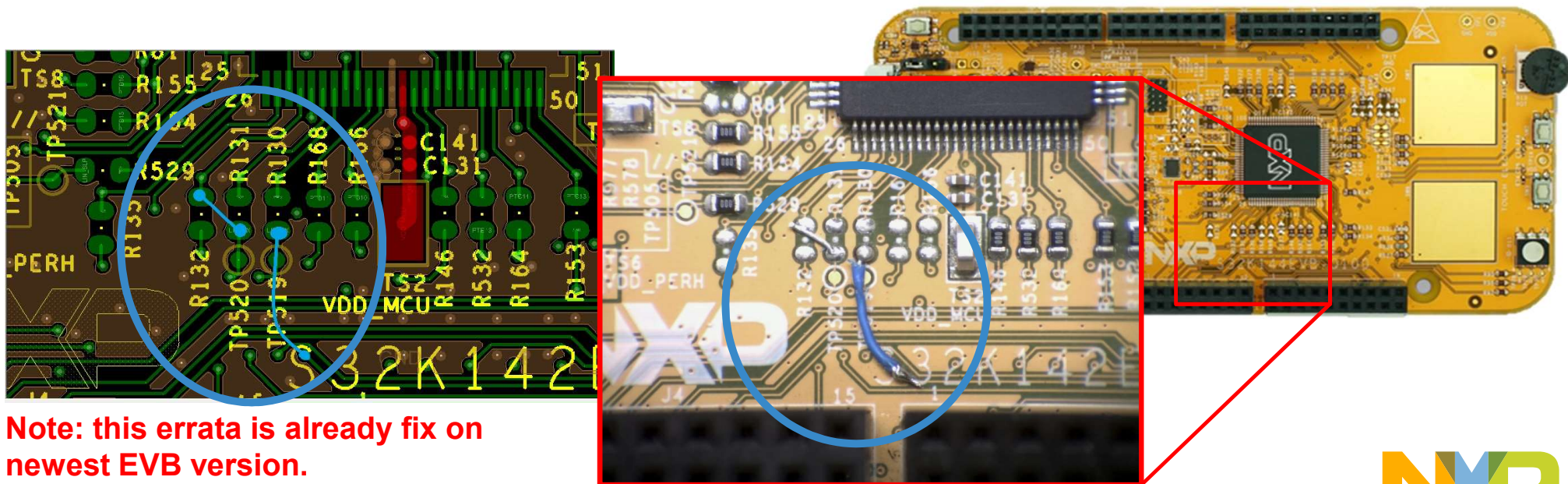
HMI mapping

Component	S32K142
Red LED	PTD15 (FTM0 CH0)
Blue LED	PTD0(FTM0 CH2)
Green LED	PTD16(FTM0 CH1)
Potentiometer	PTC14 (ADC0_SE12)
SW2	PTC12
SW3	PTC13
OpenSDA UART TX	PTC7(LPUART1_TX)
OpenSDA UART RX	PTC6(LPUART1_RX)
CAN TX	PTE5(CAN0_TX)
CAN RX	PTE4 (CAN0_RX)
LIN TX	PTC3(LPUART0_TX)
LIN RX	PTC2 (LPUART0_RX)
SBC_SCK	PTB14 (LPSP11_SCK)
SBC_MISO	PTB15(LPSP11_SIN)
SBC_MOSI	PTB16(LPSP11_SOUT)
SBC_CS	PTB17(LPSP11_PCS3)



S32K142 EVB RevC. LIN Phy errata.

- Errata: the LIN phy on S32K142EVB is connected to S32K142's pins 32/31 which don't support LPUART.
- Workaround: Connect MCU's pin 29 to LIN Phy's LIN_TX trace and MCU's pin 30 to LIN Phy's LIN_RX trace at PCB level. This can be done by removing R131 and R130, connecting pad 1 of R132(DNP) to pad 2 of R131 and pad 2 of R130 to MCU's pin 30 via, as shown below.



Note: this errata is already fix on newest EVB version.

S32K142 EVB OUT OF THE BOX



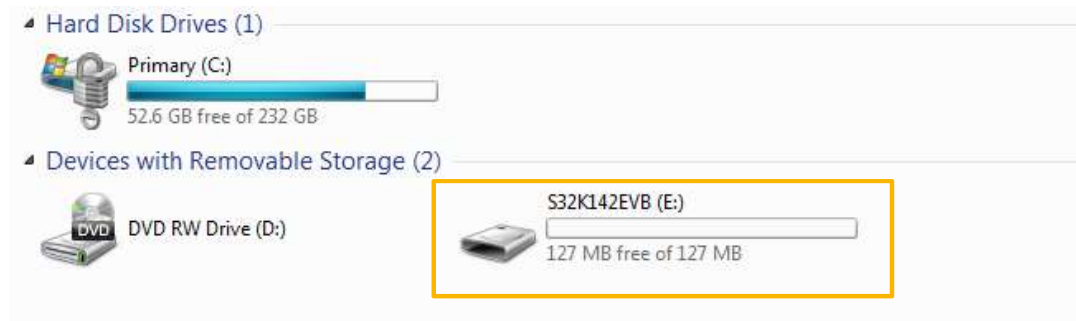
Step 1: Power up the Board – EVB Power Supplies

- The S32K142-EVB evaluation board powers from a USB or external 12V power supply. By default USB power is enabled with J107 (check slide 5)
- Connect the USB cable to a PC using supplied USB cable .
- Connect other end of USB cable (microUSB) to mini-B port on S32K142-EVB at J7
- Allow the PC to automatically configure the USB drivers if needed
- Debug is done using OpenSDA through J7



Step 1: Power up the Board – Is it powered on correctly?

- When powered through USB, LEDs D2 and D3 should light green
- Once the board is recognized, it should appear as a mass storage device in your PC with the name EVB-S32K142.



Step 1: Power up the Board – Is it powered on correctly?

- Board is preloaded with a software, in which the red, blue and green leds will toggle at different rates.

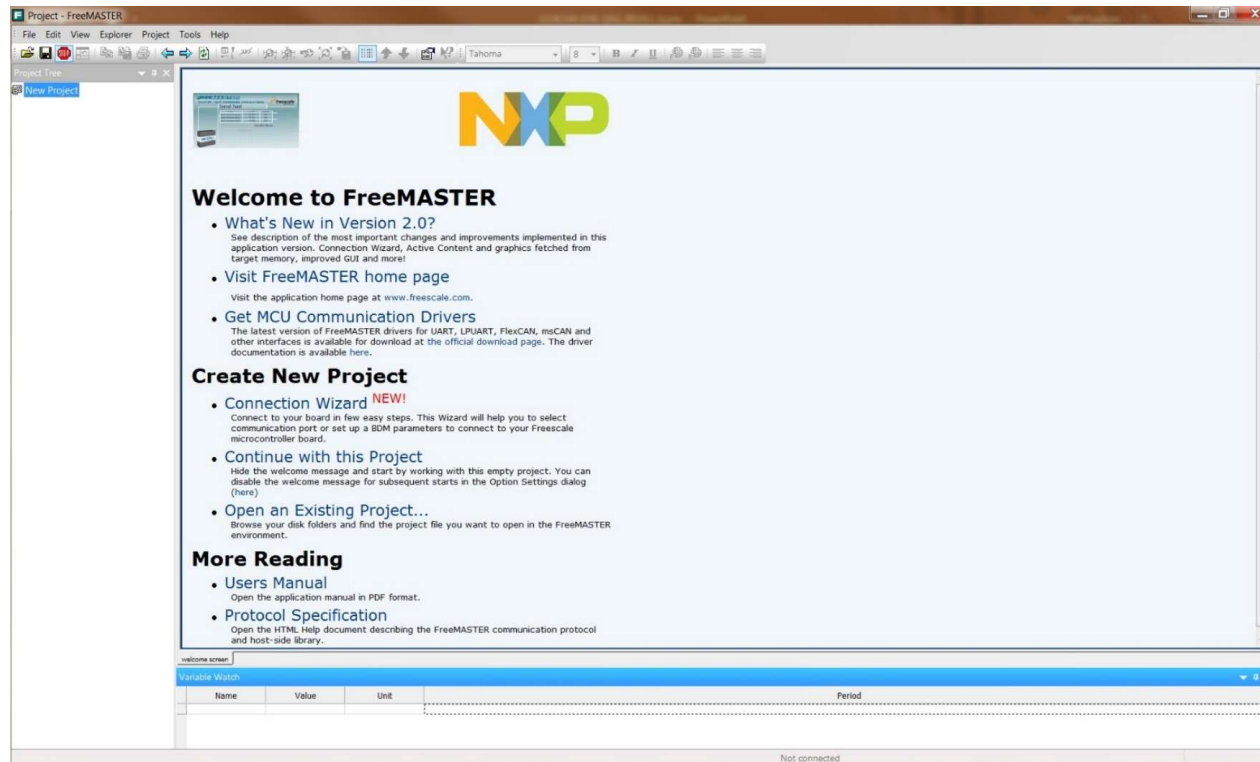


**S32K142 EVB
OUT OF THE BOX
EXPERIENCE
BASED ON THE
FREEMASTER TOOL**



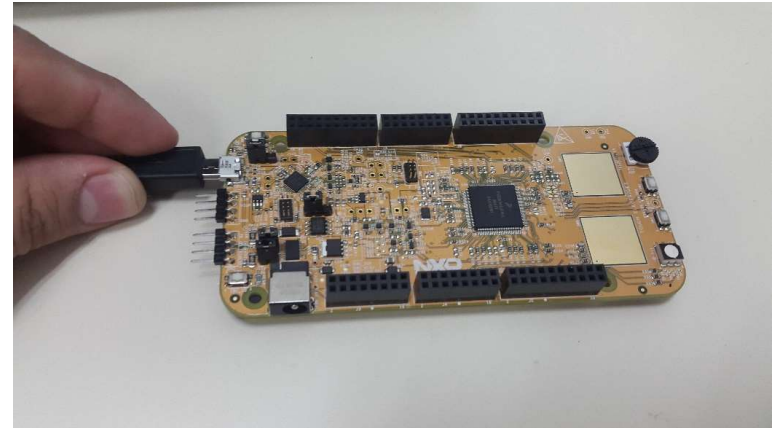
Install the FreeMASTER tool

- Download and install the FreeMASTER PC application www.nxp.com/FreeMASTER .
- Open the FreeMASTER application on your PC. You should see Welcome page:



Power up the EVB board

- Powers the S32K142EVB evaluation board from a USB. By default, the USB power is enabled by J8 jumper.
- Connect the USB cable to a PC and connect micro USB connector of the USB cable to micro-B port J7 on the S32K14EVB.
- Allow the PC to automatically configure the USB drivers if needed.
- When EVB is powered from USB, LEDs D2 and D3 should light green.
- The EVB board is preloaded with a software toggling the RGB LED colours periodically between RED-GREEN-BLUE.



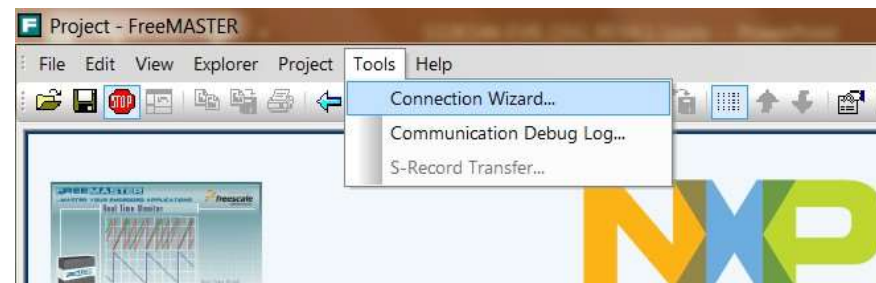
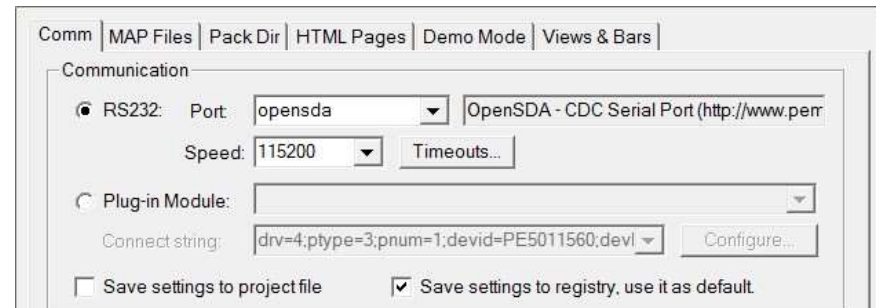
Setup serial connection in the FreeMASTER tool

Setup communication port to „opensda“ and speed to 115200 b/s:

- Setup communication manually:
„Project > Options > Comm“

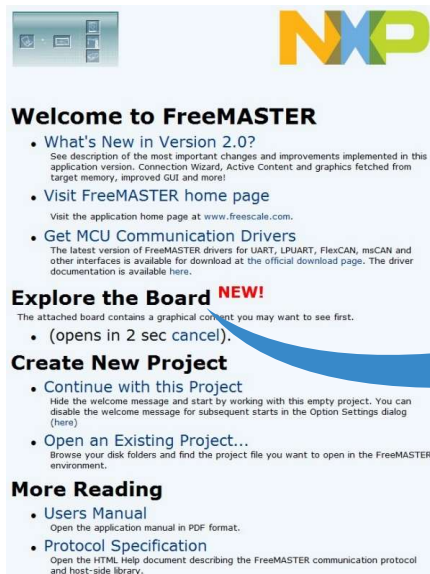
OR

- Setup communication automatically:
„Tools > Connection Wizard“



The FreeMASTER Out-Of-Box-Experience (OOBE) project will be automatically downloaded from www.nxp.com

Once the FreeMASTER application detects the web address stored as an TSA active content in the flash memory of the S32K142 MCU, the download of the FreeMASTER project from www.nxp.com will be initiated.



Welcome to FreeMASTER

- **What's New in Version 2.0?**
See description of the most important changes and improvements implemented in this application version. Connection Wizard, Active Content and graphics fetched from target memory, improved GUI and more!
- **Visit FreeMASTER home page**
Visit the application home page at www.freescale.com.
- **Get MCU Communication Drivers**
The latest version of FreeMASTER drivers for UART, LPUART, FlexCAN, mSCAN and other interfaces is available for download at the official download page. The driver documentation is available here.

Explore the Board NEW!
The attached board contains a graphical content you may want to see first.

- (opens in 2 sec cancel).

Create New Project

- **Continue with this Project**
Hide the welcome message and start by working with this empty project. You can disable the welcome message for subsequent starts in the Option Settings dialog (here)
- **Open an Existing Project...**
Browse your disk folders and find the project file you want to open in the FreeMASTER environment.

More Reading

- **Users Manual**
Open the application manual in PDF format.
- **Protocol Specification**
Open the HTML Help document describing the FreeMASTER communication protocol and host-side library.

Explore the Board NEW!
The attached board contains a graphical content you may want to see first.

- (opens in 0 sec loading project, please wait...).

The FreeMASTER OOB Experience project is loaded

S32K142EVb_OOB - FreeMASTER

File Edit View Explorer Project Tools Help

Pins of the J2, J1 and J6 connectors are configured as outputs (except pins 10 and 12 on the J2 connector).

CONNECTOR J2 CONNECTOR J1 CONNECTOR J6

CONNECTOR J3 CONNECTOR J4 CONNECTOR J5

Pins of the J3, J4 and J5 connectors are configured as inputs.

S32K14x Web Links:

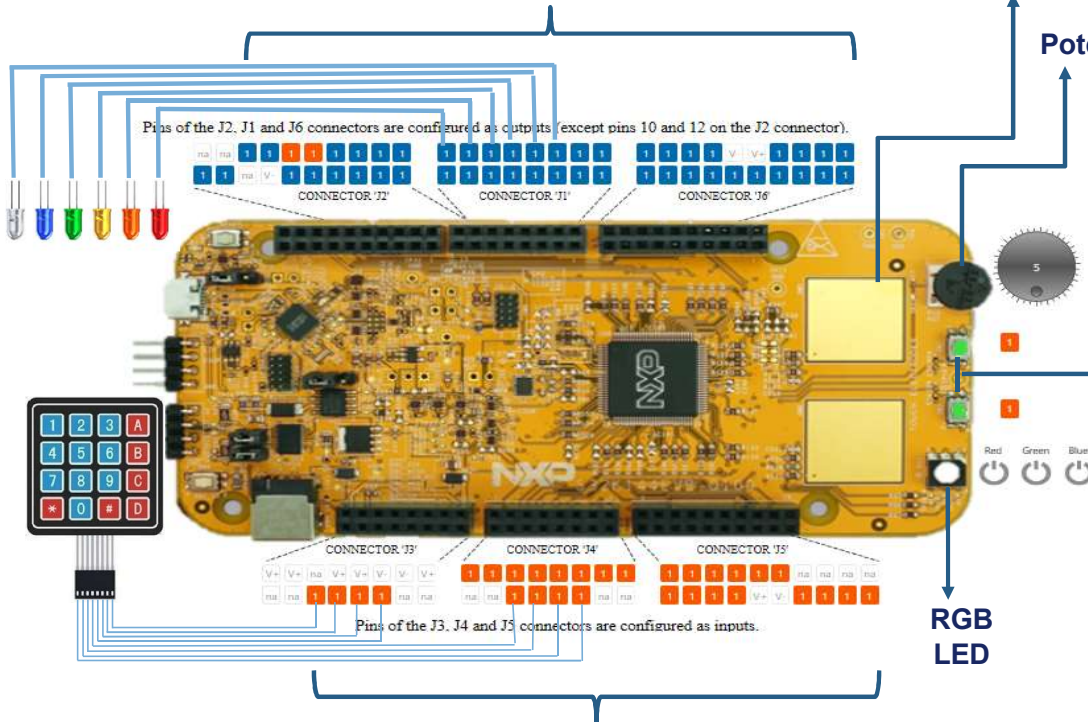
- >> S32K Overview
- >> S32K142 Evaluation Board:
 - > Getting Started
 - > S32K142EVb Quick Start Guide
 - > S32K142EVb-Q100 Schematic
 - > S32K1xx Fact Sheet
 - > S32K1xx Data Sheet
 - > S32K14x Reference Manual
 - > S32K1xx Product Brief
- >> SW Tools:
 - > FreeMASTER Run-Time Debugging Tool
 - > S32 Design Studio IDE
- >> S32K142 Out-Of-Box Experience Sources:
 - > S32K142 EVb Out-Of-Box Experience PC Host Project
 - > S32K142 EVb Out-Of-Box Experience Firmware

control page

Not connected

The FreeMASTER OOB E project description

Pins of the J2, J1 and J6 connectors are configured as outputs. By single click on each pin you can change their logical level to log0 or log1. User can connect e.g. LED diodes to these output pins.



S32K14x Web Links:

- >> S32K Overview
- >> S32K142 Evaluation Board:
 - > Getting Started
 - > S32K142EV B Quick Start Guide
 - > S32K142EV B-Q100 Schematic
 - > S32K1xx Fact Sheet
 - > S32K1xx Data Sheet
 - > S32K14x Reference Manual
 - > S32K1xx Product Brief
- >> SW Tools:
 - > FreeMASTER Run-Time Debugging Tool
 - > S32 Design Studio IDE
- >> S32K142 Out-Of-Box Experience Sources:
 - > S32K142 EV B Out-Of-Box Experience PC Host Project
 - > S32K142 EV B Out-Of-Box Experience Firmware

Links to S32K14x docs:

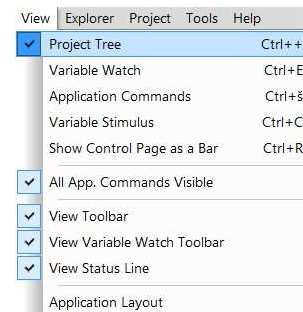
- Fact Sheet
- Data Sheet
- Reference Manual
- Product Brief
- S32K14xEVB schematic
- S32K14xEVB Quick Start Guide
- Tools:
 - FreeMASTER
 - S32 Design Studio IDE
- S32K14xEVB OOB E source files

Pins of the J3, J4 and J5 connectors are configured as inputs. Logical level (log0/log1) is visualised for all connector pins. User can connect e.g. push-button keyboard to these input pins.

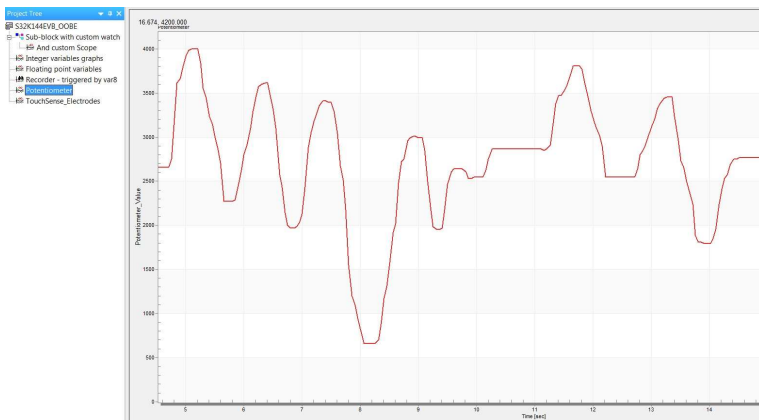


The FreeMASTER OOB E oscilloscope feature examples

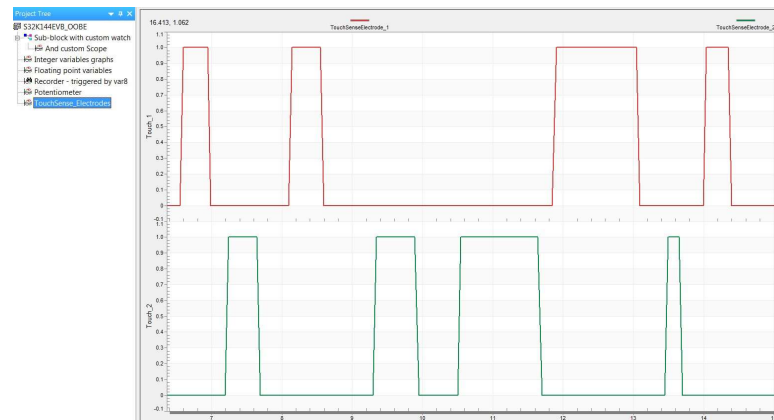
- Display main project panel „Project > View > Project Tree“.



- Display real-time oscilloscope graph examples such as „Potentiometer“ or „Touch Sense Electrodes“.



Analog values from potentiometer.



Responses from touch sense electrodes.

INTRODUCTION TO OPENSDA



Introduction to OpenSDA: 1 of 2

OpenSDA is an open-standard serial and debug adapter. It bridges serial and debug communications between a USB host and an embedded target processor. OpenSDA software includes a flash-resident USB mass-storage device (MSD) bootloader and a collection of OpenSDA Applications. S32K142 EVB comes with the MSD Flash Programmer OpenSDA Application preinstalled. Follow these instructions to run the OpenSDA Bootloader and update or change the installed OpenSDA Application.

Enter OpenSDA Bootloader Mode

1. Unplug the USB cable if attached
2. Set J104 on position 1-2.
3. Press and hold the Reset button (SW5)
4. Plug in a USB cable (not included) between a USB host and the OpenSDA USB connector (labeled “SDA”)
5. Release the Reset button

A removable drive should now be visible in the host file system with a volume label of **BOOTLOADER**. You are now in OpenSDA Bootloader mode.

IMPORTANT NOTE: Follow the “Load an OpenSDA Application” instructions to update the MSD Flash Programmer on your S32K142 EVB to the latest version.

Load an OpenSDA Application

1. While in OpenSDA Bootloader mode, double-click **SDA_INFO.HTML** in the **BOOTLOADER** drive. A web browser will open the OpenSDA homepage containing the name and version of the installed Application. This information can also be read as text directly from **SDA_INFO.HTML**
2. Locate the **OpenSDA Applications**
3. Copy & paste or drag & drop the MSD Flash Programmer Application to the **BOOTLOADER** drive
4. Unplug the USB cable and plug it in again. The new OpenSDA Application should now be running and a **S32K142 EVB** drive should be visible in the host file system

You are now running the latest version of the MSD Flash Programmer. Use this same procedure to load other OpenSDA Applications.



Introduction to OpenSDA: 2 of 2

The MSD Flash Programmer is a composite USB application that provides a virtual serial port and an easy and convenient way to program applications into the S32K142 MCU. It emulates a FAT file system, appearing as a removable drive in the host file system with a volume label of EVB-S32K142. Raw binary and Motorola S-record files that are copied to the drive are programmed directly into the flash of the S32K142 and executed automatically. The virtual serial port enumerates as a standard serial port device that can be opened with standard serial terminal applications.

Using the MSD Flash Programmer

1. Locate the .srec file of your project, file is under the Debug folder of the S32DS project.
2. Copy & paste or drag & drop one of the .srec files to the EVB-S32K142 drive

The new application should now be running on the S32K142 EVB. Starting with v1.03 of the MSD Flash Programmer, you can program repeatedly without the need to unplug and reattach the USB cable before reprogramming.

Drag one of the .srec code for the S32K142. the S32K142 EVB board over USB to reprogram the preloaded code example to another example.

NOTE: Flash programming with the MSD Flash Programmer is currently only supported on Windows operating systems. However, the virtual serial port has been successfully tested on Windows, Linux and Mac operating systems.

Using the Virtual Serial Port

1. Determine the symbolic name assigned to the EVB-S32K142 virtual serial port. In Windows open Device Manager and look for the COM port named "PEMicro/Freescale – CDC Serial Port".
2. Open the serial terminal emulation program of your choice. Examples for Windows include [Tera Term](#), [PuTTY](#), and [HyperTerminal](#)
3. Press and release the Reset button (SW5) at anytime to restart the example application. Resetting the embedded application will not affect the connection of the virtual serial port to the terminal program.
4. It is possible to debug and communicate with the serial port at the same time, no need to stop the debug.

NOTE: Refer to the OpenSDA User's Guide for a description of a known Windows issue when disconnecting a virtual serial port while the COM port is in use.



INSTALLING S32DS



Download S32DS

Download S32DS from:

[S32DS for ARM](#)

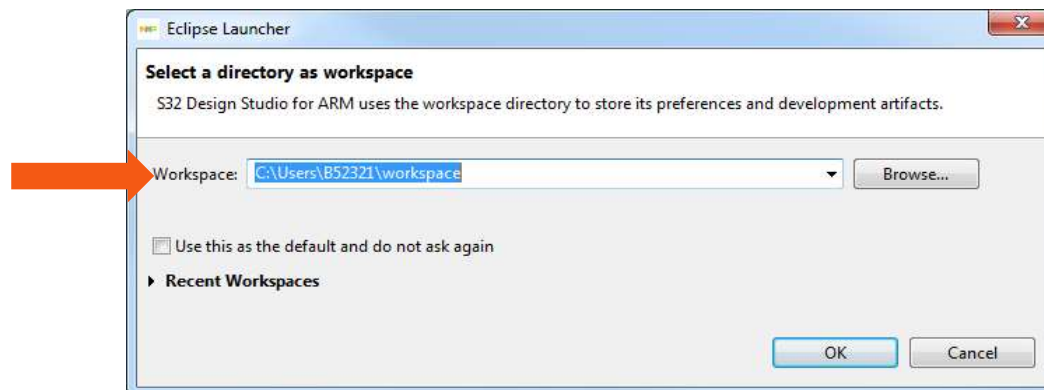


CREATE A NEW PROJECT IN S32 DESIGN STUDIO



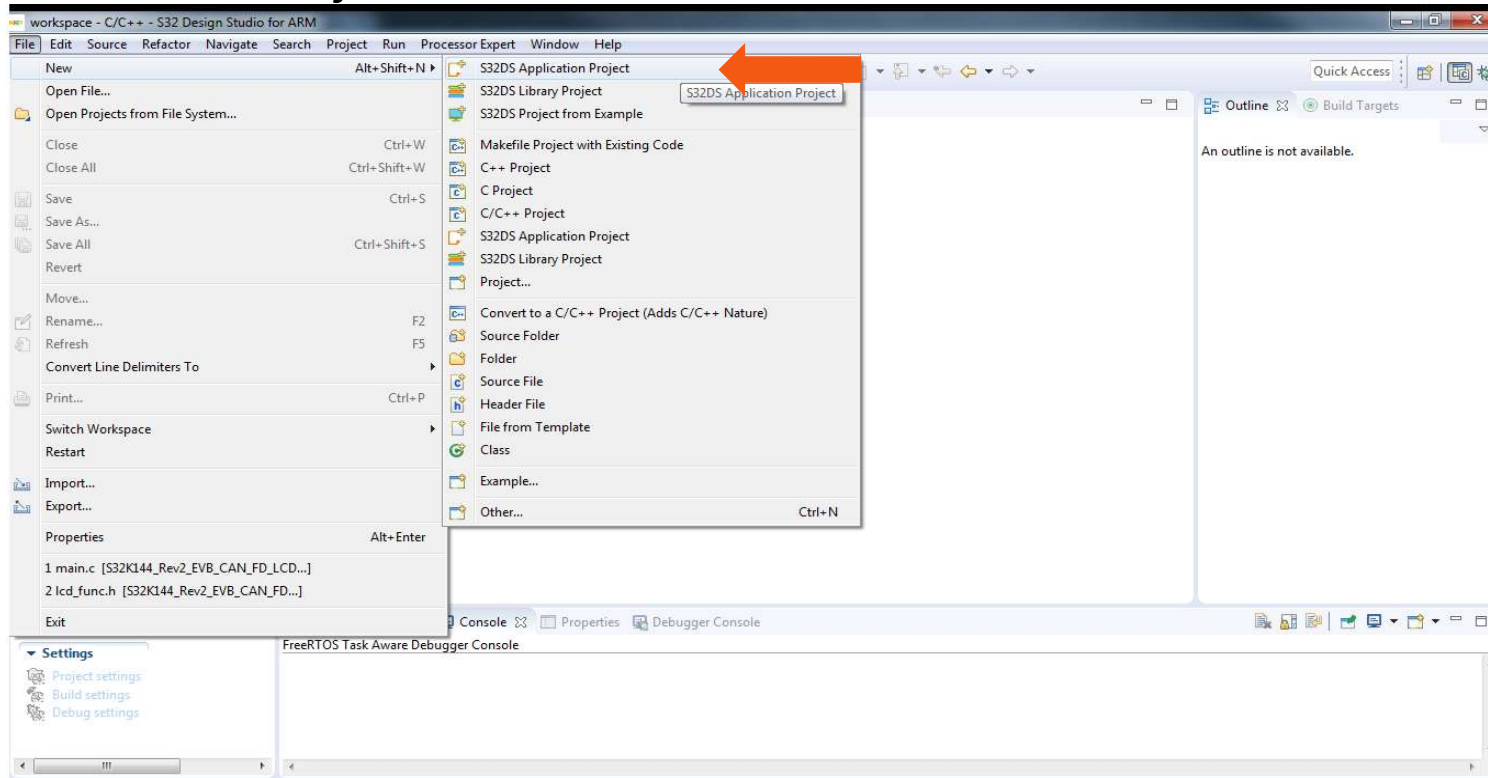
Create New Project: First Time – Select a Workspace

- Start program: Click on “S32 Design Studio for ARM v2.0” icon
- Select workspace:
 - Choose default (see below example) or specify new one
 - Suggestion: Uncheck the box “Use this as the default and do not ask again”
 - Click OK



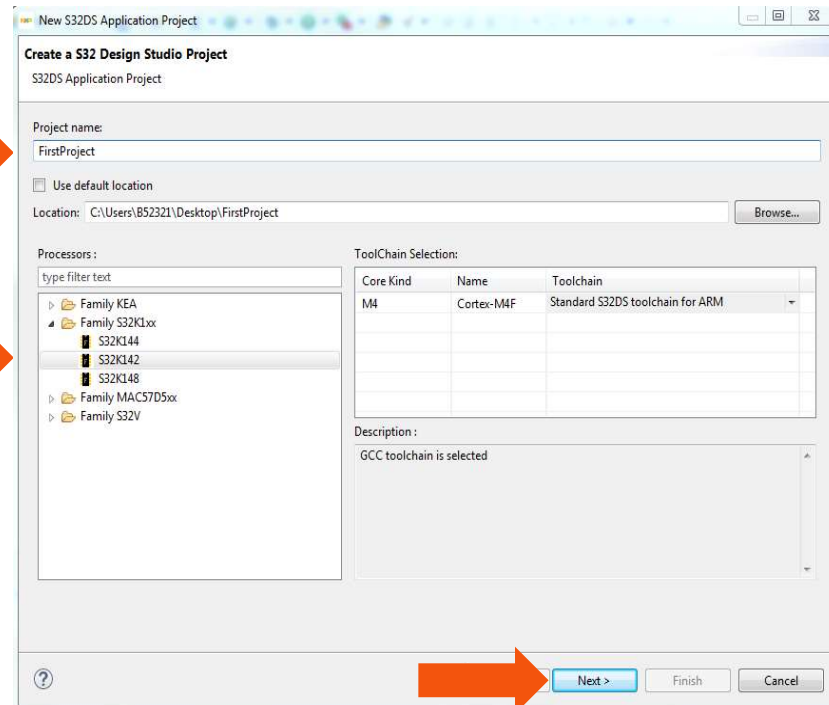
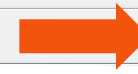
Create New Project: Top Menu Selection

- File – New –Project



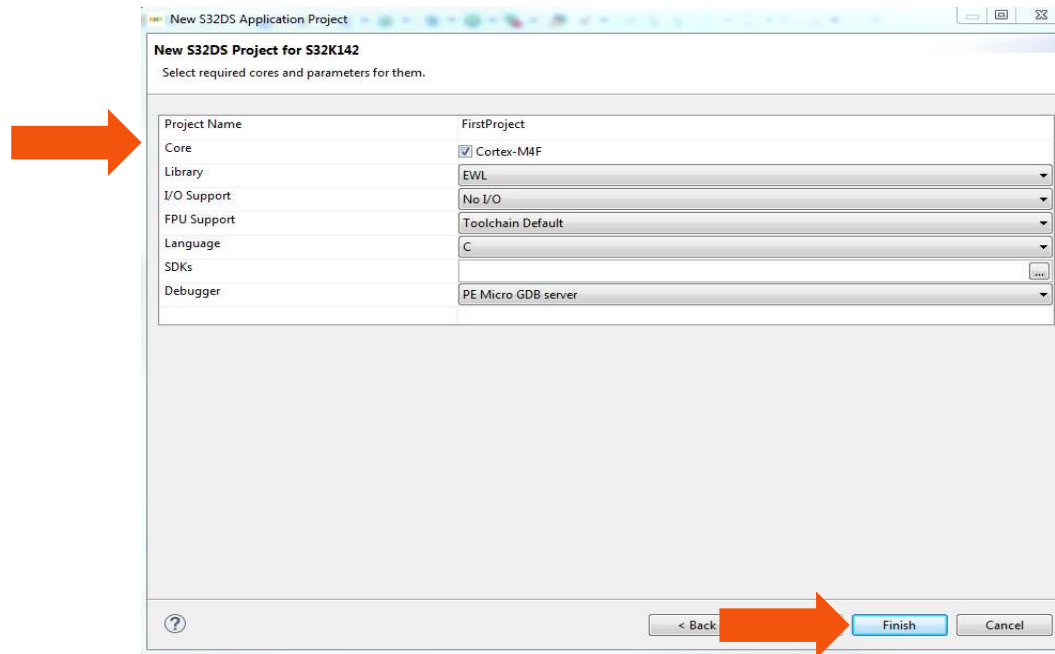
Create New Project: S32DS Project

- Project Name:
 - Example: FirstProject
- Project Type:
 - Select from inside executable or library folder
- Next



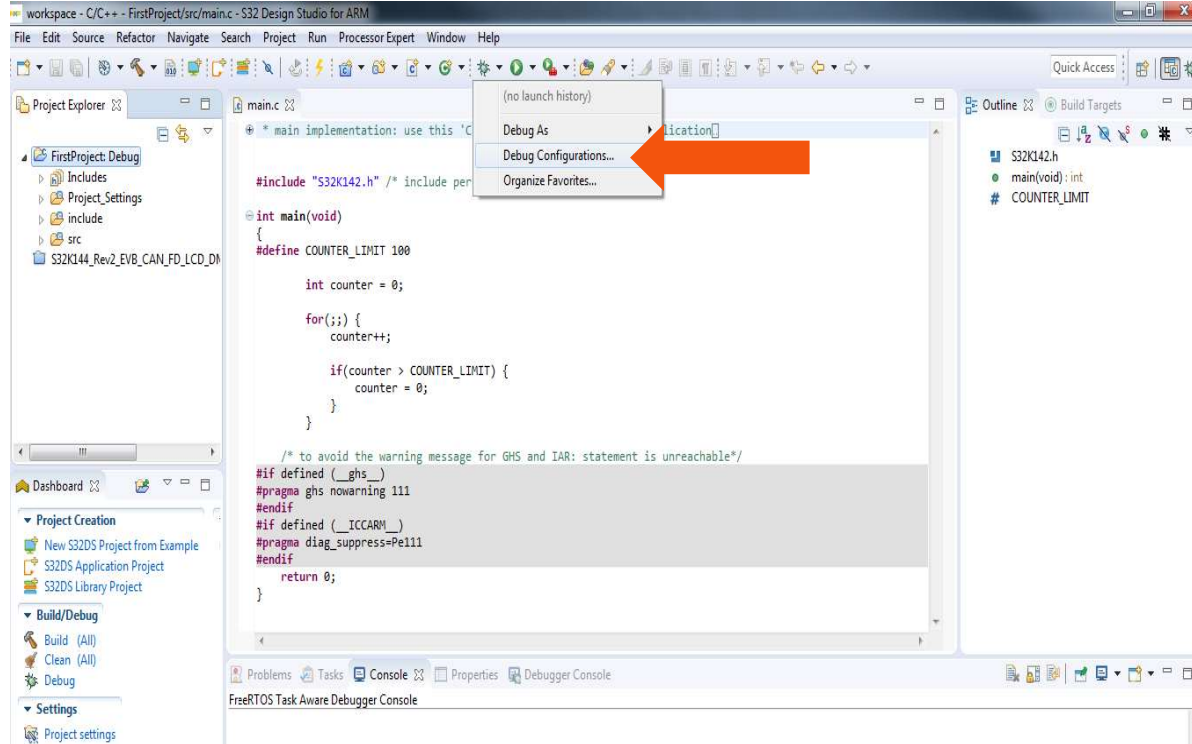
Create New Project: S32DS Project

- Select Debugger Support and Library Support
- Click Finish



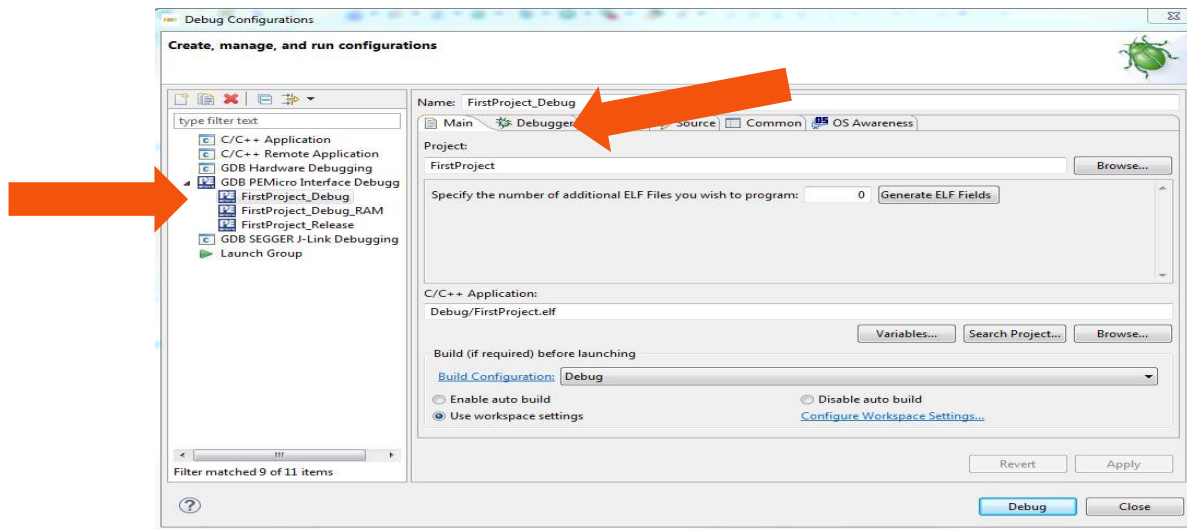
OpenSDA Configuration

- To Debug your project with OpenSDA, it is necessary to select the OpenSDA in the Debug Configuration.
- Select your project, and click on debug configuration



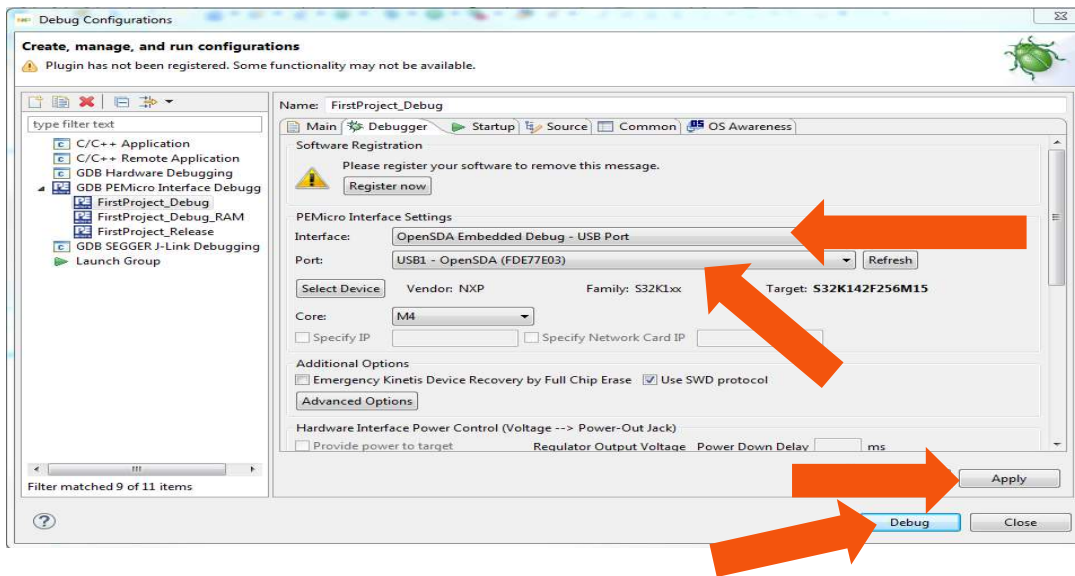
OpenSDA Configuration

- Select the Debug configuration under GDB PEMicro Interface Debugging
- Click on Debugger tab



OpenSDA Configuration

- Select OpenSDA as the interface, if your board is plugged should appear in the Port field.
- Click Apply and debug to finish.

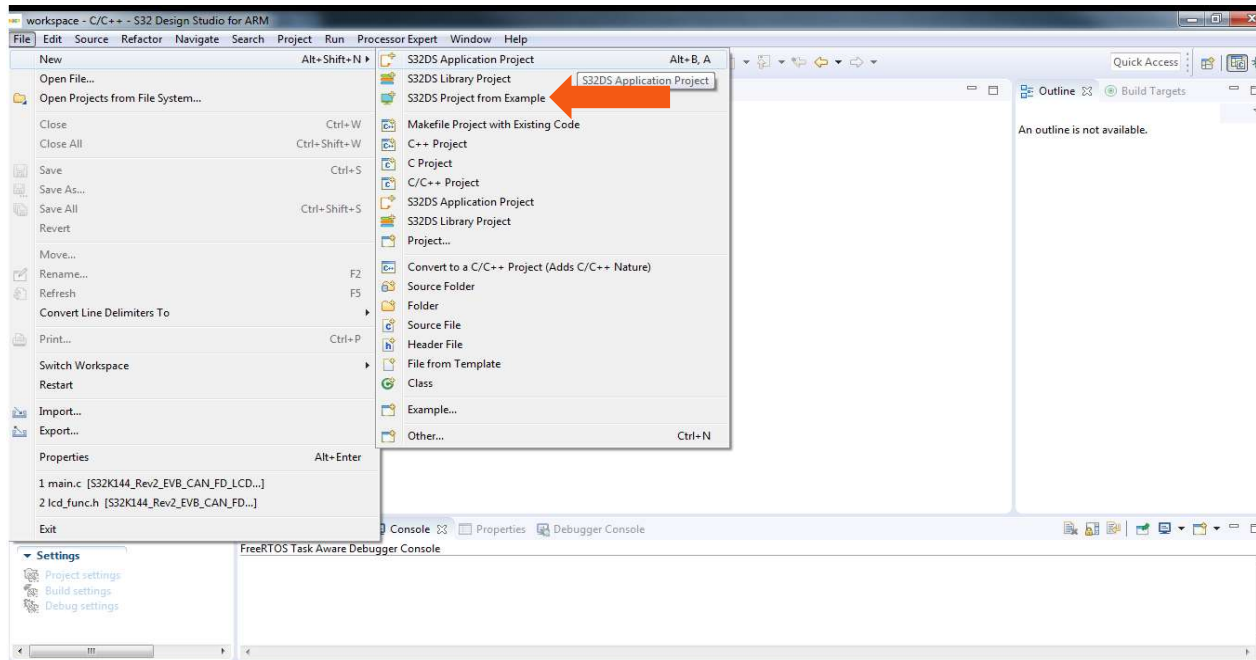


CREATE AN EXAMPLE FROM SDK



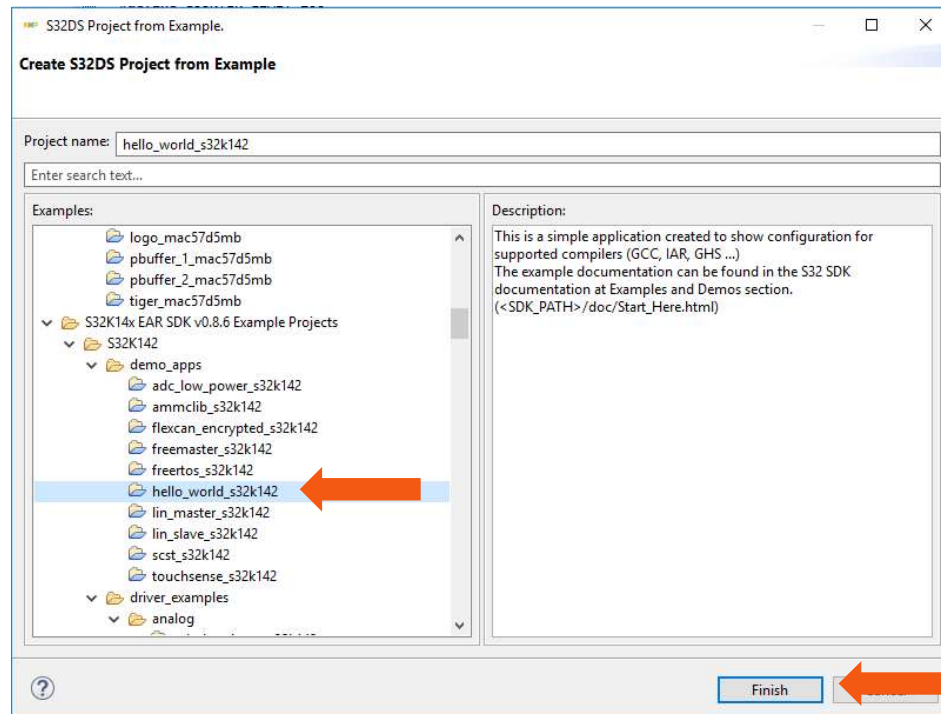
Creating example from SDK

- The S32 Design Studio IDE already includes the Software Development Kit for quickly develop applications on S32K1xx devices.
- To create a project using an example go to File – New –Project



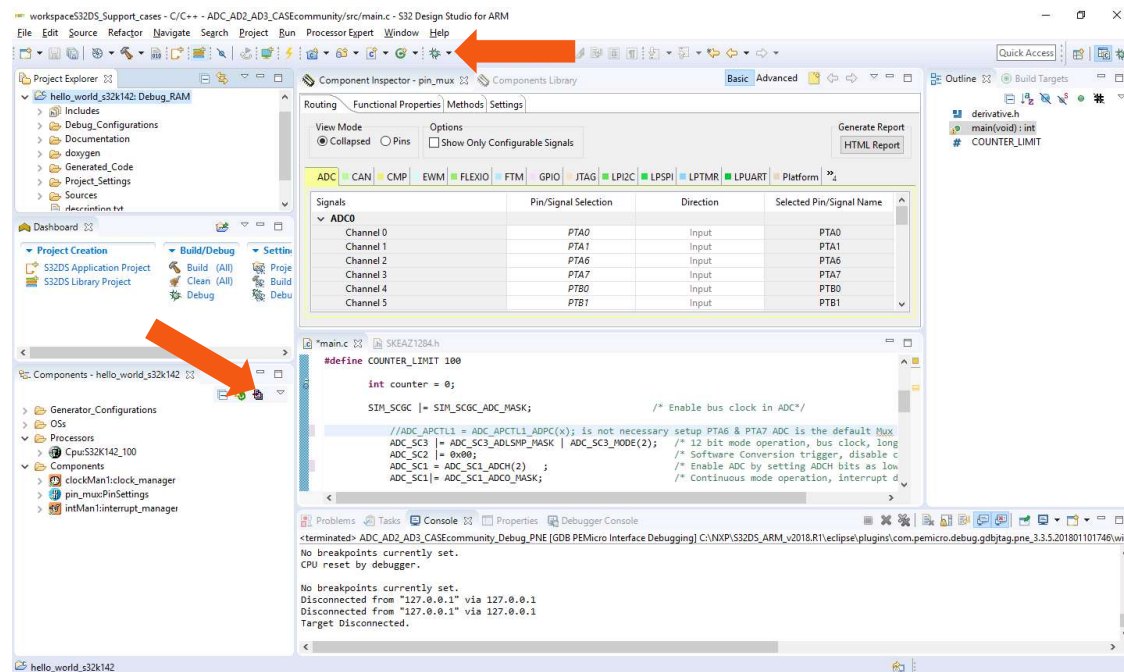
Creating example from SDK

- Go to the S32K14x EAR SDK v0.8.6 Example Projects section and select the example that wants to be used.
- In this example the `hello_world` is selected



Creating example from SDK

- A new project would be created in the workspace. Then click on generate code icon and then on debug, as indicated.



- If run correctly, the LED should start blinking red and green.

Creating example from SDK

- The complete documentation of the SDK can be found in:
C:\NXP\S32DS_ARM_v2018.R1\S32DS\S32SDK_S32K14x_EAR_0.8.6\doc\Start_here.html
- For more information about the use of the SDK go click on the following link for an SDK tranining (add hyperlink once if is online)

DEBUG BASICS



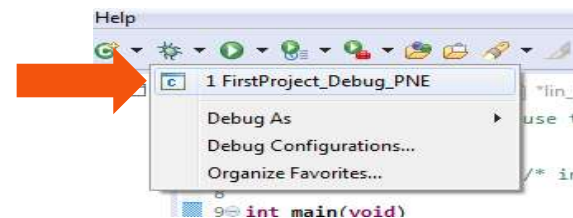
Debug Basics: Starting the Debugger

- Debug configuration is only required once. Subsequent starting of debugger does not require those steps.
- Three options to start debugger:
 - If the “Debug Configuration” has not been closed, click on “Debug” button on bottom right
 - Select Run – Debug (or hit F11)



Note: This method currently selects the desktop target (*project.elf*) and gives an error. Do not use until this is changed.

- Recommended Method: Click on pull down arrow for bug icon and select ..._debug.elf target



Debug Basics: Step, Run, Suspend, Resume

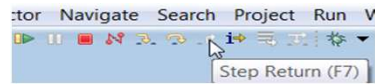
- Step Into (F5)



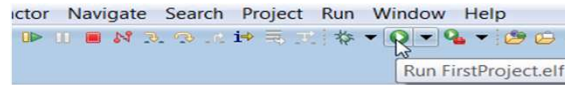
- Step Over (F6)



- Step Return (F7)



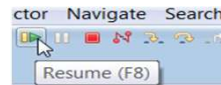
- Run



- Suspend

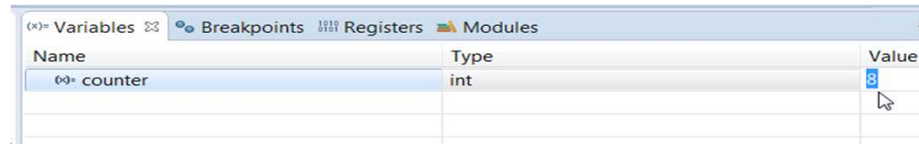


- Resume (F8)



Debug Basics: View & Alter Variables

- View variables in “Variables” tab.
- Click on a value to allow typing in a different value.

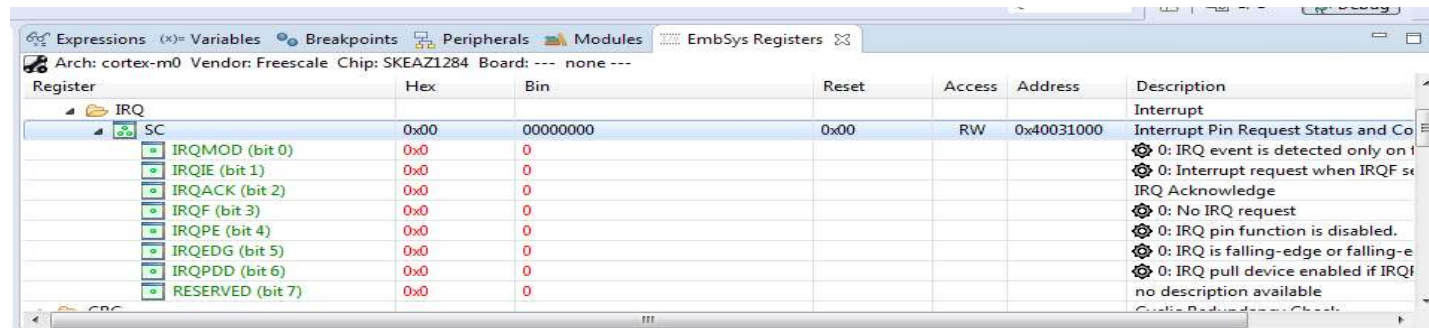


Debug Basics: View & Alter Registers

- View CPU registers in the “Registers” tab
- Click on a value to allow typing in a different value
- View peripheral registers in the EmbSys Registers tab



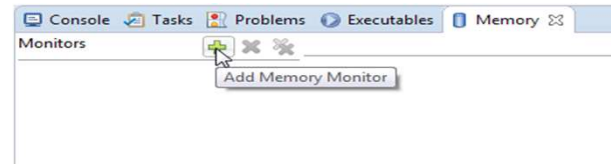
Name	Value
General Registers	
r0	3
r1	5
r2	536866944
r3	8
r4	0



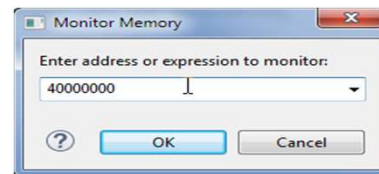
Register	Hex	Bin	Reset	Access	Address	Description
IRQ						Interrupt
SC	0x00	00000000	0x00	RW	0x40031000	Interrupt Pin Request Status and Control Register
IRQMOD (bit 0)	0x0	0				0: IRQ event is detected only on falling edge
IRQIE (bit 1)	0x0	0				0: Interrupt request when IRQF set
IRQACK (bit 2)	0x0	0				IRQ Acknowledge
IRQF (bit 3)	0x0	0				0: No IRQ request
IRQPE (bit 4)	0x0	0				0: IRQ pin function is disabled.
IRQEDG (bit 5)	0x0	0				0: IRQ is falling-edge or falling-edge
IRQPDD (bit 6)	0x0	0				0: IRQ pull device enabled if IRQF set
RESERVED (bit 7)	0x0	0				no description available

Debug Basics: View & Alter Memory

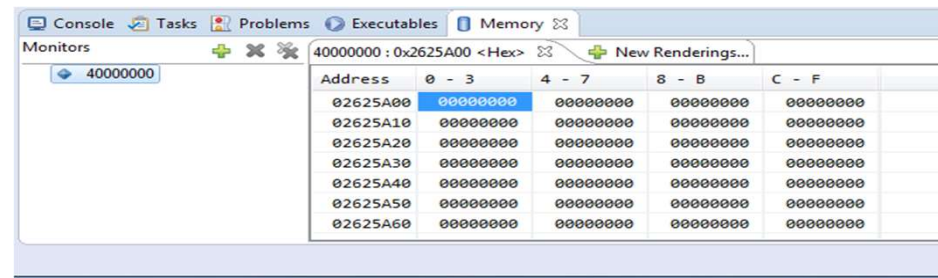
- Add Memory Monitor



- Select Base Address to Start at : 40000000



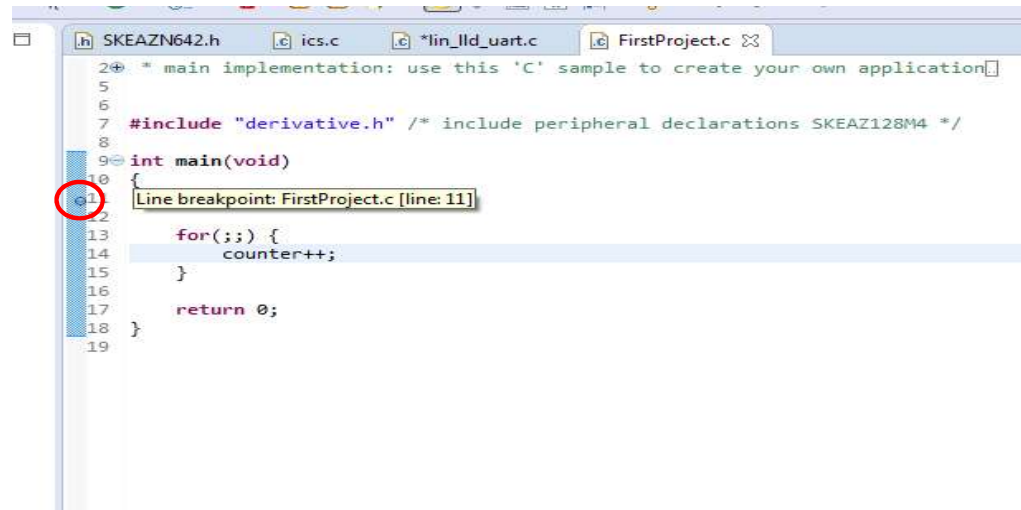
- View Memory



Debug Basics: Breakpoints

Add Breakpoint: Point and Click

- light blue dot represents debugger breakpoint



The screenshot shows a code editor window with several tabs: SKEAZN642.h, ics.c, *lin_llid_uart.c, and FirstProject.c. The code in the editor is as follows:

```
2+ * main implementation: use this 'C' sample to create your own application
5
6
7 #include "derivative.h" /* include peripheral declarations SKEAZ128M4 */
8
9 int main(void)
10 {
11     for(;;) {
12         counter++;
13     }
14     return 0;
15 }
16
17
18
19
```

A light blue dot is placed on the left margin of line 11, indicating a breakpoint. A tooltip box is visible over this dot, containing the text "Line breakpoint: FirstProject.c [line: 11]".

Debug Basics: Reset & Terminate Debug Session

- Reset program counter
- Terminate Ctl+F2()

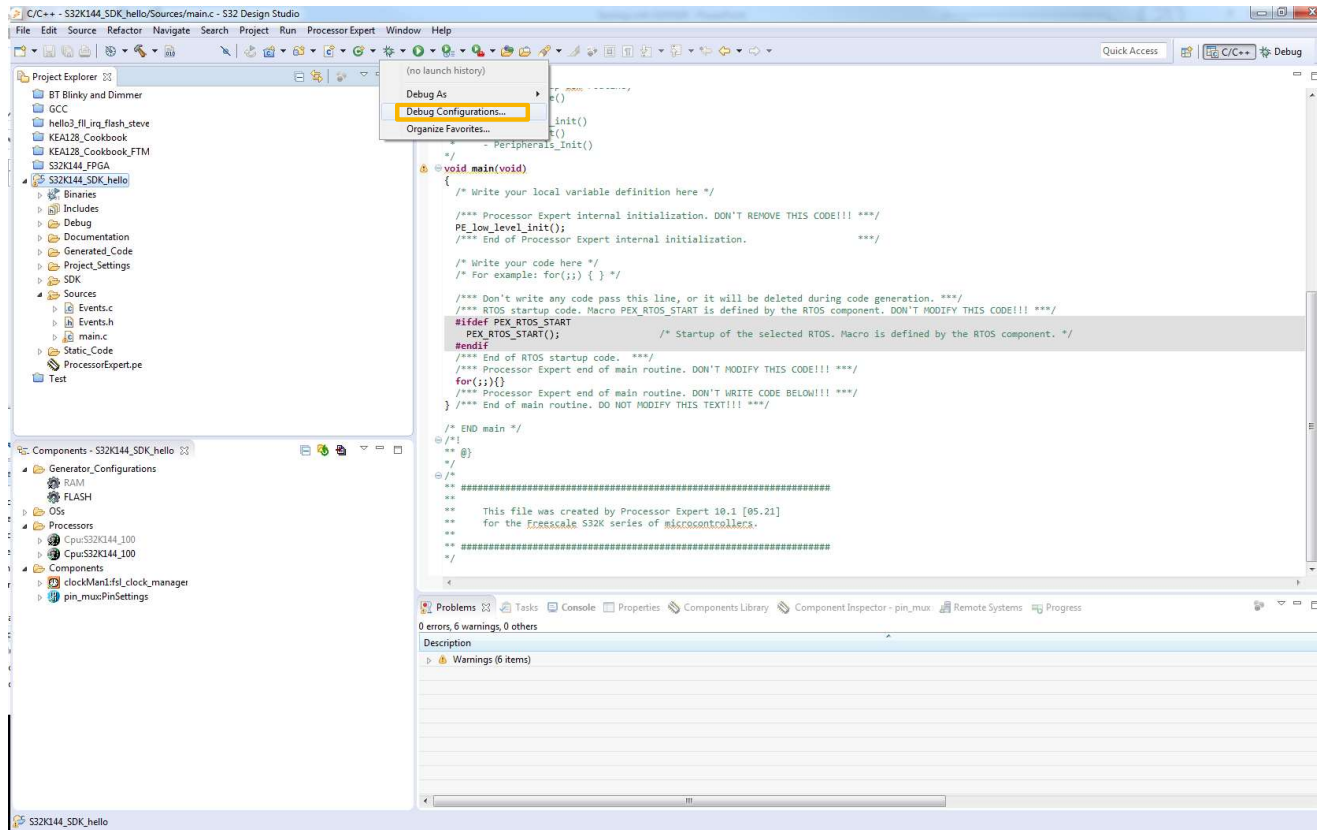


CREATE A P&E DEBUG CONFIGURATION (OPTIONAL)



New P&E debug configuration

- Click in debug configurations

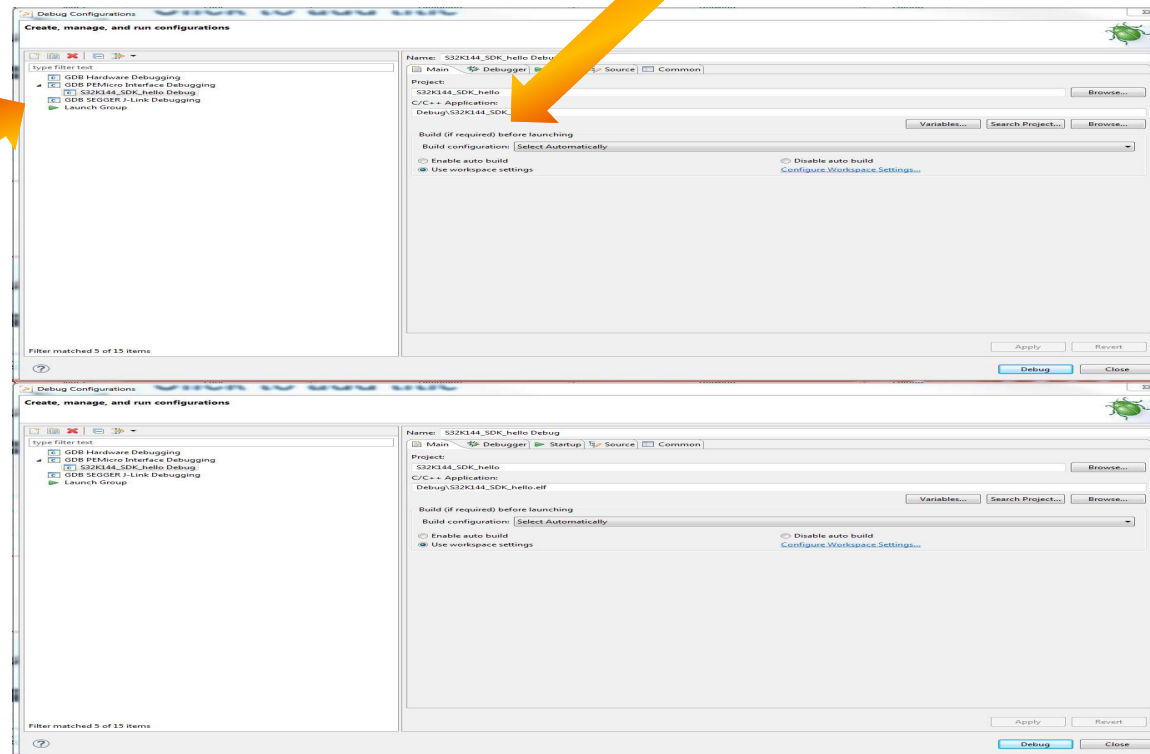


New P&E debug configuration

- Create a new P&E launch configuration

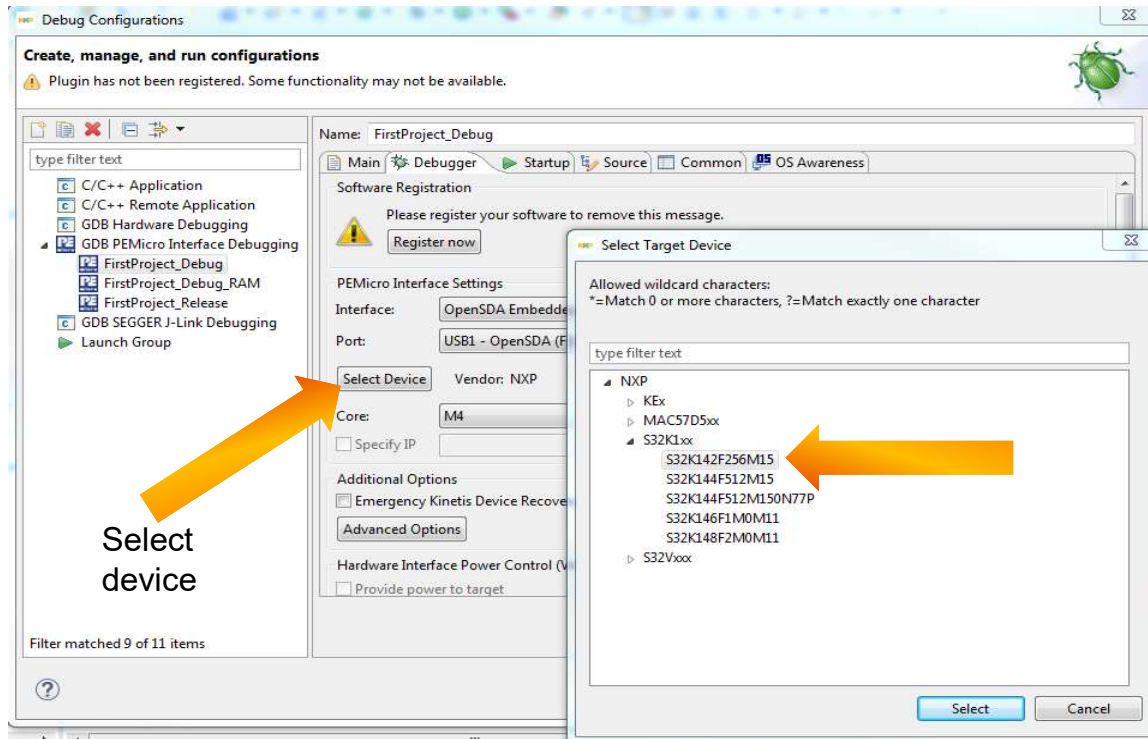
Click on the debugger tab.

Click to create a new P&E launch



New P&E debug configuration

- Select the device



- Click Apply and debug your application

USEFUL LINKS



Useful Links

- [Cookbook application note](#). This application note contains a bunch of simple examples of how to use different peripherals.
- [S32K1xx community](#). Visit this site for request support on the S32K1xx products, you can also look for threads that may contain the answer that you are looking for.



SECURE CONNECTIONS
FOR A SMARTER WORLD