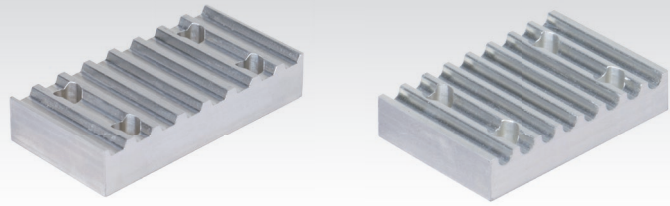
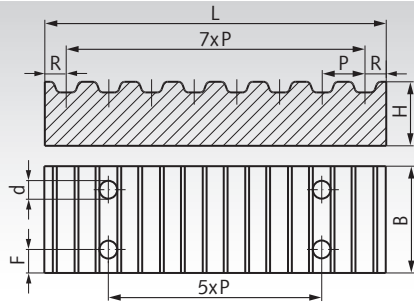


## Clamping Plates for Timing Belts



**Material:** Aluminium similar to EN AW2017A.

The clamping plates are used to connect the belt ends. Practical examples see page 201.

Ordering Details: e.g.: Product No. 160 699 00, Clamping Plate, Pitch T2.5 Width 6 mm

### T-Profile

Product No.	Profile	P mm	Belt Width mm	F mm	d mm	L mm	B mm	H mm	R mm	Weight g
160 699 00	T2,5	2,5	6	4	4,5	20,5	19	5	1,5	5
160 799 00	T2,5	2,5	10	4	4,5	20,5	24	5	1,5	6
162 699 00	T5	5	10	6	5,5	41,8	29	8	3,4	21
162 799 00	T5	5	16	6	5,5	41,8	35	8	3,4	27
162 899 00	T5	5	25	6	5,5	41,8	44	8	3,4	40
162 898 00	T5	5	32	6	5,5	41,8	51	8	3,4	58
162 899 01	T5	5	50	6	5,5	41,8	69	8	3,4	90
164 699 00	T10	10	16	8	9,0	80,0	41	15	5,0	112
164 799 00	T10	10	25	8	9,0	80,0	50	15	5,0	140
164 899 00	T10	10	32	8	9,0	80,0	57	15	5,0	160
164 899 01	T10	10	40	8	9,0	80,0	65	15	5,0	182
164 999 00	T10	10	50	8	9,0	80,0	75	15	5,0	220
164 999 01	T10	10	100	8	9,0	80,0	125	15	5,0	360

### AT-Profile

Product No.	Profile	P mm	Belt Width mm	F mm	d mm	L mm	B mm	H mm	R mm	Weight g
166 699 00	AT5	5	10	6	5,5	41,8	29	8	3,4	21
166 799 00	AT5	5	16	6	5,5	41,8	35	8	3,4	25
166 899 00	AT5	5	25	6	5,5	41,8	44	8	3,4	40
166 898 00	AT5	5	32	6	5,5	41,8	51	8	3,4	58
166 899 01	AT5	5	50	6	5,5	41,8	69	8	3,4	90
168 699 00	AT10	10	16	8	9,0	80,0	41	15	5,0	108
168 799 00	AT10	10	25	8	9,0	80,0	50	15	5,0	134
168 899 00	AT10	10	32	8	9,0	80,0	57	15	5,0	160
168 899 01	AT10	10	40	8	9,0	80,0	65	15	5,0	182
168 999 00	AT10	10	50	8	9,0	80,0	75	15	5,0	220
168 999 01	AT10	10	100	8	9,0	80,0	125	15	5,0	360

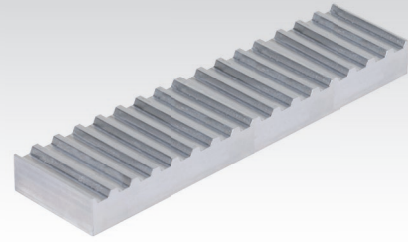
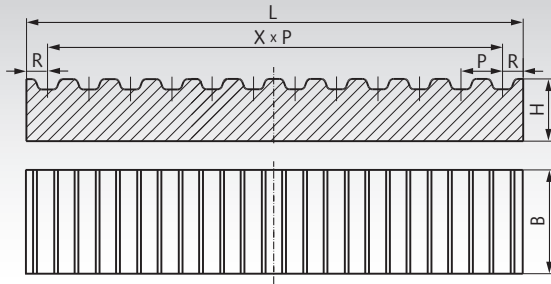
### HTD-Profile

Product No.	Profile	P mm	Belt Width mm	F mm	d mm	L mm	B mm	H mm	R mm	Weight g
171 199 00	3M	3	9	4	4,5	25,0	24	6	2,0	8
171 399 00	3M	3	15	4	4,5	25,0	30	6	2,0	10
173 199 00	5M	5	10	6	5,5	41,8	28	8	3,4	17
173 399 00	5M	5	15	6	5,5	41,8	34	8	3,4	22
173 599 00	5M	5	25	6	5,5	41,8	44	8	3,4	30
175 199 00	8M	8	20	8	9,0	66,0	45	15	5,0	95
175 399 00	8M	8	30	8	9,0	66,0	55	15	5,0	120
175 599 00	8M	8	50	8	9,0	66,0	75	15	5,0	165
175 799 00	8M	8	85	8	9,0	66,0	110	15	5,0	250
177 661 99	14M	14	40	10	11,0	116,0	71	22	9,0	400
177 663 99	14M	14	55	10	11,0	116,0	86	22	9,0	500
177 665 99	14M	14	85	10	11,0	116,0	116	22	9,0	680
177 667 99	14M	14	115	10	11,0	116,0	146	22	9,0	850
177 669 99	14M	14	170	10	11,0	116,0	201	22	9,0	1200

### Inch-Profile

Product No.	Profile	P mm	Belt Width Inch	Belt Width mm	F mm	d mm	L mm	B mm	H mm	R mm	Weight g
180 699 00	XL	5,08	0,25	6,35	6	5,5	42,5	25,5	8	5,5	20
180 899 00	XL	5,08	0,37	9,53	6	5,5	42,5	28,5	8	5,5	23
182 699 00	L	9,525	0,50	12,7	8	9,0	76,6	39,0	15	9,0	108
182 799 00	L	9,525	0,75	19,1	8	9,0	76,6	45,0	15	9,0	125
182 899 00	L	9,525	1,00	25,4	8	9,0	76,6	51,5	15	9,0	143
184 599 00	H	12,7	0,75	19,1	10	11,0	106,9	51,0	22	11,0	295
184 699 00	H	12,7	1,00	25,4	10	11,0	106,9	57,5	22	11,0	330
184 799 00	H	12,7	1,50	38,1	10	11,0	106,9	70,0	22	11,0	385
184 899 00	H	12,7	2,00	50,8	10	11,0	106,9	83,0	22	11,0	456

## Clamping Plate Work Pieces for Timing Belts



**Material:** Aluminium similar to EN AW2017A.

Clamping plates are used to fix belt ends.

**Ordering Details:** e.g.: Product No. 160 799 00L, Clamping Plate Work Piece T2,5, Length 178mm, Width 25mm

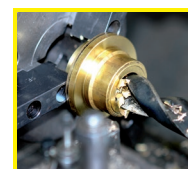
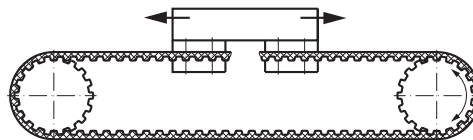
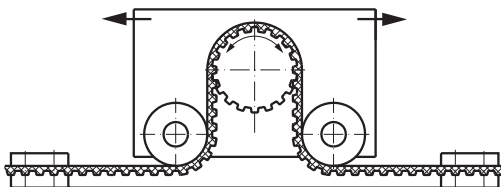
Product No.	Profile mm	P mm	L mm	B mm	H mm	R mm	X x P mm	X* mm	Weight g
160 799 00L	T2,5	2,5	178	25	5	1,5	175	70	60
162 899 00L	T5	5	176,8	45	8	3,4	170	34	165
162 899 01L	T5	5	176,8	70	8	3,4	170	34	255
164 899 00L	T10	10	230	60	15	5	220	22	540
164 999 01L	T10	10	230	125	15	5	220	22	1125
166 899 00L	AT5	5	176,8	45	8	3,4	170	34	160
166 899 01L	AT5	5	176,8	70	8	3,4	170	34	250
168 899 00L	AT10	10	230	60	15	5	220	22	520
168 899 01L	AT10	10	230	125	15	5	220	22	1090
171 399 00L	3M	3	178	30	6	2	174	58	85
173 599 00L	5M	5	176,8	45	8	3,4	170	34	150
175 399 00L	8M	8	226	55	15	5	216	27	455
175 799 00L	8M	8	226	110	15	5	216	27	915
177 663 99L	14M	14	228	90	22	9	210	15	1180
177 667 99L	14M	14	228	150	22	9	210	15	1960

\* Number of complete teeth in the range X x P.

**Usage:** These clamping plate work pieces are used if the standard clamping plates according catalogue page 200 cannot be used for dimensional reason. The clamping plate work pieces have max. production length and optimized width to be most flexible for customer rework. We would appreciate to quote such rework on request with shortest delivery time.

**Reworking:** The belt should be engaged with minimum 6 teeth. Maintain the dimension R. The mounting holes must be placed beside the belt, the belt must not be bored.

## Mounting Examples



**Reworking within  
24h-service possible.  
Custom made parts  
on request.**