

Ferrules

facts & DATA

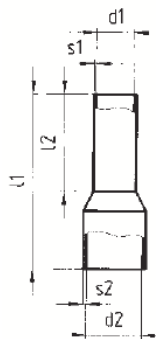
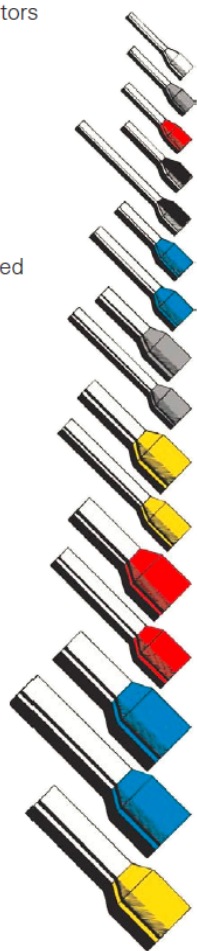
Ferrules with insulating sleeves
for 0.5 to 25 mm² conductors

Materials:

Sleeve:
– Polypropylene,
temperature resistant
up to 105 °C,
tracking resistant

Tube:

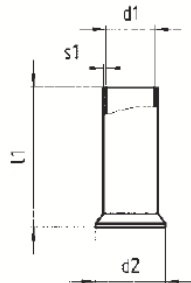
E-Cu, galvanically tin-plated



Cross section mm ² /AWG	Color	Part no.	Std. pack	s ₂	d ₂	l ₁	l ₂	d ₁	s ₁
accord. to DIN 46 228 T4									
0.50/20	norm.	white	06.600.2027.0	100	0.25	2.6	14	8	1.0 0.15
0.75/18	norm.	gray	06.600.2127.0	100	0.25	2.8	14	8	1.2 0.15
1.00/18	norm.	red	06.600.2227.0	100	0.25	3.0	14	8	1.4 0.15
1.50/16	norm.	black	06.600.2327.0	100	0.25	3.5	14	8	1.7 0.15
1.50/16	long	black	06.600.2427.0	100	0.25	3.5	24	18	1.7 0.15
2.50/14	norm.	blue	06.600.2527.0	100	0.25	4.2	14	8	2.2 0.15
2.50/14	long	blue	06.600.2627.0	100	0.25	4.2	24	18	2.2 0.15
4.00/12	norm.	gray	06.600.2727.0	100	0.30	4.8	17	10	2.8 0.20
4.00/12	long	gray	06.600.2827.0	100	0.30	4.8	26	18	2.8 0.20
6.00/10	norm.	yellow	06.600.2927.0	100	0.30	6.3	20	12	3.5 0.20
6.00/10	long	yellow	06.600.3027.0	100	0.30	6.3	26	18	3.5 0.20
10.00/8	norm.	red	06.600.3127.0	100	0.40	7.6	22	12	4.5 0.20
10.00/8	long	red	06.600.3227.0	100	0.40	7.6	28	18	4.5 0.20
16.00/6	norm.	blue	06.600.3327.0	100	0.40	8.8	24	12	5.8 0.20
16.00/6	long	blue	06.600.3427.0	100	0.40	8.8	28	18	5.8 0.20
25.00/4	half long	yellow	06.600.3527.0	50	0.40	11.2	30	18	7.3 0.20

Ferrules without insulating sleeves
for 0.5 to 16 mm² conductors

Material: E-Cu, galvanically tin-plated



accord. to DIN 46 228 T1

0.50/20	norm.	06.600.4027.0	1000	2.1	6	1.0	0.15
0.75/18	norm.	06.600.4127.0	1000	2.3	6	1.2	0.15
1.00/18	norm.	06.600.4227.0	1000	2.5	6	1.4	0.15
1.50/16	norm.	06.600.4327.0	1000	2.8	7	1.7	0.15
2.50/14	norm.	06.600.4427.0	1000	3.4	7	2.2	0.15
4.00/12	norm.	06.600.4527.0	1000	4.0	9	2.8	0.20
6.00/10	norm.	06.600.4627.0	500	4.7	10	3.5	0.20
10.00/8	norm.	06.600.4727.0	500	5.8	12	4.5	0.20
16.00/6	norm.	06.600.4827.0	100	7.5	12	5.8	0.20
25.00/4	norm.	06.600.4927.0	100	9.5	15	7.3	0.20
35.00/2	norm.	06.600.5027.0	100	11.0	18	8.3	0.20