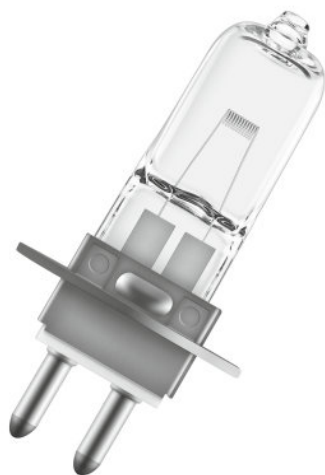


64260 M/185 30W 12V 30/CS 1/SKU



Product features and benefits

- Precise filament alignment with patented quartz pinch technology
- OSRAM HLX lamps provide 10% higher luminous efficacy over standard halogen
- Instant on and nearly constant luminous flux over the life of the lamp
- Dimmable

Areas of application

- Microscopy
- Laboratory & Analysis
- UV Curing
- Fiber Illumination
- Surgical & Dental Overhead
- Club & Disco

Product datasheet

Technical data

General product information

Product Number	54022
Product Name	64260 M/185 30W 12V 30/CS 1/SKU
Application	Projector
LIF Code	M/185

Electrical data

Nominal Wattage	30 W
Nominal Voltage	12 V
Type of Current	AC

Light technical data

Luminous Flux	800 lm
Light Center Length - LCL (in)	0.546 in
Light Center Length - LCL (mm)	14 mm
Color Temperature	3300 K
Color Rendering Index	100
Average Rated Life	50 h

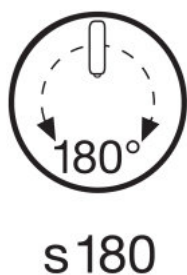
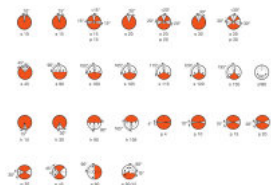
Physical attributes

Base	PG22
Maximum Overall Length (in)	1.560 in
Maximum Overall Length (mm)	40 mm
Length l (in)	1.560 in
Length l (mm)	40 mm
Diameter d (in)	0.354 in
Diameter d (mm)	9.00 mm
Distance a (in)	0.546 in
Distance a (mm)	14 mm
Filament Dimensions Length (in)	0.0510 in
Filament Dimensions Length (mm)	1.3 mm
Filament Dimensions Width (in)	0.101 in
Filament Dimensions Width (mm)	2.6 mm

Additional product data

Operating Position	Any
Class	C (gas)

Product datasheet



Packaging Information

Product number	EAN/UPC	Packaging	Quantity	Outside dimensions l x w x h	Gross weight
54022	4050300099798	Folding box (SKU)	1	1 in x 0.9 in x 2.8 in	
54022	4050300338309	Shipping box (Case)	30	6.2 in x 3.2 in x 5.2 in	0.7 lb

The mentioned product code describes the smallest quantity unit which can be ordered. One shipping unit can contain one or more single products. When placing an order, for the quantity please enter single or multiples of a shipping unit.

Disclaimer

OSRAM does not accept liability for errors, changes and omissions.