

All rights strictly reserved. Reproduction or issue to third parties in any form whatever is not permitted without written authority from the proprietor. Property of Rosenberger Hochfrequenztechnik GmbH & Co. KG.

für diese technische Unterlage behalten wir uns alle Rechte vor (DIN 34)

Formblatt: TCC-FB-15-PE-A4-Montage_D
 Pfad: I:\Creeo-Config\RAMMEN
 Datei: A4_MONTAGE-V2-1.FRM
 Version: 2.1

Dimensions
in mm

ISO-Projektion
Methode 1

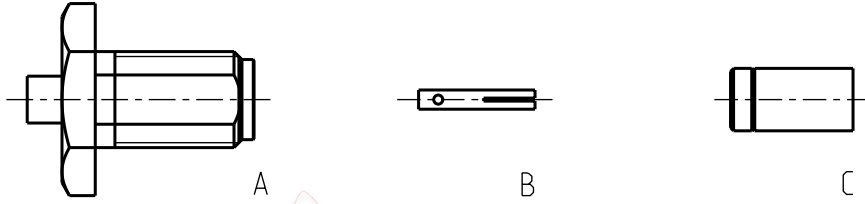
Montageanleitung:

32 A21

Serie: SMA

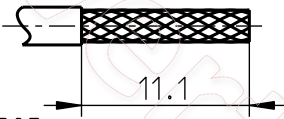
Verbinder gerade fuer flexible und Semi-Rigid-Kabel

Kabelbefestigung:
Innenleiter und Aussenleiter geloetet



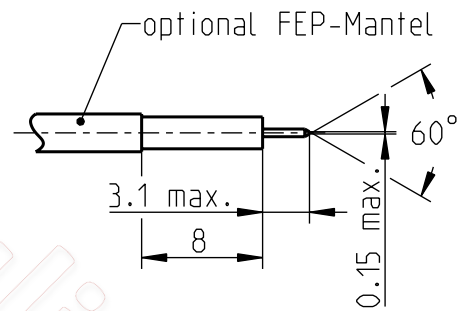
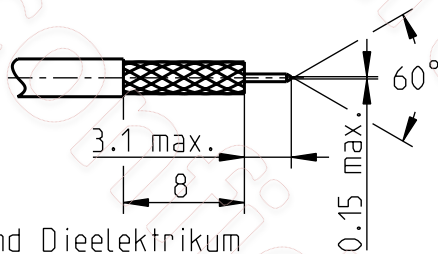
Fuer flexible Kabel:

- 1a) Kabel nach Zeichnung abisolieren.
- 1b) Schirm tauchverzinnen.

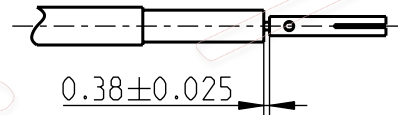


Fuer Semi-Rigid-Kabel:

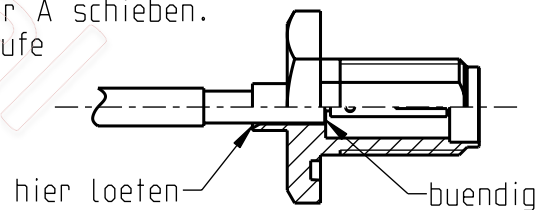
- 1c) Schirm und Dielektrikum nach Zeichnung entfernen und Innenleiter anfasen



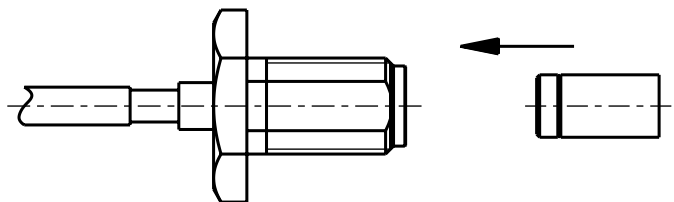
- 2) Innenleiter B auf das Kabel schieben und auf Distanz festloeten.



- 3) Das so vorbereitete Kabel in den Steckerkoerper A schieben. Der Kabelaussenleiter muss buendig mit der Stufe im Steckeraussenleiter sein.
- 4) Den Steckeraussenleiter wie dargestellt mit dem Kabelaussenleiter verloeten



- 5) Isolierteil C in den Steckerkoerper einpressen und Anschlussmaß kontrollieren.



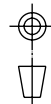
				date	name	scale:	Werkzeuge:		
				drawn 06.12.2002	S_Krautenbac	2:1	Abisolierwerkzeug	
				check. 13.06.2014	E_Schwangler	sheet:	Loetausruestung	
				appr. 13.06.2014	E_Schwangler	1/2	Distanzlehre	
c00	14-0839	B_Wollitzer	13.06.2014	Rosenberger			
b00	13-0521	B_Wollitzer	11.07.2013				
a00	02-0603	M_Perschl	04.05.2004				
rev.	change-no	name	date				
							

All rights strictly reserved. Reproduction or issue to third parties in any form whatever is not permitted without written authority from the proprietor. Property of Rosenberger Hochfrequenztechnik GmbH & Co. KG.

Für diese technische Unterlage behalten wir uns alle Rechte vor (DIN 34)

Formblatt: TCC-FB-17-PE-A4_Montage_E
 Pfad: I:\Creeo-Config\ Rahmen\ Datei: A4_MONTAGE_E-V2-1.FRM
 Version: 2.1

Dimensions in mm



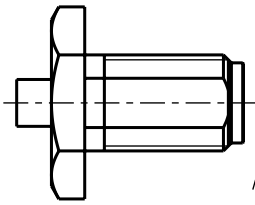
ISO-Projektion Methode 1

Assembly Instruction: 32 A21

Series: SMA

Straight connector for flexible and semi-rigid cables

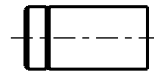
Cable entry:
Center conductor and
Outer conductor soldered



A



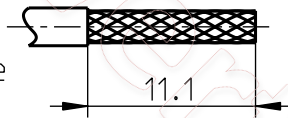
B



C

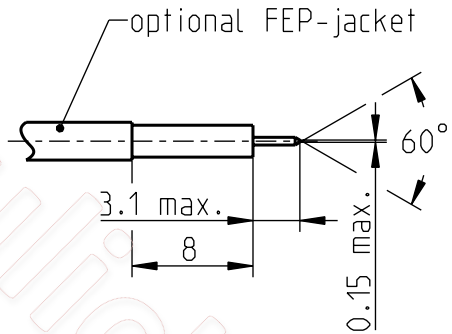
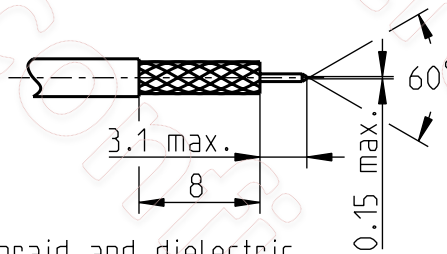
For flexible cables:

- 1a) Prepare the cable acc. to drawing.
- 1b) Tin-dip braid.

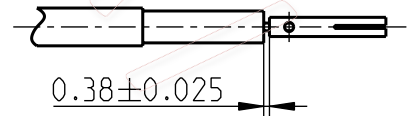


For semi-rigid cables:

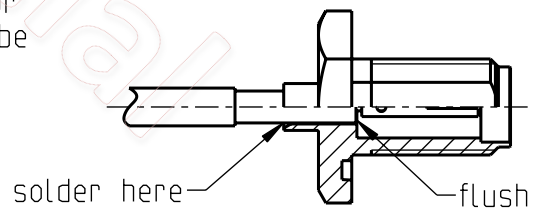
- 1c) Remove braid and dielectric as shown and chamfer center contact.



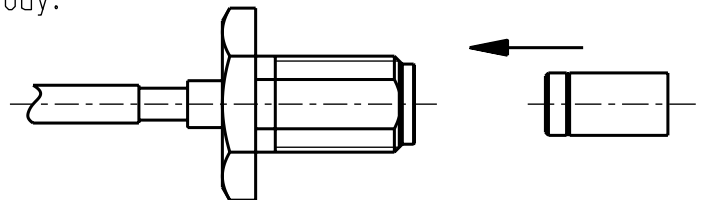
- 2) Push center pin B onto the cable inner conductor and solder maintaining the indicated space.



- 3) Insert the prepared cable into connector body A. Cable outer conductor has to be flush with step of connector body.
- 4) Solder connector body to cable outer conductor as shown.



- 5) Press insulator C into connector body. Check interface dimensions.



				date	name	scale:
				drawn 06.12.2002	S_Krautenbac	2:1
				check. 13.06.2014	E_Schwangler	sheet:
				appr. 13.06.2014	E_Schwangler	2/2
c00	14-0839	B_Wollitzer	13.06.2014			
b00	13-0521	B_Wollitzer	11.07.2013			
a00	02-0603	M_Perschl	04.05.2004			
rev.	change-no	name	date			

Rosenberger

Tools:

Stripping tool
Solder equipment
Solder gauge
....
....
....
....