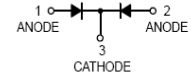
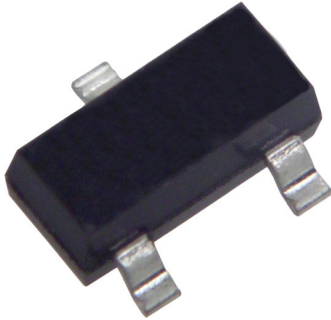
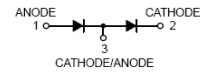


Surface Mount Switching Diode

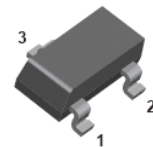
multicomp PRO



BAV23C-7-F



BAV23S-7-F



SOT-23

Features:

- Fast Switching Speed
- Surface Mount Package Ideally Suited for Automatic Insertion
- For General Purpose Switching Applications
- High Conductance

Applications:

- High Speed Switching Application

Maximum Ratings:

Ratings at 25°C unless otherwise specified.

Parameter	Symbol	Value	Unit
Repetitive peak reverse voltage	V_{RRM}	250	V
Working peak reverse voltage DC reverse voltage	V_{RWM} V_R	200	V
RMS reverse voltage	$V_{R(RMS)}$	141	V
Forward continuous current (Max.)	I_{FM}	400	mA
Peak forward surge current at $t=1\mu s$ at $t=100\mu s$ at $t=10ms$	I_{FSM}	9 3 1.7	A
Repetitive peak forward surge current	I_{FRM}	625	mA
Power dissipation	P_D	350	mW
Thermal resistance junction to ambient air	$R_{\theta JA}$	357	°C/W
Operating and storage temperature range	T_J, T_{STG}	-65 to +150	°C

Newark.com/multicomp-pro
Farnell.com/multicomp-pro
Element14.com/multicomp-pro

multicomp PRO

Surface Mount Switching Diode

multicomp PRO

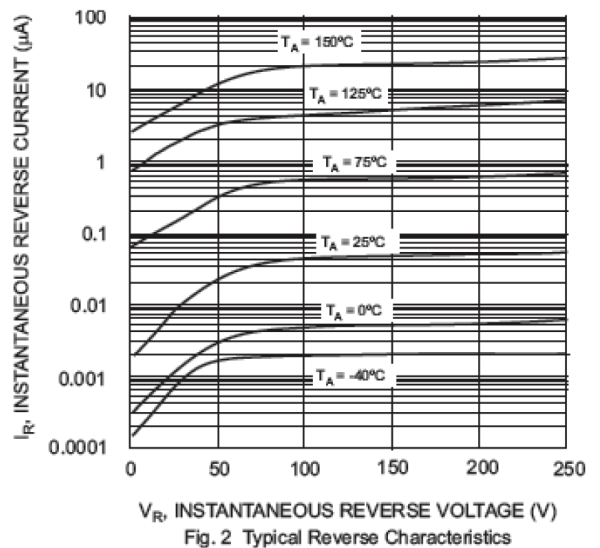
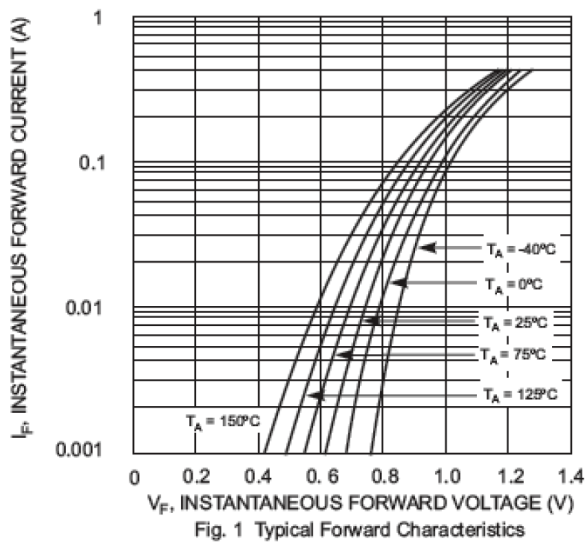
Electrical Characteristics:

Ratings at 25°C unless otherwise specified

Parameter	Symbol	Test conditions	Min.	Max.	Unit
Reverse breakdown voltage	$V_{(BR)}$	$I_R = 100\mu A$	250	-	V
Reverse leakage current	I_R	$V_R = 200V$	-	100	nA
Forward voltage	V_F	$I_F = 100mA$ $I_F = 2000mA$	-	1 1.25	V
Total capacitance	C_T	$V_R = 0V$ $f = 1MHz$		5	pF
Reverse recovery time	t_{rr}	$I_F = I_R = 30mA$ $I_{rr} = 0.1 \times I_R$ $R_L = 100\Omega$	-	50	nS

Typical Characteristics:

$T_A = 25^\circ C$ unless otherwise specified



multicomp PRO

Surface Mount Switching Diode

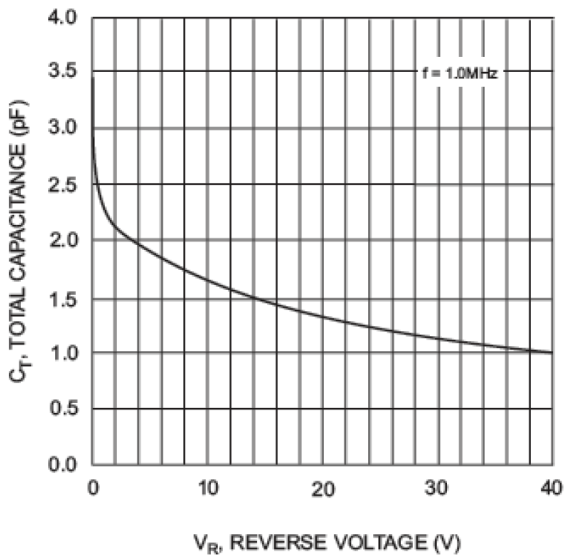


Fig. 3 Typical Capacitance vs. Reverse Voltage

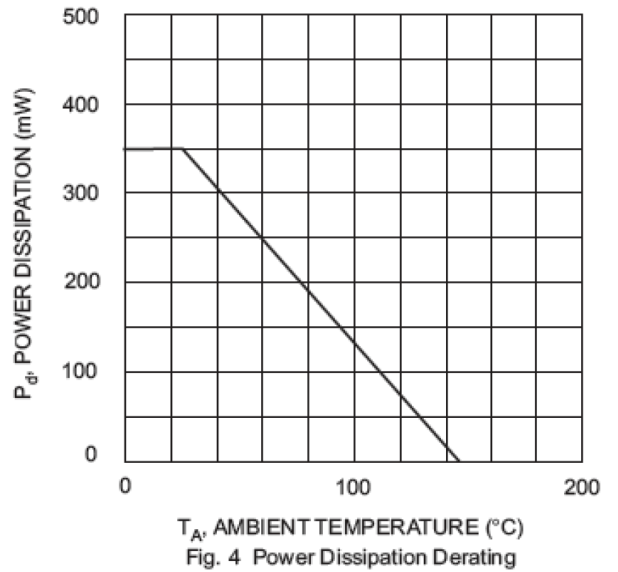
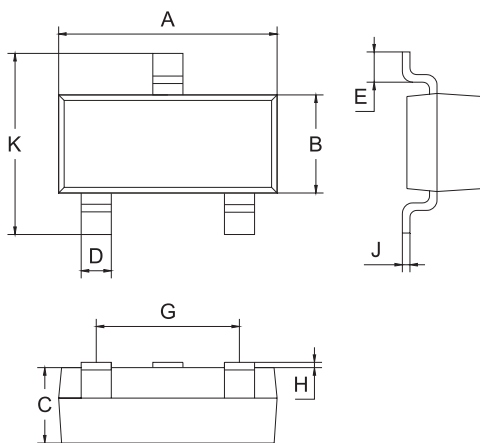


Fig. 4 Power Dissipation Derating

Package Outline:

Plastic surface mounted package



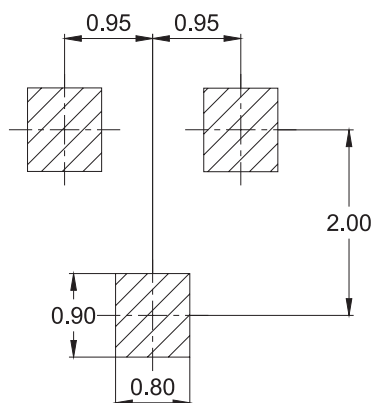
SOT-23		
Dim.	Min.	Max.
A	2.7	3.1
B	1.1	1.5
C	1 Typ.	
D	0.4 Typ.	
E	0.35	0.48
G	1.8	2
H	0.02	0.1
J	0.1 Typ.	
K	2.2	2.6

Dimensions : Millimetres

Surface Mount Switching Diode

multicomp PRO

Soldering Footprint:



Dimensions : Millimetres

Package Information:

Device	Package	Shipping
BAV23C-7-F & BAV23S-7-F	SOT-23	3,000 / Tape & Reel

Part Number Table

Description	Part Number
Surface Mount Switching Diode	BAV23C-7-F
	BAV23S-7-F

Important Notice : This data sheet and its contents (the "Information") belong to the members of the AVNET group of companies (the "Group") or are licensed to it. No licence is granted for the use of it other than for information purposes in connection with the products to which it relates. No licence of any intellectual property rights is granted. The Information is subject to change without notice and replaces all data sheets previously supplied. The Information supplied is believed to be accurate but the Group assumes no responsibility for its accuracy or completeness, any error in or omission from it or for any use made of it. Users of this data sheet should check for themselves the Information and the suitability of the products for their purpose and not make any assumptions based on information included or omitted. Liability for loss or damage resulting from any reliance on the Information or use of it (including liability resulting from negligence or where the Group was aware of the possibility of such loss or damage arising) is excluded. This will not operate to limit or restrict the Group's liability for death or personal injury resulting from its negligence. Multicomp Pro is the registered trademark of Premier Farnell Limited 2019.

Newark.com/multicomp-pro
Farnell.com/multicomp-pro
Element14.com/multicomp-pro

multicomp PRO