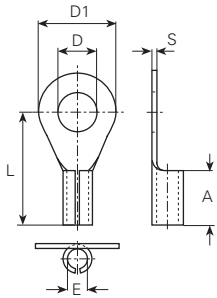


Werkstoff/Matière/Material
 .6 = Messing/laiton/brass

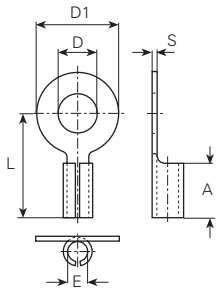
■ = Oberflächen/Surface/Surface-plating
 Seite/page/page 5.011



mm ²	AWG	für Bolzen pour borne for stud mm	DIN	øD mm	E mm	øD1 mm	L mm	A mm	S mm	Artikelnummer Numéro d'article Part-No.
0.5-1	22-18	M2.5	A2.6x1.4	2.8	1.4	5.5	9.5	3.5	0.4	3001a.6 ■
	22-18	M3	A3.0x1.4	3.2	1.4	6	10	3.5	0.5	3003a.6 ■
1.5	16	M4	*	4.3	1.8	8	13	5	0.5	3005a.6 ■
1.5-2.5	16-14	M3.5	A3.5x2.3	3.7	2.3	7	12	5	0.5	3021a.6 ■
	16-14	M4	A4.0x2.3	4.3	2.3	8	14	6	0.8	3025a.6 ■

Werkstoff/Matière/Material
 .4 = Kupfer/cuivre/copper
 .6 = Messing/laiton/brass

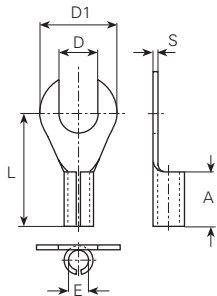
■ = Oberflächen/Surface/Surface-plating
 Seite/page/page 5.011



mm ²	AWG	für Bolzen pour borne for stud mm	DIN	øD mm	E mm	øD1 mm	L mm	A mm	S mm	Artikelnummer Numéro d'article Part-No.
1	18	M3	*	3.2	1.5	7	11.5	6.5	0.5	3004a.6 ■
	18	M4	*	4.3	1.5	7	11.5	6.5	0.5	3023a.6 ■
2.5	14	M4	*	4.3	2.3	9	11.5	6	0.5	3007a.6 ■
16	6	M22		22.9	6	35	35	10	1.5	3030a.4 ■

Werkstoff/Matière/Material
 .6 = Messing/laiton/brass

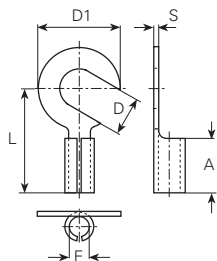
■ = Oberflächen/Surface/Surface-plating
 Seite/page/page 5.011



mm ²	AWG	für Bolzen pour borne for stud mm	DIN	øD mm	E mm	øD1 mm	L mm	A mm	S mm	Artikelnummer Numéro d'article Part-No.
0.5-1	22-18	M3	C3.0x1.4	3.2	1.4	6	10	3.5	0.5	3003c.6 ■
1.5-2.5	16-14	M3.5	C3.5x2.3	3.7	2.3	7	12	5	0.5	3021c.6 ■

Werkstoff/Matière/Material
 .6 = Messing/laiton/brass

■ = Oberflächen/Surface/Surface-plating
 Seite/page/page 5.011



mm ²	AWG	für Bolzen pour borne for stud mm	DIN	øD mm	E mm	øD1 mm	L mm	A mm	S mm	Artikelnummer Numéro d'article Part-No.
2.5	14	M4	*	4.3	2.3	9	11.5	6	0.5	3007e.6 ■