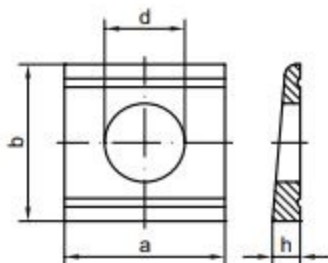
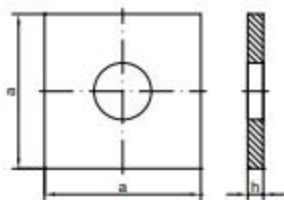


Vierkantscheiben/Keilscheiben



Nenngröße = für Schrauben		DIN 436 (Pk C) 0%			DIN 434 (Pk C) 8%			DIN 435 (Pk C) 14%			DIN 6917 (Pk C) 14%			DIN 6918 (Pk C) 8%		
M	Ww	d	a	h	d	a/b	h	d	a/b	h	d	a/b	h	d	a/b	h
8	5/16"				9	22/22	3,8/2	9	22/22	4,6/1,5						
10	3/8"	11	30	3	11	22/22	3,8/2	11	22/22	4,6/1,5	13	26/30	6,2/2	13	26/30	4,9/2,5
12	7/16"	13,5	40	4	13,5	26/30	4,9/2,5	13,5	26/30	6,2/2						
	1/2"	13,5	40	4	13,5	26/30	4,9/2,5	13,5	26/30	6,2/2						
14																
16	5/8"	17,5	50	5	17,5	32/36	5,9/3	17,5	32/36	7,5/2,5	17	32/36	7,5/2,5	17	32/36	5,9/3
18																
20	3/4"	22	60	5	22	40/44	7/3,5	22	40/44	9,2/3	21	40/44	9,2/3	21	40/44	7/3,5
22	7/8"	24	70	6	24	44/50	8/4	24	44/50	10/3	23	44/50	10/3	23	44/50	8/4
24		26	80	6	26	56/56	8,5/4	26	56/56	10,8/3	25	56/56	10,8/3	25*	56/56	8,5/4
	1"	26	80	6	26	56/56	8,5/4	26	56/56	10,8/3						
27		30	90	6	30	56/56	8,5/4	30	56/56	10,8/3	28	56/56	10,8/3	28*	56/56	8,5/4
30	1 1/8"	33	95	6	33	62/62	9/4	33	62/62	11,7/3	31	62/62	11,7/3	31*	62/62	9/4
33	1 1/4"	36	100	6												
36	1 3/8"	39	110	8							37	68/68	12,5/3	37*	68/68	9,4/4
39	1 1/2"	42	125	8							Kennzeichnung:					
42		45	135	8							DIN	Neigung	Anzahl Rillen			
45	1 3/4"	48	140	8							434	8%	2			
48		52	150	10							435	14%	1			
52	2"	56	160	10							6917	14%	1			
											6918	8%/5%		2/0 - „Form A“		