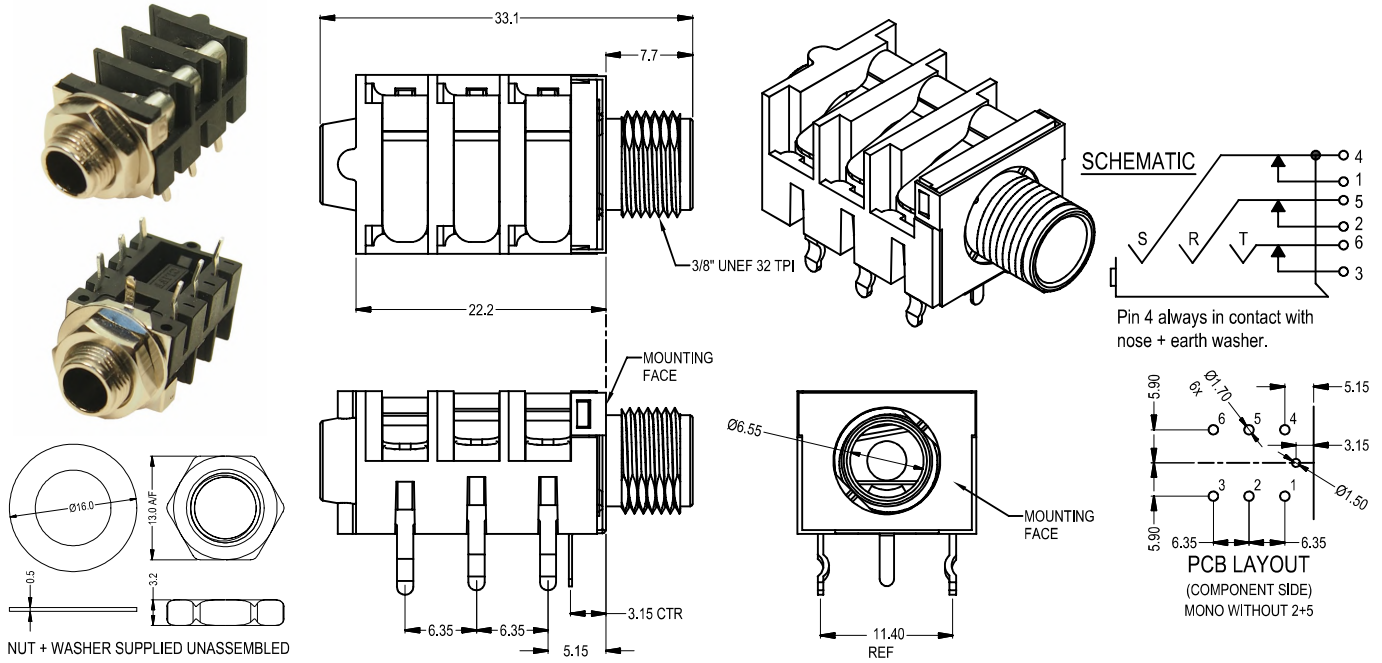


CLIFF

METAL NOSE 6.35mm JACK SOCKET S1CM

This 6.35mm Stereo jack socket has a metal nose and front RFI earth washer. The body material is PBT UL V0 with a zinc alloy nose, and the contact material is brass / nickel plated. It has kinked PC legs for easy board assembly and is supplied with a separate washer and nut.



Part No: **FCR11650EW - S1CM/BBB Stereo**

SPECIFICATION

Designed to receive both mono and stereo 1/4" jack plugs. The body is moulded from tough FR PBT (UL E349642). Contacts are brass alloy, silver plated for long life, and are self cleaning for superior performance and reliability. The thread at the front is made from durable diecast zinc alloy and is nickel plated. The jack is supplied with a fitted, plated ferrous RFI screen with a PCB pin for direct connection to the PCB.

Supplied with a metal nut and washer, (not pre-fitted to save assembly time). The standard version FCR11650EW is stereo with 3xBBB contacts. A mono version **FCR11655EW - S1CM/BNB** can also be supplied.

TECHNICAL DATA

Electrical

Withstand Voltage : 2000V DC Min
 Maximum current: 5 amp
 Nominal Contact Resistance: <50mΩ

Materials

Housing: PBT E349642
 Contacts: Cliff Brass alloy Ag plated

Mechanical

Operating Temp: -10°C to +70°C
 Solderability: 95% coverage (min.)
 Test Temperature: 230°C +/- 10°C
 Test Time: 3 sec +/- 0.5 sec
 Insertion Force: <5 NF
 Removal Force: >10NF