

Hand brake valve

RE 66148/07.09
Replaces: 07.03

1/4

Type LT 08

Component series 2X



HAD 6881/02

Table of contents

Content	Page
Features	1
Function, Symbol	2
Technical data	2
Unit dimensions	3
Order details	4

Features

- Pipe line installation
- Integrated maximum pressure relief
- Good fine control
- Mechanically operated

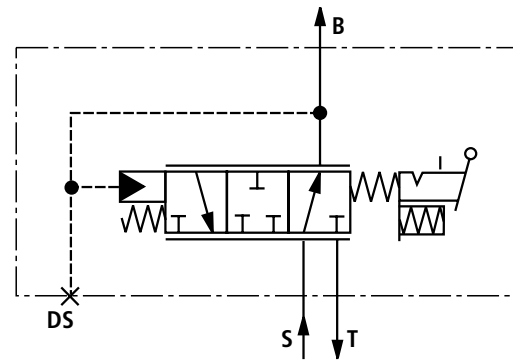
Function, Symbol

The hand brake valve is designed as a direct operated 3-way pressure reducing valve and is designed for use in spring loaded braking systems; other applications, however are also possible.

In position 1 (see Unit dimensions) of the hand lever the through flow from S to B is open. The spring load braking system is, therefore opened with the pressure applied in B. In this position the maximum defined pressure in B is limited according to type of the valve 25, 40, 60, 100 or 125 bar independent of the pressure at input S.

By moving the hand lever into the detent position 2, the pressure from B to T is decreased directly proportional to the travel of the lever and the operating speed. The pressure at port B can be finely controlled with hand lever. The spring load braking system is activated.

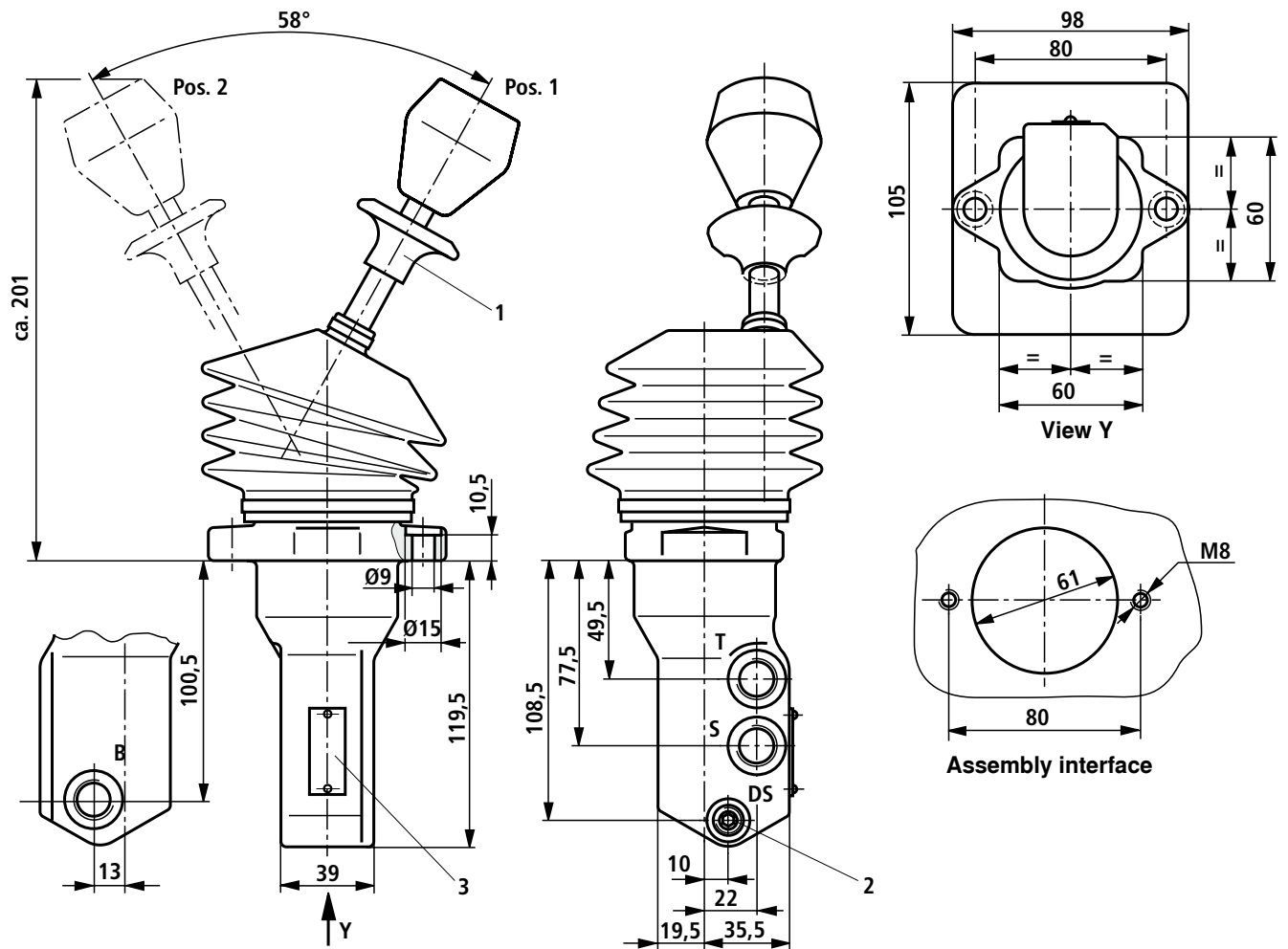
The operating lever is released by lightly lifting the release ring (1).



Technical data (for applications outside these parameters, please consult us!)

Supply pressure, max.	bar	200
Tank pressure, max.	bar	0.5
Pressure fluid		Mineral oil (HL, HLP) to DIN 51524
Pressure fluid temperature range	°C	-20 to +80
Viscosity range	mm ² /s	2.8 to 380
Maximum permitted contamination level of hydraulic fluid Purity class to ISO 4406 (c)		Class 20/18/15, we recommend for this a filter with a minimum retention rate of $\beta_{10} \geq 75$
Weight	kg	3.2

Unit dimensions (Dimensions in mm)



- 1 Release ring
- 2 Connection possibility for a pressure switch
- 3 Name plate

Pos. 1 Travel operation

Pos. 2 Brake position, detented

	Port	d ₁	d ₂	t ₁	t ₂	
02	S, T, B	M16x1.5	24.3	12	1	
	DS	M12x1.5	18	12	1	

Order details

LT	08	MM	A	-2X/	/02	M	*
----	----	----	---	------	-----	---	---

Component series 20 to 29
(20 to 29: unchanged installation
and connection dimensions)

= 2X

Brake ventilation pressure

Pressure stage 25 bar	= 025
Pressure stage 40 bar	= 040
Pressure stage 60 bar	= 060
Pressure stage 80 bar	= 080
Pressure stage 100 bar	= 100
Pressure stage 125 bar	= 125

Further details in clear text

Sealing material

NBR seals, suitable for
mineral oil (HL, HLP) to DIN 51524

Caution!

Observe sealing compatibility
of the hydraulic fluid used!!

M =

Connection thread

02 =

Metric thread

Bosch Rexroth AG
Hydraulics
Zum Eisengießer 1
97816 Lohr am Main, Germany
Phone +49 (0) 93 52 / 18-0
Fax +49 (0) 93 52 / 18-23 58
info.brm-mc@boschrexroth.de
www.boschrexroth.com

© This document, as well as the data, specifications and other information set forth in it, are the exclusive property of Bosch Rexroth AG. It may not be reproduced or given to third parties without its consent. The data specified above only serve to describe the product. No statements concerning a certain condition or suitability for a certain application can be derived from our information. The information given does not release the user from the obligation of own judgment and verification. It must be remembered that our products are subject to a natural process of wear and ageing.