



Datenblatt - Fiche technique - Data sheet

**11.04.5310**

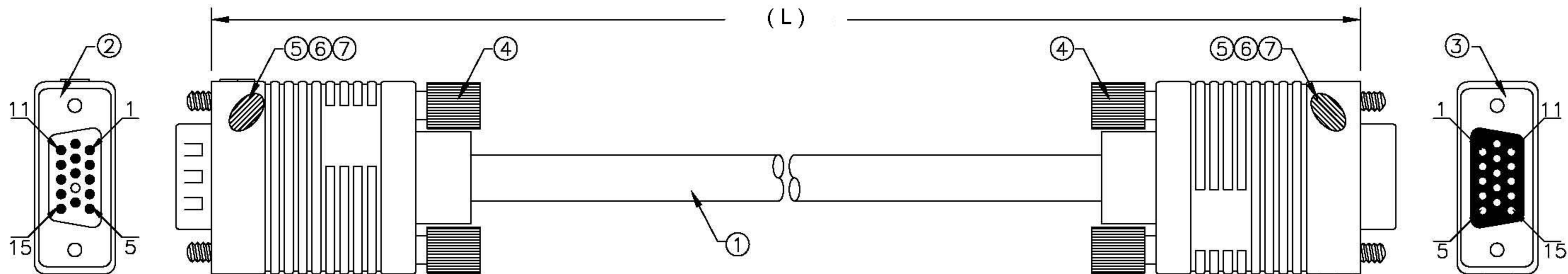


ROLINE VGA-Kabel HD15 ST - BU, 10,0m

ROLINE Câble HD15 M/HD15 F, 10,0m

ROLINE HQ VGA Cable, HD15, M/F, 10 m

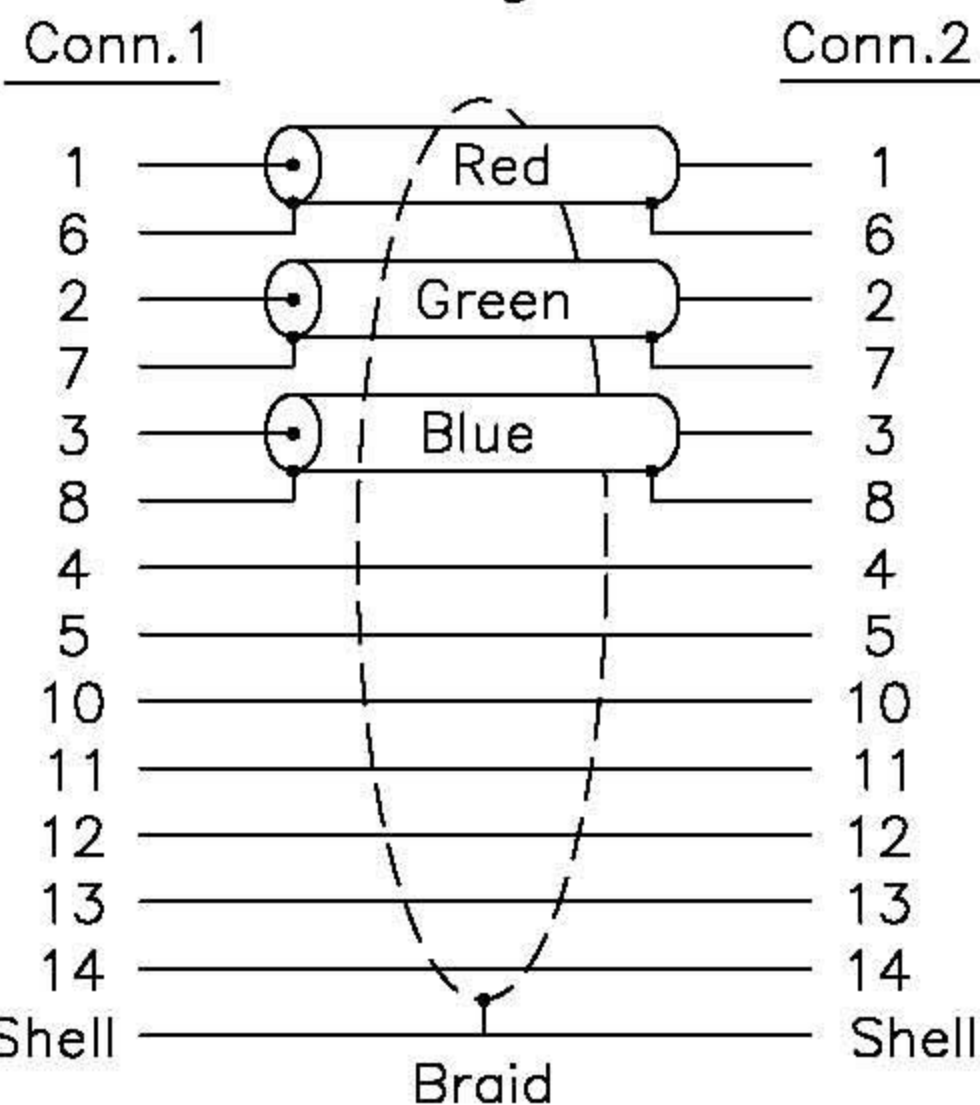
REV	DATE	REV.DIMENSION	DRAW	CHECK	APPROVE
A	06.05.17	NEW DRAWING	XHJ		
B	06.11.01	CANCEL 0.7CM COPPER FOIL(ECO:200611003-5)	XHJ		



Conn.1 HD15 Male Molding

Pin Assignment

Conn.2 HD15 Female Molding



Electronic Test :

1. 100% Test (Open, Short, Miss Wire)
2. Contact Resistance : 5 ohm max
3. Insulation Resistance : 10M ohm min
4. Hi-Pot : 300V DC/10ms

Item no.	(L)
11.04.5310	10000 ± 50mm
11.04.5320	20000 ± 80mm
11.04.5330	30000 ± 110mm
11.04.5350	50000 ± 140mm

NO.	P/N	DESCRIPTION	Q'TY	UNIT
⑦	R87-04005	Copper Foil Solder W=3.2cm	12/100	m
⑥	R90-45006	Outside Molding 45P PVC PMS:Black 3U2X	44/1000	kg
⑤	R91-01001	Inside Molding PE	9.5/1000	kg
④	R86-20043	Screw 40.5mm #4-40UNC Color:Black 3U2X	4	pcs
③	R71-15010	HD15P Female Solder Type Insulation Blue	1	pcs
②	R71-15016	HD15P Male Solder Type (Missing 9P) Insulation Blue	1	pcs
①	61-10611	UL2919 28AWG*3COAX(S)+28AWG*7C+AL/MY+DW+Braid Jacket Color PMS:Black 3U2X OD:8.0±0.15	2	m

ROTRONIC		RoHS COMPLIANT			
		DESCRIPTION	M42MF-2M10A-BK		
HS CODE		CUSTOMER P/N			
UPC		MODEL NO.			
DRAW.		DWG NO.	REV.	B	
CHECK.		DATE.	08.01.18	SCALE.	NONE
APP.		SIZE.	A4	UNIT.	mm
			SHEET	1/1	