

Brushless 6 click

PID: MIKROE-2847

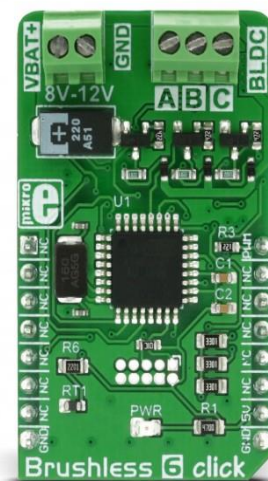
Brushless 6 click is designed to drive a three-phase sensorless, brushless motor, also known as the BLDC motor. The motor rotation is controlled by receiving driving commands via the incoming PWM signal. This click board fully controls the rotation of the BLDC motor by utilizing the onboard MCU [ATmega8A](#), an 8-bit MCU from [Microchip](#). The onboard MCU outputs are not adequate to power on the coils of the BLDC motor directly, so this MCU is used to control the power circuitry, instead. This circuit consists of 6 MOSFET transistors, used to switch the power from an external power source to the appropriate stator coils.

The advantages of the BLDC motors over the other types of DC motors are many. Thanks to their contactless design, BLDC motors last longer and because of the superior rotational speed and torque properties, BLDC motors are widely used for high-speed, lightweight applications such as the drive motors for drones, electronic cooling equipment, small house appliances, robotics and similar applications. The Brushless 6 click provides an easy and elegant solution for driving BLDC motors.

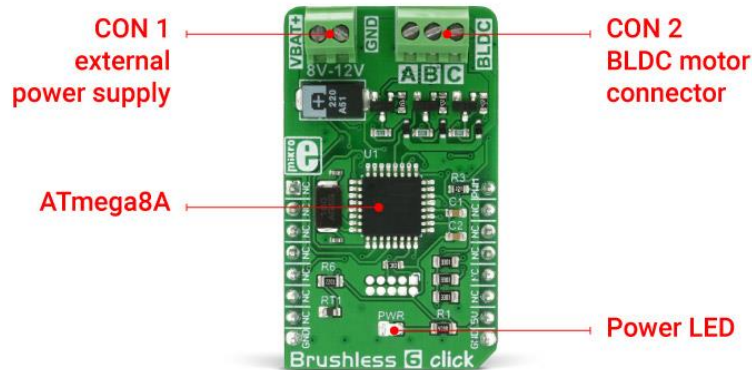
How does it work?

DC brushless motors, also known as BLDC motors, are becoming very popular recently, due to the fact that they have many advantages over some other types of DC motors. The term "brushless" actually means that the rotor of the BLDC motor doesn't have any surfaces which make the electrical

contact with the stator because the rotor uses only permanent magnetic materials.



The main control logic component of the Brushless 6 click is the ATmega8A MCU from Microchip. It uses a 50Hz PWM signal at one of the input pins, routed to the PWM pin of the mikroBUS™ socket. The duty cycle of the incoming PWM signal is decoded by the onboard ATmega8A MCU so that a certain pulse width range is used to set speed and direction of the rotation. The information about how to properly decode the controller PWM signal can be found in the **PWM signal control** table, below. MikroElektronika demo application provided with the Brushless 6 click board uses simplified functions to calibrate and set the speed and the direction of the BLDC motor, so it can be used as the reference for the future design.



Since the MCU output can't be used to drive heavier loads directly, the stator coils are driven through the MOSFET transistors network, controlled by the MCU. The electrical circuit that powers the coils is also known as the "inverter" circuit because it provides both positive and negative voltages from the connected external power supply. The motor can be connected via the onboard connector, which provides an easy and secure connection. There is also a power connector, used to connect the external power supply, up to 12V.

Specifications

Type	DC
Applications	The Brushless 6 click can be used to drive BLDC motors for a wide range of applications, such as the BLDC motors for drones, electronic cooling equipment, small home appliances, toys...
On-board modules	ATmega8A, an 8-bit MCU from Microchip.
Key Features	Complete driving and control of the BLDC sensorless motors in both directions. Easy to use PWM signal control through one wire.
Interface	PWM
Input Voltage	5V
Click board size	M (42.9 x 25.4 mm)

Pinout diagram

This table shows how the pinout on **Brushless 6 click** corresponds to the pinout on the mikroBUS™ socket (the latter shown in the two middle columns).

Notes	Pin					Pin	Notes
	NC	1	AN	PWM	16	PWM	PWM control
	NC	2	RST	INT	15	NC	
	NC	3	CS	RX	14	NC	
	NC	4	SCK	TX	13	NC	
	NC	5	MISO	SCL	12	NC	
	NC	6	MOSI	SDA	11	NC	
	NC	7	3.3V	5V	10	+5V	Power Supply
Ground	GND	8	GND	GND	9	GND	Ground

Brushless 6 click electrical specifications

Description	Min	Type	Max	Unit
External input voltage range	8	12	12	V
Output current		1		A

Onboard settings and indicators

Label	Name	Default	Description
PWR	Power LED	-	Power LED indicator
CON1	Connector	-	External power supply connector
CON2	Connector	-	BLDC motor connector

PWM signal control

PWM duty cycle (f = 50Hz)	Command
1ms - 1.5ms	CCW speed (max speed to 0, counterclockwise)
1.5ms	No rotation
1.5ms - 2ms	CW speed (0 to max speed, clockwise)

Note: There is a "dead zone" area around the pulse width of 1.5mS, to compensate for the accuracy of the used controller stick or some other similar control device.