

Part number

CX 01 J8M



Brief description:

male insert, housing for RJ45 connectors, for 1 RJ45 crimp connector, part number CX 8 J6M, 1 module, modular units series MIXO

Product description	
Model	male insert
Version	housing for RJ45 connectors for 1 RJ45 crimp connector, part number CX 8 J6M
Product type	
Family	MIXO series, customizable inserts
Size	1 module
Technical data	
Operating temperature range (min, max)	-40°C ... +70°C
IP degree of protection	IP20 without enclosure, IP65/IP66/IP68/IP69 with enclosure
Further technical details	
Characteristics according to EN 61984	1A 50V 0,8kV 3
Insulation resistance	≥ 10 GΩ
Rated voltage according to ULCSA	50V
UL 94 flammability rating	V-0
Weight	10,00 g

Approvals / Standards	
Quality mark	EAC
Conformity	Not applicable
General ordering information	
EAN13 code	8015747206181
Tariff number	85369095
Packaging Information	
Sub-packaging description	Plastic bag
Sub-packaging quantity	1 Pcs
Sub-packaging EAN barcode	8015747206358

Part number

CX 8 J6M



Brief description:

RJ45 male connector, crimp terminal, with 8 data contacts

Product description	
Model	male insert
Series	for CX 01 J8M insert
Product type	8 data contacts
Family	MIXO series, customizable inserts
Further technical details	
Characteristics according to EN 61984	1A 50V 0,8kV 3
UL 94 flammability rating	V-0
Weight	4,70 g

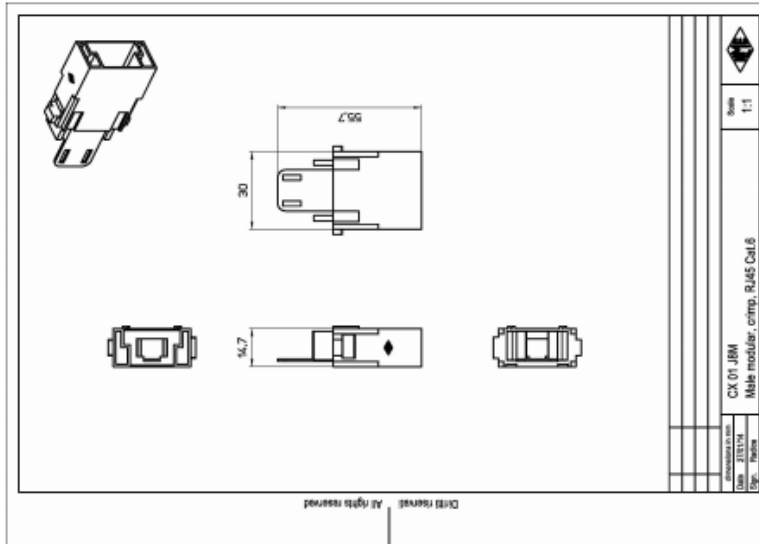
Approvals / Standards	
Conformity	Not applicable
General ordering information	
EAN13 code	8015747206204
Tariff number	85369095
Packaging Information	
Sub-packaging description	Plastic bag
Sub-packaging quantity	1 Pcs
Sub-packaging EAN barcode	8015747206372

Part number

CX 01 J8M



Catalogue drawings

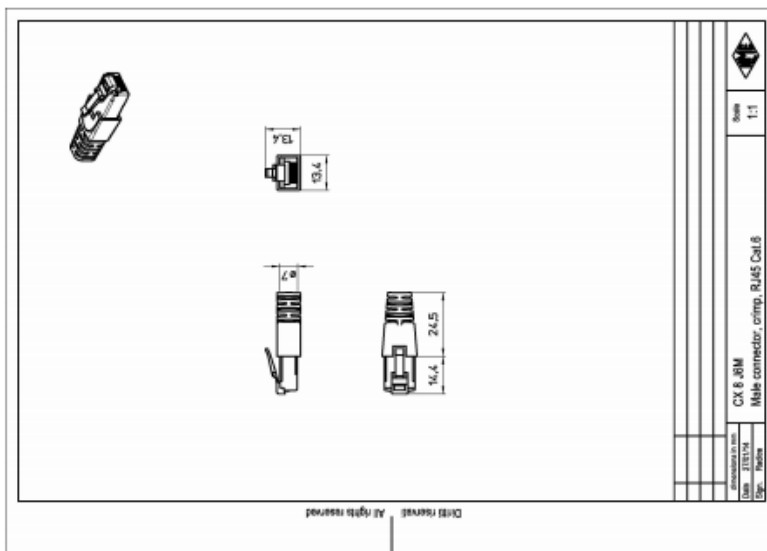


Part number

CX 8 J6M



Catalogue drawings



Notes

the modular inserts must be installed in suitable frames which in turn are installed in traditional housings or COB panel support