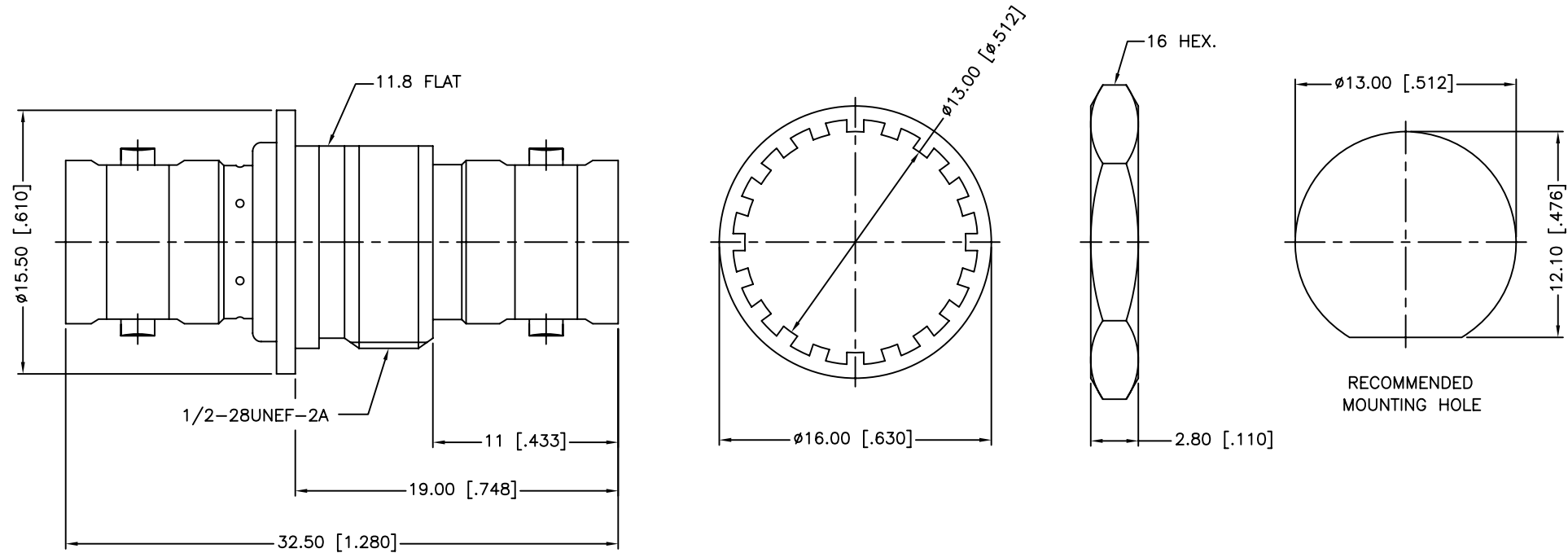


REV.	DATE	ECR NO.	DESCRIPTION
A	01/07/04	XXXXXX	UPDATE DRAWING FORMAT
B	06/22/11	2186	ADD NOTE 1, 2, 3



1. IMPEDANCE: 75 OHMS
2. FREQUENCY RANGE: 0-1 GHz
3. MAX. PANEL THICKNESS: 4.5MM

QTY	DESCRIPTION	MATERIAL	FINISH
1	HEX NUT	BRASS	NICKEL
1	LOCK WASHER	BRASS	NICKEL
1	CONTACT PIN	PHOSPHOR BRONZE	GOLD
1	INSULATOR	DELIN	NATURAL
1	BODY	BRASS	NICKEL

UNLESS OTHERWISE SPECIFIED DIMENSIONS ARE IN MILLIMETERS. DIMENSIONS IN [ ] ARE IN INCHES AND FOR CUSTOMER REFERENCE ONLY.

UNLESS OTHERWISE SPECIFIED TOLERANCES FOR MILLIMETERS ARE:  
0.5 - 8mm ± 0.20mm  
8 - 30mm ± 0.40mm  
30 - 120mm ± 0.50mm

UNLESS OTHERWISE SPECIFIED TOLERANCES FOR INCHES ARE:  
.020 - .315 = ± 0.007"  
.315 - 1.180 = ± 0.015"  
1.180 - 4.724 = ± 0.020"

DO NOT SCALE DRAWING

APPROVALS	DATE
DRAWN M.ZHANG	06/22/11
CHECKED	
ISSUED	
SHEET 1 OF 1	
CAD FILE	C:/CONNEX/112440.DWG

<h1>Amphenol Connex</h1>			
PART DESCRIPTION <b>BNC FEMALE TO FEMALE BULKHEAD ISOLATED ADAPTOR - 75 OHM</b>			
PART NO. <b>112440</b>			
DWG. NO.	112440.DWG	REV.	B
SIZE	A	SCALE	NA