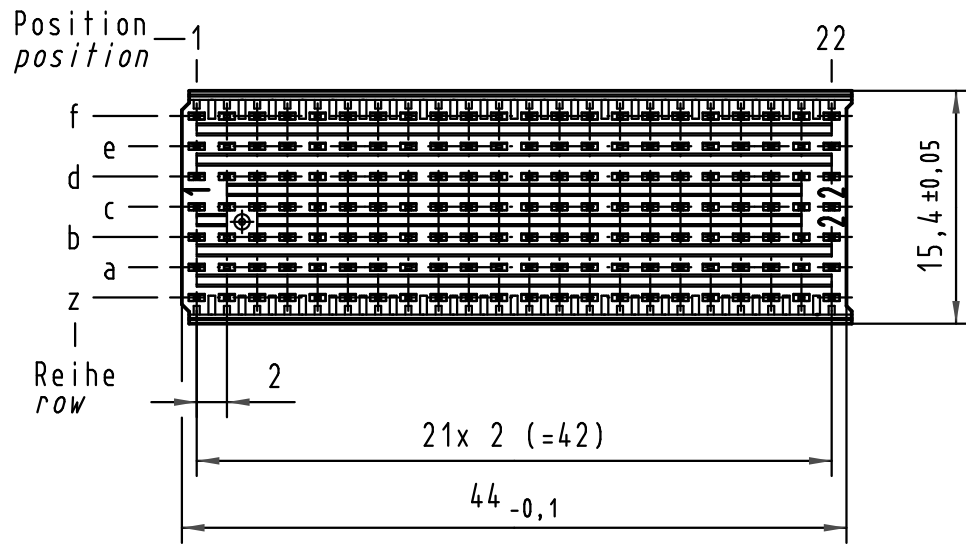
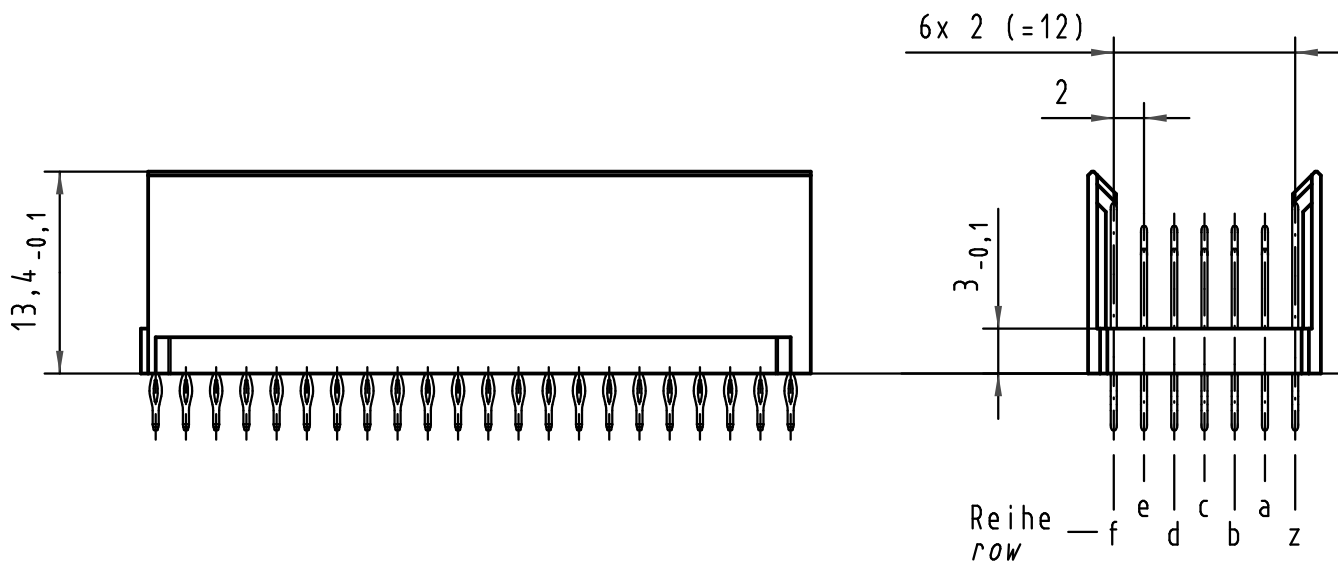
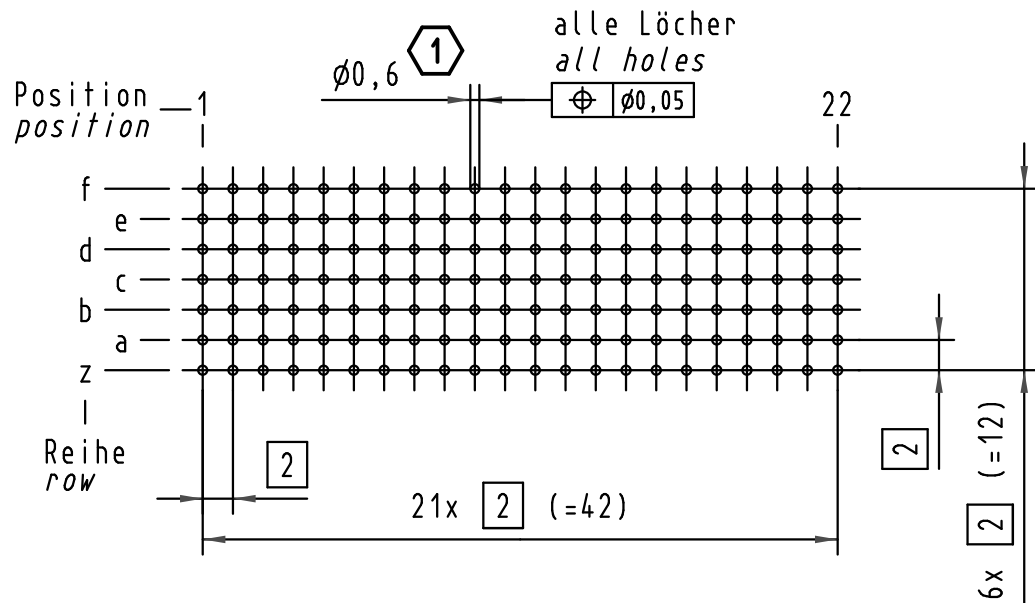


Alle Rechte vorbehalten/ All rights reserved

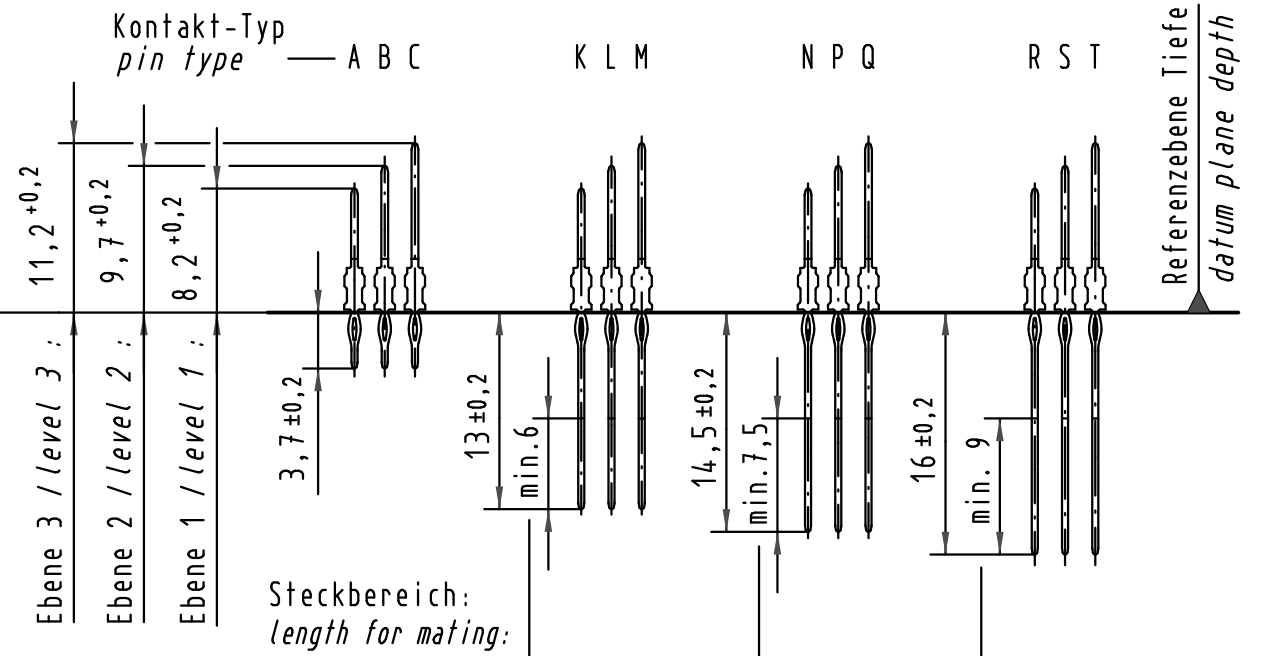


Lochbild  
board drillings

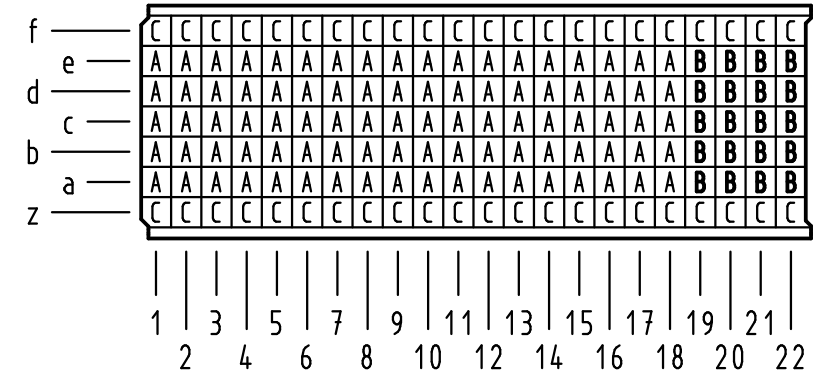


**Kontakt-Maße**  
**contact dimensions**

(Längen der Steck- und Anschlußseite gelten für eingepreßte Steckverbinder)  
(mating and termination length of contacts apply to pressed in connectors)



**Kontaktbelegung**  
**contact loading**



1  
Empfohlener Lochaufbau und  
weitere Informationen siehe: DS 17 00 110 0101  
recommended configuration of plated through holes  
and further information see: DS 17 00 110 0101

17 04 154 4204	S4
17 04 154 2204	2
17 04 154 1204	1
Bestell-Nr. part-no.	Anforderungsstufe performance level 1

	All Dimensions in mm Original Size DIN A 3		Techn. Character.			Nicht tolerierte Maß/Free size tolerances IEC 61076-4-101	
	Mod.	Dat.	Name	Dat.	Name	Maßstab/Scale	har-bus HM Messerleiste Typ B-22 154pol., Anschlußlänge 3,7mm har-bus HM male connector type B-22 154pol., termination length 3,7mm
35965	07.01.10	Hage.	Insp.	02.10.98	HL.	2:1	
34337	13.06.07	Hage.	Stand.				
28489	19.03.01	HL.	HARTING Electronics GmbH & Co. KG			TB 17 04 154 x204	
24606			D-32339 ESPELKAMP				
						Sub.	Blatt/ page