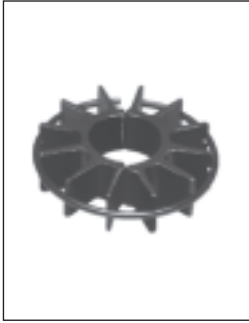


Kleinkühlkörper  
für TO 5 u. ä.

Heatsinks  
for TO 5 and similar

Dissipateurs pour  
TO 5 et similaires

C



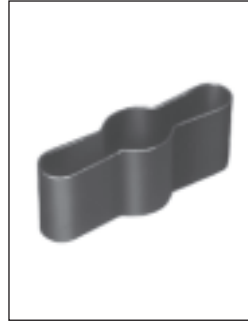
**KK 55**  
62 K/W



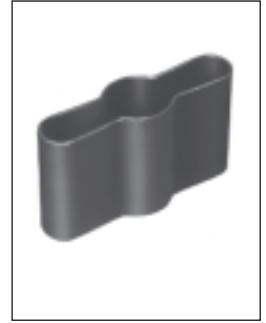
**KK 510**  
38 K/W



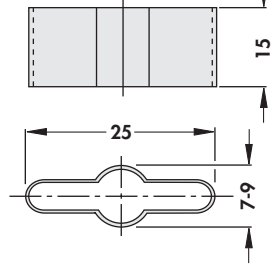
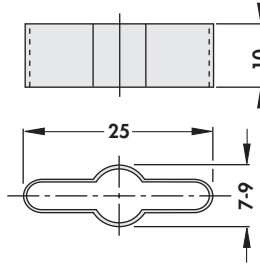
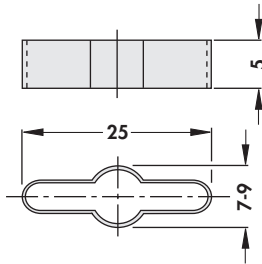
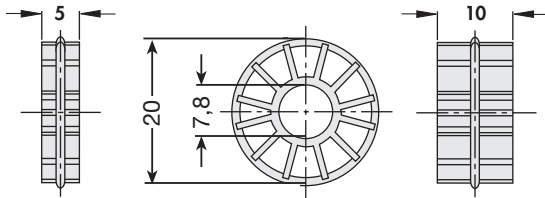
**KF 5/5**  
57 K/W



**KF 5/10**  
46 K/W



**KF 5/15**  
40 K/W

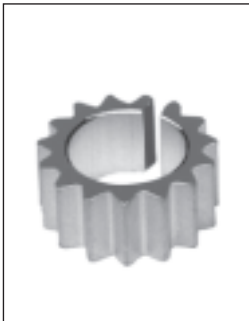


**Material:** Aluminium, schwarz eloxiert  
**Material:** Aluminium, black anodised  
**Matière:** Aluminium, anodisée noire

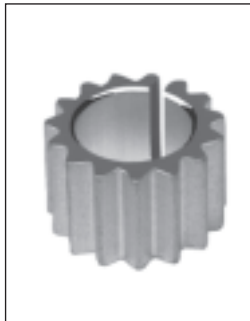
**Material:** Messing  
**Oberfläche:** geschwärzt

**Material:** Brass  
**Surface:** blackened

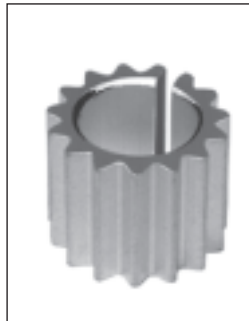
**Matière:** Laiton  
**Finition:** noirci



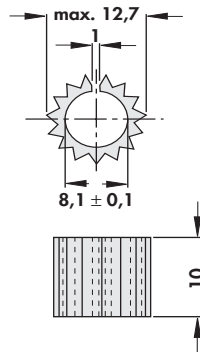
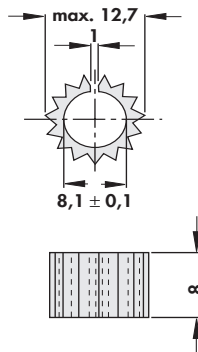
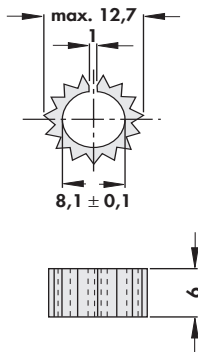
**SKK 56**  
63 K/W



**SKK 58**  
55 K/W



**SKK 510**  
44 K/W



**Material:** Aluminium  
**Oberfläche:** gebeizt

**Material:** Aluminium  
**Surface:** etched

**Matière:** Aluminium  
**Finition:** décapé

Andere Farben auf Anfrage

Other colours on request

Autres couleurs sur demande

C 17

Aufsteckkühlkörper  
Präzisionsfassungen für TO 5  
Montagescheiben  
Kühlkörper für Transistoren im Plastikgehäuse

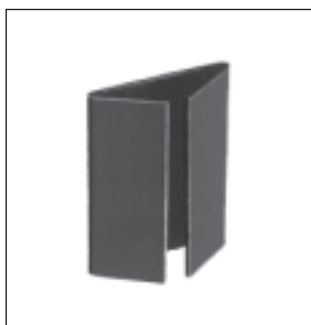
Attachable heatsinks  
High precision sockets for TO 5  
Mounting pads  
Heatsinks for transistors in plastic case

Dissipateurs enfichables → C 11 – 16  
Supports de précision pour TO 5 → F 27 – 31  
Entretoises → E 23 – 25  
Dissipateurs pour transistors en boîtier plastique → C 5 – 10

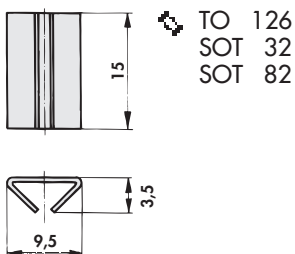
Kleinkühlkörper  
für TO 5 u. ä.

Heatsinks  
for TO 5 and similar

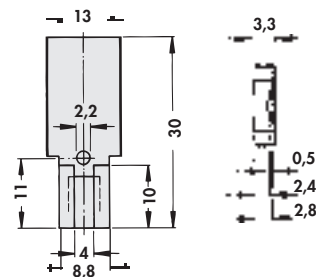
Dissipateurs pour  
TO 5 et similaires



**KK 92**  
80 K/W



**KK 32**  
60 K/W



**Material:** Federbronze CuSn6  
**Oberfläche:** geschwärzt

**Material:** Special bronze CuSn6  
**Surface:** blackened

**Matière:** Bronze spécial CuSn6  
**Finition:** noirci

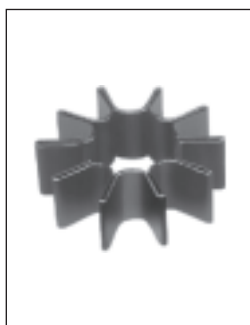
C

**Kleinkühlkörper  
für TO 5, TO 18 o. ä.**

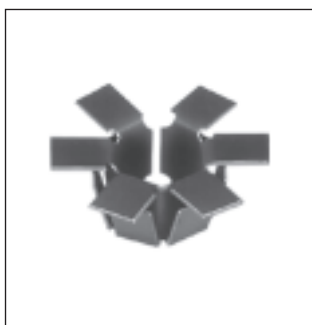
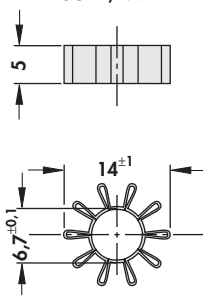
**Heatsinks  
for TO 5, TO 18 or similar**

**Dissipateurs pour  
TO 5, TO 18 ou similaires**

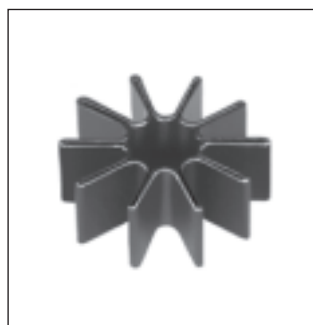
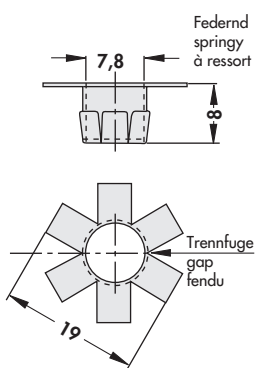
C



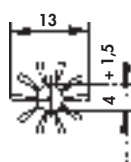
**KK 504**  
TO 5  
65 K/W



**KK 562 GS**  
TO 5  
60 K/W



**KK 184**  
TO 18  
65 K/W



**Material:** Federbronze CuSn6  
KK562GS CuZn15  
**Dicke:** 0,25 mm  
KK562GS 0,3 mm  
**Oberfläche:** geschwärzt

**Material:** Special bronze CuSn6  
KK562GS CuZn15  
**Thickness:** 0.25 mm  
KK562GS 0.3 mm  
**Surface:** blackened

**Matière:** Bronze spécial CuSn6  
KK562GS CuZn15  
**Épaisseur:** 0,25 mm  
KK562GS 0,3 mm  
**Finition:** noirci