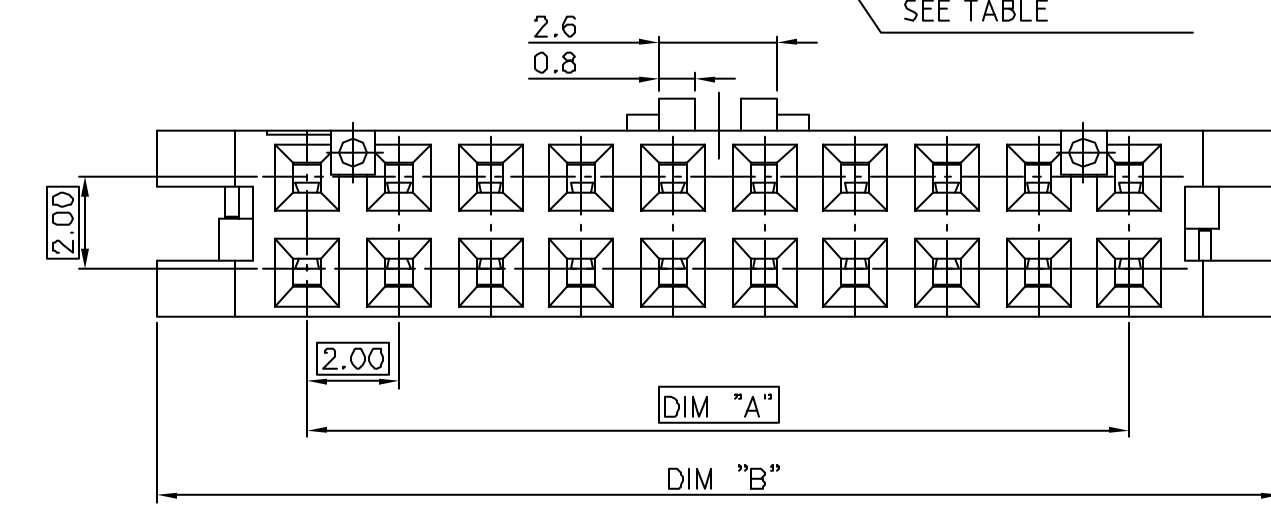
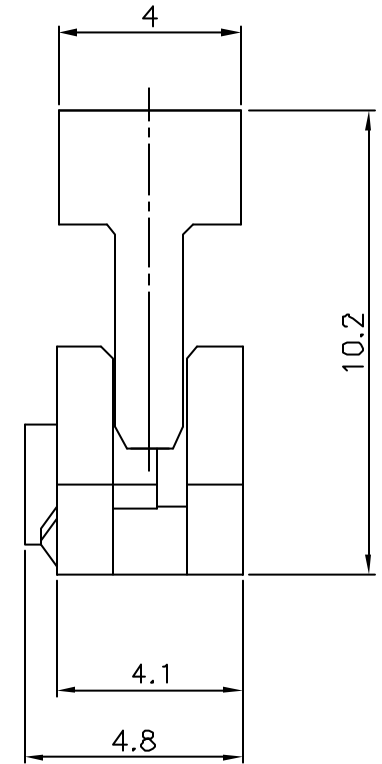
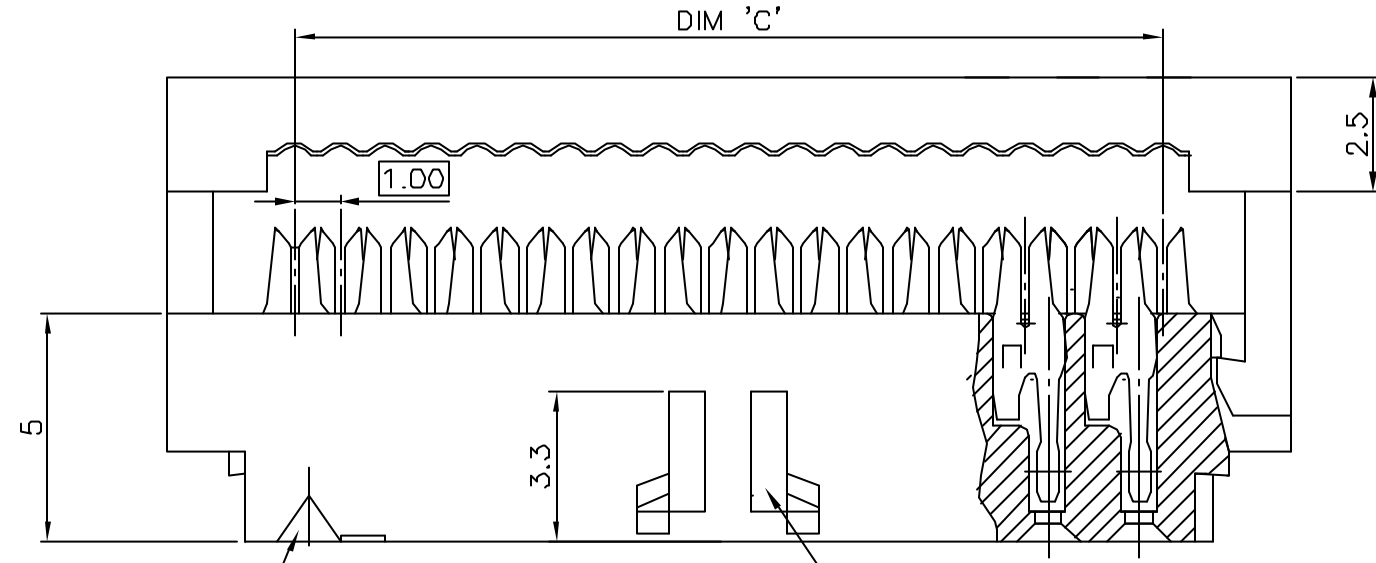


PRODUCT NUMBER

89947-YXXLF

- LEAD FREE, RoHS COMPLIANT  
SEE NOTE 4
- TOTAL NB OF POSITIONS, SHEET 2.
- FEATURES, SHEET 2.



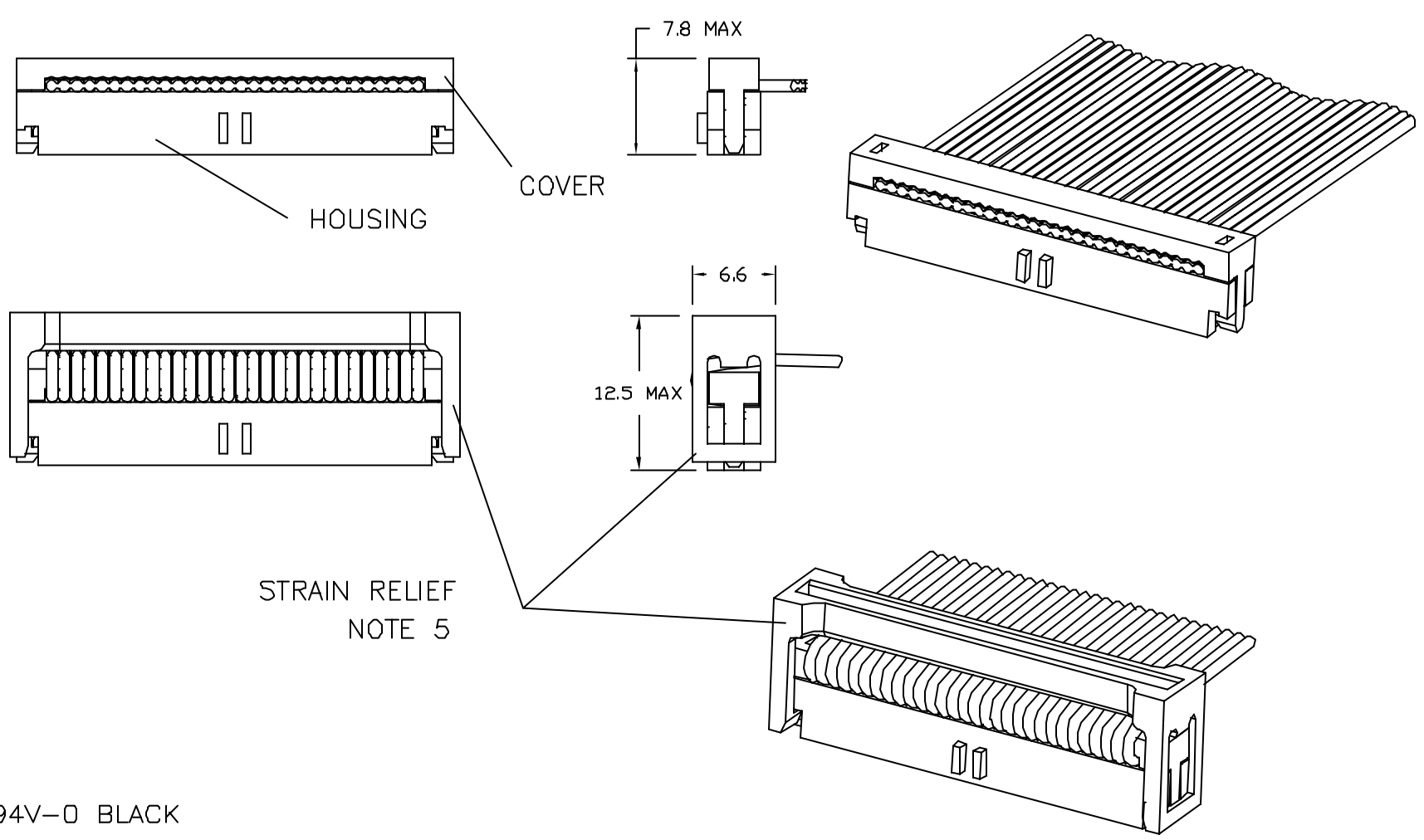
VIEW WITHOUT COVER

|                         |                |     |          |                                       |                               |                  |                                  |  |
|-------------------------|----------------|-----|----------|---------------------------------------|-------------------------------|------------------|----------------------------------|--|
| mat'l. code<br>SEE NOTE |                |     |          | surface<br>ISO 1302 ✓                 | tolerance<br>ISO 406 ISO 1101 | projection<br>mm | product family<br>MINITEK        |  |
| ltr                     | ecn no         | dr  | date     | tolerances unless otherwise specified |                               | mm               | title<br>2.00mm IDC<br>0.76µm Au |  |
| L                       | F08-0211       | LMU | 06.07.03 | angles                                | Linear                        |                  |                                  |  |
| M                       | F07-0215       | LMU | 07.06.12 | 0°±x'                                 | .00±.13                       | scale 1:1        | dwg no<br>89947                  |  |
|                         |                |     |          | dr                                    | LMULIN                        | 07.03.20         | sheet 1 of 2                     |  |
|                         |                |     |          | engr                                  | J.COMPAGNON                   | 07.03.20         | size<br>A3                       |  |
|                         |                |     |          | chr                                   |                               |                  | type<br>Product Customer Drawing |  |
|                         |                |     |          | appd                                  | JM.C                          | 07.03.20         |                                  |  |
| sheet index             | revision sheet | M   | M        |                                       |                               |                  |                                  |  |
|                         |                | 1   | 2        |                                       |                               |                  |                                  |  |



Copyright FCI

| PRODUCT NUMBER | TOTAL NB OF POS | DIM "A" | DIM "B" | DIM "C" |
|----------------|-----------------|---------|---------|---------|
| 89947-X06(LF)  | 2x3             | 4       | 10.6    | 5       |
| 89947-X08(LF)  | 2x4             | 6       | 12.6    | 7       |
| 89947-X10(LF)  | 2x5             | 8       | 14.6    | 9       |
| 89947-X12(LF)  | 2x6             | 10      | 16.6    | 11      |
| 89947-X14(LF)  | 2x7             | 12      | 18.6    | 13      |
| 89947-X16(LF)  | 2x8             | 14      | 20.6    | 15      |
| 89947-X18(LF)  | 2x9             | 16      | 22.6    | 17      |
| 89947-X20(LF)  | 2x10            | 18      | 24.6    | 19      |
| 89947-X22(LF)  | 2x11            | 20      | 26.6    | 21      |
| 89947-X24(LF)  | 2x12            | 22      | 28.6    | 23      |
| 89947-X26(LF)  | 2x13            | 24      | 30.6    | 25      |
| 89947-X28(LF)  | 2x14            | 26      | 32.6    | 27      |
| 89947-X30(LF)  | 2x15            | 28      | 34.6    | 29      |
| 89947-X34(LF)  | 2x17            | 32      | 38.6    | 33      |
| 89947-X36(LF)  | 2x18            | 34      | 40.6    | 35      |
| 89947-X40(LF)  | 2x20            | 38      | 44.6    | 39      |
| 89947-X44(LF)  | 2x22            | 42      | 48.6    | 43      |
| 89947-X48(LF)  | 2x24            | 46      | 52.6    | 47      |
| 89947-X50(LF)  | 2x25            | 48      | 54.6    | 49      |



NOTES :

- 1 - MATERIAL : TERMINAL PHOSPHORE BRONZE  
BASE AND COVER : PBT GLASSFILLED UL 94V-0 BLACK
- 2 - PLATING : GOLD 0.76µm Au MIN ON CONTACT AREA  
NICKEL 1.27µm MIN UNDERPLATING ALL OVER
- 3 - RECOMMENDED CABLE SIZE : AWG28, STRANDED
- 4 - THIS PRODUCT MEETS EUROPEAN UNION DIRECTIVES AND OTHER COUNTRY REGULATIONS AS PER GS-22-008.  
PACKAGING SPECIFICATION AS PER GS-14-920.
- 5 - STRAIN RELIEF (OPTIONAL) SEE DWG 10073978 FOR PRODUCT SIZE AVAILABILITY.

| PRODUCT CODE | AVAILABILITY        |                  |  |
|--------------|---------------------|------------------|--|
|              | WITHOUT CENTRAL KEY | WITH CENTRAL KEY | WITH CENTRAL KEY AND FRICTION LATCH BUMP |
| 89947-7XX    |                     |                  | ○  |
| 89947-3XX    |                     | ○                |  |
| 89947-1XX    | ○                   |                  |  |

|                         |                |     |          |                                       |                               |                  |                                  |
|-------------------------|----------------|-----|----------|---------------------------------------|-------------------------------|------------------|----------------------------------|
| mat'l. code<br>SEE NOTE |                |     |          | surface<br>ISO 1302 ✓                 | tolerance<br>ISO 406 ISO 1101 | projection<br>mm | product family<br>MINITEK        |
| L                       | F08-0211       | LMU | 06.07.03 | tolerances unless otherwise specified | .0±.3                         | scale 1:1        | title<br>2.00mm IDC<br>0.76µm Au |
| M                       | F07-0215       | LMU | 07.06.12 | angles Linear                         | .00±.13                       |                  |                                  |
|                         |                |     |          | 0'±x'                                 | .000±.05                      |                  |                                  |
|                         |                |     |          | dr                                    | L.MULIN 07.03.20              | FCJ              | dwg no                           |
|                         |                |     |          | engr                                  | J.COMPAGNON 07.03.20          |                  | sheet 2 of                       |
|                         |                |     |          | chr                                   |                               |                  | size                             |
|                         |                |     |          | appd                                  | JM.C 07.03.20                 |                  | 89947                            |
| sheet index             | revision sheet |     |          |                                       |                               |                  | Product Customer Drawing         |



Copyright FCJ