

- 1
- 2
- 3
- 4
- 5
- 6
- 7
- 8
- 9
- 10
- 11
- 12
- 13
- 14
- 15
- 16
- 17
- 18

MATERIAL

Zinc-plated steel housing.

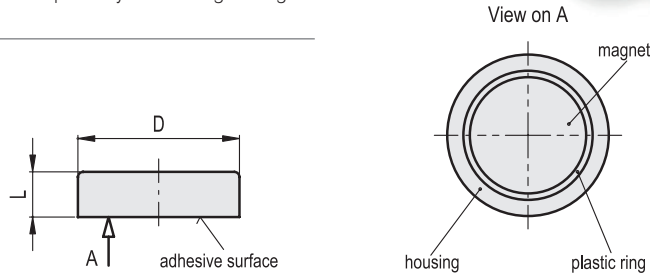
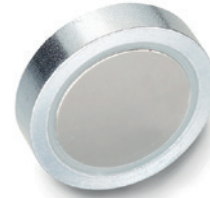
STANDARD EXECUTIONS

- **RMA-HF**: hard ferrite magnet, resistant to temperatures up to 200°C.
- **RMA-SC**: (SmCo) Samarium cobalt magnet, resistant to temperatures up to 200°C.
- **RMA-ND**: (NdFeB) Neodymium- iron-boron magnet, resistant to temperatures up to 80°C.

Retaining magnets technical data (on page 756).

FEATURES AND APPLICATIONS

RMA flat retaining magnets are shielded magnetic systems with high performances and moderate overall dimensions. These magnets are generally fixed in place by means of glue or grub screws.



RMA-HF

Code	Description	D	L	Nominal adhesive forces* [N]	⚖️
501001	RMA-HF-10	10 +0.1/-0.1	4.5 +0.2/-0.1	4	2
501003	RMA-HF-13	13 +0.1/-0.1	4.5 +0.2/-0.1	10	3
501005	RMA-HF-16	16 +0.1/-0.1	4.5 +0.2/-0.1	18	5
501007	RMA-HF-20	20 +0.1/-0.1	6 +0.2/-0.1	30	10
501009	RMA-HF-25	25 +0.1/-0.1	7 +0.3/-0.1	40	18
501011	RMA-HF-32	32 +0.1/-0.1	7 +0.3/-0.1	80	29
501012	RMA-HF-36	36 +0.2/-0.1	7.7+0.3/-0.2	100	39
501013	RMA-HF-40	40 +0.2/-0.1	8 +0.4/-0.1	125	55
501014	RMA-HF-47	47 +0.2/-0.1	9+0.5/-0.2	180	84
501015	RMA-HF-50	50 +0.2/-0.1	10 +0.5/-0.1	220	102
501016	RMA-HF-57	57 +0.2/-0.1	10.5+0.5/-0.2	280	141
501017	RMA-HF-63	63 +0.3/-0.1	14 +0.5/-0.1	350	226
501019	RMA-HF-80	80 +0.5/-0.1	18 +0.5/-0.1	600	468
501021	RMA-HF-100	100 +0.5/-0.1	22 +0.5/-0.1	900	915
501023	RMA-HF-125	125 +0.5/-0.1	26 +0.5/-0.1	1300	1680

RMA-SC

Code	Description	D	L	Nominal adhesive forces* [N]	⚖️
501061	RMA-SC-6	6 +0.1/-0.1	4.5 +0.1/-0.1	5	1
501063	RMA-SC-8	8 +0.1/-0.1	4.5 +0.1/-0.1	11	2
501065	RMA-SC-10	10 +0.1/-0.1	4.5 +0.1/-0.1	20	3
501067	RMA-SC-13	13 +0.1/-0.1	4.5 +0.1/-0.1	40	4
501069	RMA-SC-16	16 +0.1/-0.1	4.5 +0.1/-0.1	60	7
501071	RMA-SC-20	20 +0.1/-0.1	6 +0.1/-0.1	90	14
501073	RMA-SC-25	25 +0.1/-0.1	7 +0.2/-0.2	150	26
501075	RMA-SC-32	32 +0.1/-0.1	7 +0.2/-0.2	220	42

RMA-ND

501031	RMA-ND-6	6 +0.1/-0.1	4.5 +0.1/-0.1	5	1
501033	RMA-ND-8	8 +0.1/-0.1	4.5 +0.1/-0.1	13	2
501035	RMA-ND-10	10 +0.1/-0.1	4.5 +0.1/-0.1	25	2.5
501037	RMA-ND-13	13 +0.1/-0.1	4.5 +0.1/-0.1	60	4
501039	RMA-ND-16	16 +0.1/-0.1	4.5 +0.1/-0.1	95	6
501041	RMA-ND-20	20 +0.1/-0.1	6 +0.1/-0.1	140	14
501043	RMA-ND-25	25 +0.1/-0.1	7 +0.2/-0.2	200	25
501045	RMA-ND-32	32 +0.1/-0.1	7 +0.2/-0.2	350	41

* The values of the nominal adhesive forces are approximate and refer to magnetic properties observed on laboratory samples.