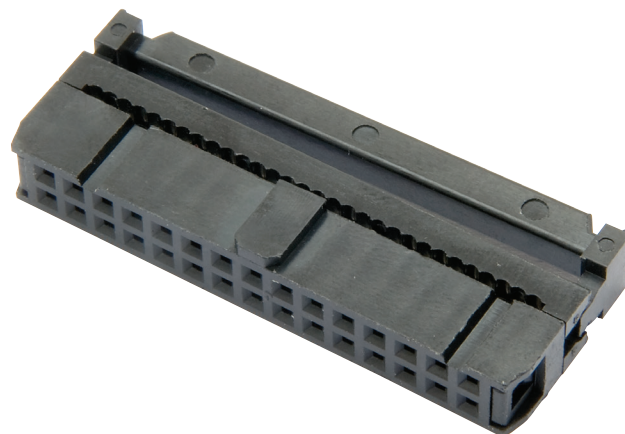
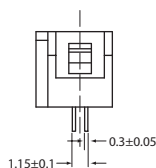
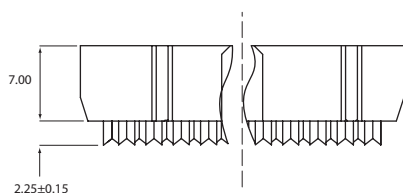
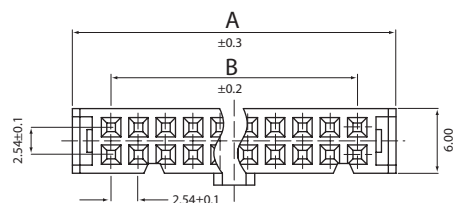


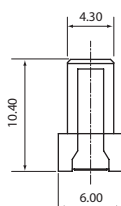
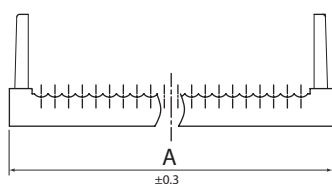
2.54mm Pitch IDC Cable Mounting Socket



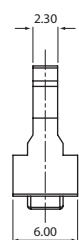
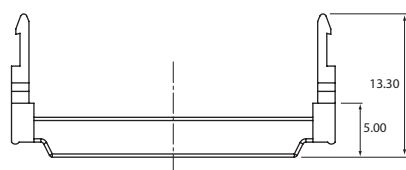
Housing with contact



Upper cover



Top cover



Notes:

1. Electrical characteristics:
 - 1.1 Contact resistance: 20mΩ Max. Initial
 - 1.2 Dielectric withstanding voltage: 500V AC (rms) for 1 minute
 - 1.3 Insulation resistance: 1000MΩ Min.
2. Environmental characteristics:

Operating temperature: $-40^{\circ}\text{C} \sim +105^{\circ}\text{C}$

Order code	Position	Dimensions	
		A	B
19-1017	10	17.36	10.16
19-1018	14	22.44	15.24
19-1019	16	24.98	17.78
19-1020	20	30.06	22.86
19-1021	26	37.68	30.48
19-1022	34	47.84	40.64
19-1023	40	55.46	48.26
19-1024	50	68.16	60.96