

199999/120000 COUNTS DUAL DISPLAY DIGITAL MULTIMETER



GDM-8255A (199999 Counts) GDM-8251A (120000 Counts)



FEATURES

- * GDM-8255A : 199,999 Counts Display
GDM-8251A : 120,000 Counts Display
- * VFD Two Colors Display
- * 0.012% DCV Accuracy
- * True RMS (AC, AC+DC)
- * 9 Major Measuring Functions and 10 Advanced Measurement Functions
- * 2W/4W Resistance Measurement
- * High Voltage 1000V and 10A Current Range
- * Standard Interface : RS-232C, USB Device, Digital I/O
- * Free PC Software (DMM-VIEWER), LabVIEW Driver
- * Optional 16+2 Channels Scanner Card (GDM-SC1 for GDM-8255A only)

GTL-117 Test Lead

For: GDM-8255A/8251A,
GDM-8245/8246



GTL-247 USB Cable

A-A type cable,
Approx. 1.8m
For: GDM-8255A/8251A



GDM-01 Calibration key

For: GDM-8255A/8251A



The GDM-8255A/8251A portable precision multimeters feature 199,999/120,000 counts, a dual display, a 0.012% DCV accuracy and 2w/4w measurement. The VFD display technology provides the excellent observation of contrast and brightness.

The GDM-8255A/8251A carries an extensive list of standard measurement items with a dual-display allowing two measurement items to be displayed simultaneously. Advanced measurement functions, such as Max/Min, Hold, Relative value and Compare, are suitable for a multiplicity of applications such as production testing, research and field verification. The USB, RS-232C and 9-pin digital I/O interface are included as standard features for remote control and data capturing for ATE applications.

For convenient PC-based remote control and extensive data capture, the GDM-8255A/8251A includes DMM-Viewer software at no additional cost. DMM-Viewer mimics the operation of the multimeters on the PC, allowing you to quickly use the software with little effort.

The optional scanner card (GDM-SC1), creates a self-contained multipoint measurement solution with plug-in design. This approach eliminates the complexities of multipoint measurements and data processing. The scanner lets users effectively measure multiple channels connected to a single GDM-8255A. Each scanner card has 16 general purpose channels and 2 extra channels for current (ACI, DCI) measurements. All channels are fully isolated (Hi and Lo). Up to two scanner cards can be inserted into each multimeter for a maximum of 36 channels. These optional modules not only provide customers with a complete hands-free multiple measurement solution, but also provide a cost effect upgrade path compared to purchasing dedicated instruments. (OPTIONAL FOR GDM-8255A ONLY)

| SPECIFICATIONS | | |
|----------------------------|---|----------------|
| | GDM-8255A | GDM-8251A |
| FULL SCALE | | |
| | 199,999 Counts | 120,000 Counts |
| SAMPLE RATE | Slow : 5 1/2 digits, 10 readings/second Medium : 4 1/2 digits, 30 readings/second Fast : 3 1/2 digits, 60 readings/second | |
| DC VOLTAGE | | |
| Range | 100mV, 1V, 10V, 100V, 1000V 5 ranges | |
| Accuracy | ± (0.012% rdg + 5 digits) | |
| Input Impedance | 10MΩ | |
| AC VOLTAGE True RMS | | |
| Range | 100mV, 1V, 10V, 100V, 750V 5 ranges | |
| Accuracy | 20Hz~45Hz : ± (1% rdg + 100 digits) 45Hz ~ 10kHz : ± (0.2% rdg + 100 digits) 10kHz ~ 30kHz : ± (1% rdg + 100 digits) 30kHz~100kHz : ± (3% rdg + 200 digits) | |
| Input Impedance | 1.1MΩ in parallel with approx. 100pF | |
| DC CURRENT | | |
| Range | 10mA, 100mA, 1A, 10A 4 ranges | |
| Accuracy | 10mA, 100mA : ± (0.05% rdg + 15 digits) 1A, 10A range : ± (0.2% rdg + 5 digits) | |
| AC CURRENT TRUE RMS | | |
| Range | 10mA, 100mA, 1A, 10A 4 ranges | |
| Accuracy | 10mA, 100mA range : 20Hz ~ 50Hz : ± (1.5% rdg + 100 digits) 50Hz ~ 10kHz : ± (0.5% rdg + 100 digits) 10kHz~20kHz : ± (2% rdg + 200 digits) 1A, 10A range : 50Hz ~ 10kHz : ± (1% rdg + 100 digits) | |
| RESISTANCE | | |
| Range | 100Ω, 1kΩ, 10kΩ, 100kΩ, 1MΩ, 10MΩ, 100MΩ 7 ranges | |
| 2W Accuracy | 100Ω range : ± (0.1% rdg + 8digits) (*) 1kΩ range : ± (0.08% rdg + 5 digits) (*) 10kΩ ~ 1MΩ 3 ranges : ± (0.06% rdg + 5digits) 10MΩ range : ± (0.3% rdg + 5 digits) 100MΩ range : ± (3% rdg + 8 digits) | |
| 4W Accuracy | 100Ω range : ± (0.05% rdg + 8 digits) (*) 1kΩ ~ 1MΩ 4 ranges : ± (0.05% rdg + 5 digits) 10MΩ range : ± (0.3% rdg + 5 digits) 100MΩ range : ± (3% rdg + 8 digits) | |
| DIODE TEST | Open Circuit Voltage 2.0V, Test Current 0.5mA | |
| FREQUENCY | 10Hz~800kHz | |

BASIC T & M INSTRUMENTS



GDM-8255A

GDM-8251A Rear Panel



GDM-8255A Rear Panel



| SPECIFICATIONS | |
|--|----------------|
| CONTINUITY BEEPER | |
| 1 ~ 100Ω | Define by user |
| TEMPERATURE | |
| 0 ~ 300 °C | J, K, T Type |
| OTHER FUNCTIONS | |
| Auto range / Manual, Math : MX + B / % / 1/X | |
| Max, Min, dBm, dB, REL, Hold, Compare, Store, Recall | |
| DISPLAY | |
| VFD, Two Colors Display | |
| INTERFACE | |
| Digital I/O, USB, RS-232C | |
| POWER SOURCE | |
| AC 100V~240V± 10%, 50/60Hz | |
| DIMENSIONS & WEIGHT | |
| 265(W) x 107(H) x 350(D) mm, Approx. 2.6 kg | |
| NOTE : (*)USE "REL" Mode | |

| ORDERING INFORMATION | |
|---|--|
| GDM-8255A | 199,999 Counts Dual Display Digital Multimeter |
| GDM-8251A | 120,000 Counts Dual Display Digital Multimeter |
| ACCESSORIES : | |
| Quick start user manual x 1, Power cord x 1, Test lead GTL-117 x 1, USB Cable GTL-247 | |
| CD x 1 (including complete user manual, upgrade program and PC software DMM Viewer), | |
| Calibration key GDM-01 x 1 (Compatible with Fluke 5720A/5725A calibrators only) | |
| OPTION | |
| Opt.01 | Scanner Card (GDM-SC1 for GDM-8255A only) |
| OPTIONAL ACCESSORIES | |
| GTL-108A | 4W Type test lead |
| GTL-232 | RS232C Cable, 9-pin female to 9-pin, null modem for computer |
| FREE DOWNLOAD | |
| PC Software | DMM-VIEWER |
| Driver | USB Driver |
| | LabVIEW Driver |

GDM-SC1 Scanner card

Multipoint Testing can be facilitated by simple insertion of scanner card.
For: GDM-8255A



GTL-108A 4W Type Test Lead

For: GOM-801H/802, GDM-8255A/8251A



GTL-232 RS-232C Cable

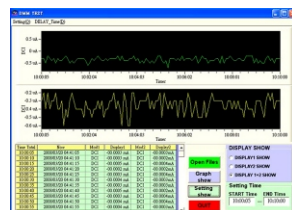
For: GDM-8255A/8251A



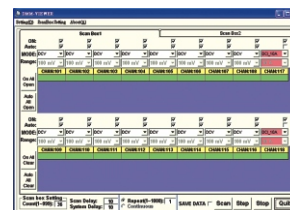
DMM-Viewer PC Software



General Control Mode



Reload-Data Graphic



Scanner Control Mode