

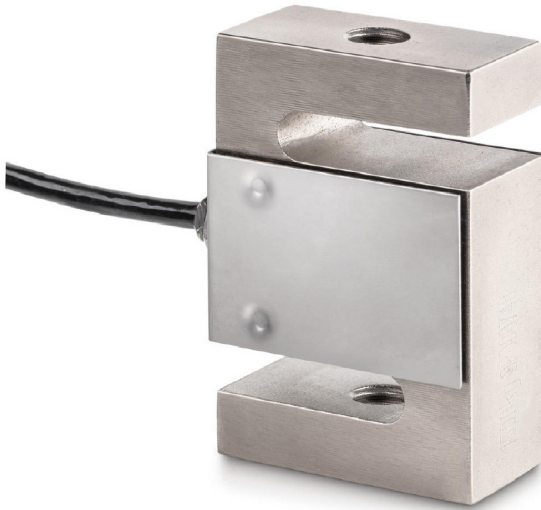
KERN CS100-3P1

4 wire  measuring cells for force and mass measurement

KERN®

Piktogramme

STANDARD



Measuring system

Combined Error:	0,020 %
Load cell connection:	4-Leiter
Nominal sensitivity:	2
OIML class:	C3
Resolution Load cell  Verifiable:	3000 e
Weighing capacity [Max]:	100 kg
Y value:	10000

Environmental conditions

Maximum operating temperature:	65 C
Maximum operating temperature:	40 C
Minimum ambient temperature:	-35 C
Minimum operating temperature:	-10 C

Category

Brand:	Sauter
--------	--------

Packaging & shipping

Delivery:	24 h
Dimensions packaging (WxDxH):	185 x 155 x 60 mm
Gross weight:	685 g
Net weight:	580 g
Shipping method:	Parcel service

Construction

Cable length:	3 m
Dimensions (WxDxH):	50,8 x 76,2 x 20,8 mm