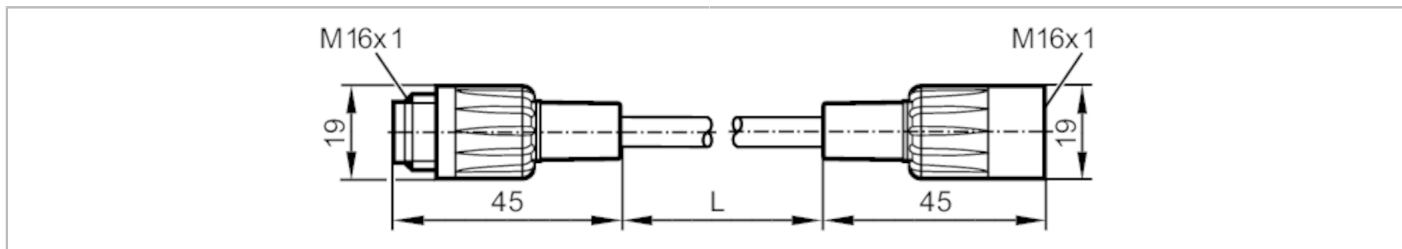


E2M206



Adapter cables for cameras with video output

CONNECTION CABLE M16 21 M



Application

Special feature	Free from silicone; Gold-plated contacts
Design	camera with video output O2M20x
Free from silicone	yes

Electrical data

Operating voltage	[V]	< 60 DC
Protection class		II
Max. current load total	[A]	4

Operating conditions

Ambient temperature	[°C]	-45...85
Protection		IP 67

Mechanical data

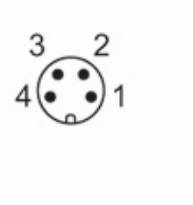
Weight	[g]	1093
Materials		housing: PVC; Sealing: EPDM
Material nut		PVC / PVC

Remarks

Pack quantity		1 pcs.
---------------	--	--------

Electrical connection - plug

Connector: 1 x M16, straight; Locking: PVC; Contacts: gold-plated; Tightening torque: 0.6...1.5 Nm



E2M206



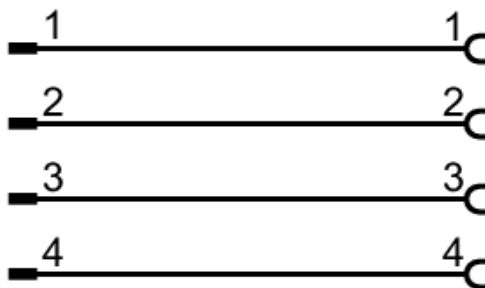
Adapter cables for cameras with video output

CONNECTION CABLE M16 21 M

Electrical connection

Cable: 21 m, PVC, black, \varnothing 6 mm; 3 x 0.34 mm² / AWG 22 + 1 x 0.11 mm² / AWG 26

Connection



Electrical connection - socket

Connector: 1 x M16, straight; Locking: PVC; Contacts: gold-plated; Tightening torque: 0.6...1.5 Nm

