

2002-05-13

ELFA

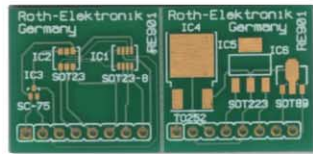
PRODUKTINFORMATION

Vi reserverar oss mot fel samt förbehåller oss rätten till ändringar utan föregående meddelande

ELFA artikelnr

48-329-60 Labbkort RE901 EP

SOT 23 SMD Multiadapter



Stock-No. RE 901

- Multiadapter circuit board with six micro-miniature semiconductor circuits
- The PCB can be equipped with twenty different types of semiconductors listed in the table
- Epoxyd fibre-glass FR4 1.50 mm single-side 35 µm CU
- 8-pole pin terminal connection spacing 2.54 mm, boring diameter 1.00 mm
- Component side chemical nickel/gold, solder stop-off mask and board assembly print
- Pre-notched break-off lines to separate the modules
- Tanning data (format Gerber) for production of the solder stop-off mask and the solder paste print are available free of charge on request
- Size: 22.86 mm x 46.72 mm

Layout	Pad Size mm	Pad Pitch mm	Size mm	Configuration	Accommodates
TO252	*	*	*	*	TO252
SOT223	*	*	*	*	SOT223
SOT89	*	*	*	*	SOT89
SOT23	0,71 x 1,0	0,95	2,4	2 Reihen x 3	SC59, SC74, SC74A, SMT3, SMT5, SMT6, SOT23, SOT23-5, SOT23-6
SOT23-8	0,46 x 1,1	0,65	2,4	2 Reihen x 4	SC70, SC88A, SOT23-8, UMT3, UMT5, UMT6
SC75	*	*	*	*	EMT3, SC75A

* Layout industry standard