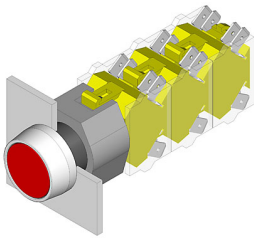


# EAO – Your Expert Partner for Human Machine Interfaces

## 704.012.2 - Pushbutton actuator

### 704.012.2 - Pushbutton actuator



*Attention: The preview is based on a sample product. This can differ from your current configuration.*

#### Mounting

Mounting cut-out	Ø 22,3 mm
Design	raised

#### Front

Front shape	round
Front dimension	Ø 29 mm
Front bezel colour	natural anodized
Front bezel material	Aluminium

#### Other Attributes

Weight	0,040 kg
--------	----------

#### Operating-/Indication part

Lens optics	transparent
Lens material	Plastic
Lens colour	red
Lens profile	flat
Lens illumination	non-illuminative

#### IP-Rating

Front protection	IP65
------------------	------

#### Actuator

Switching action	Momentary
Housing material	Plastic
Housing colour	grey

#### Switching element

max. number of switching elements	3
-----------------------------------	---

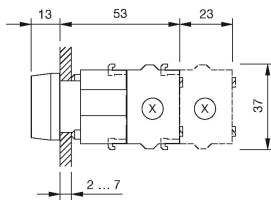
#### Function

Pushbutton

# EAO – Your Expert Partner for Human Machine Interfaces

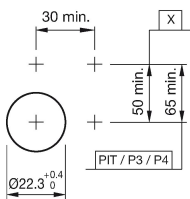
704.012.2 - Pushbutton actuator

## Dimensions



X = Screw terminal

## Mounting cut-outs



PIT = Push-in terminal

## Wiring diagram



## Additional information

Frontring with protective cover to be mounted with a torque of 40 Ncm onto actuator  
Max. 3 switching elements can be clipped on  
The colour of anodized aluminium parts can vary due to technical production reasons

## Legend

Switching action: B = Momentary