



In application of the Directive ref. 89/686/EEC of the 21st of December 1989, concerning the alignment of member state legislation relating to personal protective equipment and the decrees n° 92-765, 766 and 768 of 29th of July 1992 concerning the transposition of this Directive into French law,

CTC

4, rue Hermann Frenkel - 69367 Cedex 07 - France

Tel +33 (0)4 72 76 10 10 - Fax +33 (0)4 72 76 10 00 - E-Mail : ctclyon@ctcgroupe.com - www.ctc.fr

Comité Professionnel de Développement Cuir Chaussure Maroquinerie - Loi 78-654 du 22.06.1978 - Siret 77564972600160 - Code NAF 9412Z - TVA FR 88775649726

authorized by decree of the Ministry of Work, Employment and Health of the 20th of December 2010,

registered under the number 0075, published in OJEC, delivers :

CE TYPE EXAMINATION CERTIFICATE 0075/1524/162/09/11/0494 - EXT 01/10/11

To the following model of personal protective equipment :

- * protective glove against mechanical risks.
- * reference of the model : 1327
- * responsible for placing on the market :

* distributor :

Richard Leipold GmbH

Industriestrasse 11, 34260 Kaufungen

Germany

Description of the protective glove, reference of technical rules verified in the context of the CE type examination and informations indicated on the product are detailed in the following pages of this certificate.

Issued by Lionel GAUDILLERE

Drawn up in Lyon, on October 11th, 2011



4, rue Hermann Frenkel
69367 Lyon Cedex 07 - France

Tel. +33(0)4 72 76 10 10 - Fax +33(0)4 72 76 10 00
www.ctcgroupe.com

NOTA : Any modification to new items of the personal protective equipment object of this CE type approval certificate or any modification of the information contained in the manufacturer technical file which served for the deliverance of the CE type approval certificate (change of adress, change of company status) should be brought to the attention of the notified body in accordance with law n° R. 4313-38 of the French Code of Work.

1. DESCRIPTION OF THE PROTECTIVE GLOVE

According to the technical file index : 01

Reference : 1327

Minor Variant of the model :10-100, G/G, P/N

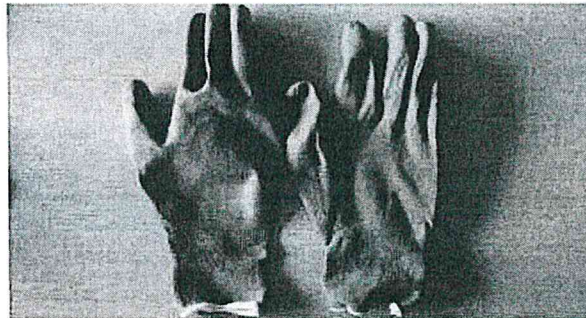
Dated : OCTOBER 2011

Grey/Grey PU Palm Dipped

Available sizes :

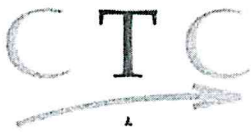
7 8 9 10 11 12

Visual description :



Material :

	Colour	Material	Gauges	Thikness
PALM	Grey	PU	13	
BACK	Grey	Nylon	13	
LINING				
CUFF	Grey	Nylon	13	
BINDING	White	Polyester		



2. PROTECTION SCOPE

Compliance with the essential requirements of the Directive 89/686/EEC has been verified by using following technical rules:

- * EN 420:2003+A1:2009 - General requirements for gloves and test methods
- * EN 388:2003 - Protective glove against mechanical risks
- * Directive 2002/61/CE : - This product fulfills the requirements given by the Directive.

References of test reports performed in order to verify the compliance with the requirements of the technical rules :

Laboratory	CTC Asia	CTC France	Other
EN 420	SH60985-11		SH60985-11
Azo	SH60985-11		
EN 388	SH60985-11		

Performance levels offered against mechanical risks (EN 388:2003) are:

Abrasion resistance	Blade cut resistance	Tear strength resistance	Puncture resistance
4	1	3	1

The levels of performance have been measured on the palm



3. MARKING

Each glove is clearly marked with the following information:

- * Logo of the authorized representative:
- * **CE** marking
- * reference of the model: 1327
- * size
- * pictogram for mechanical risks followed by the performance levels
- * information pictogram

Marking example:

