

# Mounting System

for 40 × 40 × 55 mm (Q/1Q) and Reflectors

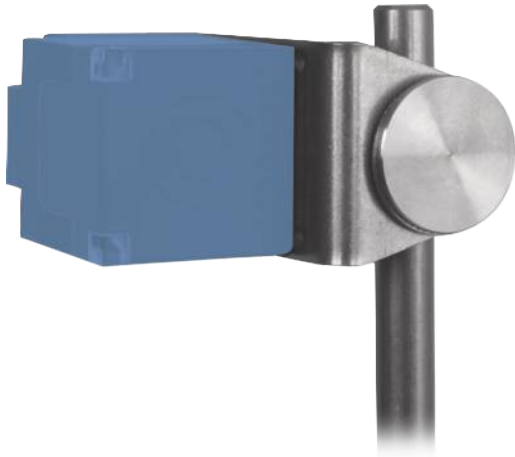
## WR1S12AL

Part Number

### Technical Data

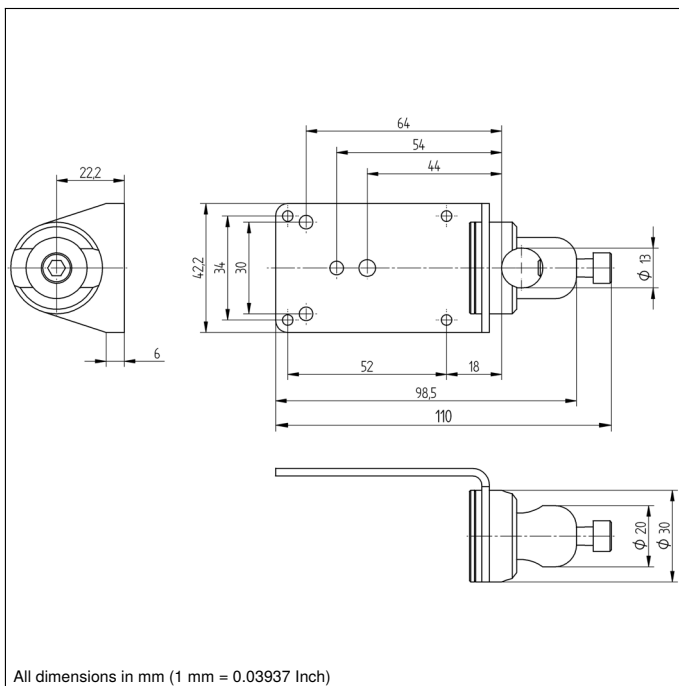
#### Mechanical Data

Material Mounting Head	Aluminum
Material Mounting Plate	Stainless Steel V2A
for Round Profile Diameter	8...12,5 mm
Packaging unit	1 Piece
Mounting Number	<b>390</b>
Suitable Mounting Technology No.	<b>550</b>



- Aluminum
- Flexible alignment possibilities
- Simple installation

For 40 × 40 × 40 mm, RE6040BA, RE6151BM, RE6151BA, RR84BA, RF4050



All dimensions in mm (1 mm = 0.03937 Inch)

