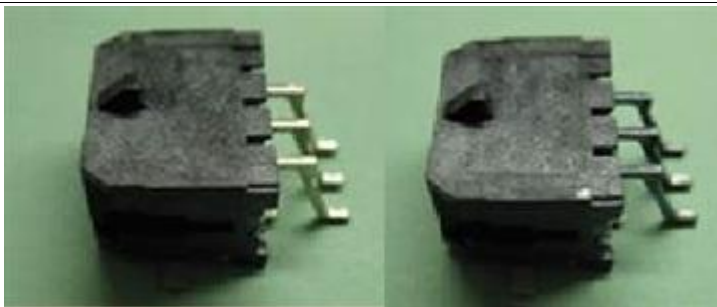


Global Change Notification (GCN)

Product Family	Micro-fit	10664055
		GCN Number
Series	Various	April 13, 2015
		Date Issued
Reason For Change	Manufacturing Process Change	
Change Description	<p>As part of our ongoing efforts to continuously improve Molex products, we are announcing a change in our Micro-Fit, 3.0TM product line. Prior to the implementation of the RoHS initiative resulting in widespread use of lead free solder methods, Molex has used a bright tin over nickel plating on all Micro-Fit, 3.0TM pcb header assemblies. While this plating performs excellently, there have been cases where our customer's solder profiles, combined with the organic brighteners used, resulted in a discoloration of the tin plating, and very rarely, an outgassing of the organic brighteners. While this physical appearance and the outgassing did not affect any of the functional properties of our product, the visual change did cause concern among some customers. Attached are photos showing a "normal" terminal, and one showing the discoloration. Due to the narrow operating window for the organic brighteners, Molex Plating Engineering has determined that it is not feasible to keep the brightener levels below what will discolor, yet above what is needed to create the desired finish, on a consistent basis.</p> <p>The reflowed matte tin plating thickness of 60 micro inches over 50 micro inches nickel is validated after plating but prior to the reflow process and not post-reflow process. This ensures the correct plating thicknesses have been applied to the terminals to meet the required characteristics and properties of the product. The actual plating thickness value, measured pre-reflow process, is available from the manufacturing facility upon request.</p> <p>This change notice contains information regarding part numbers affected, and timing for the implementation of this change. If this notification does not address all of your questions, please contact your local Molex account representative, or you may contact me personally using the information below. We at Molex appreciate your understanding and patience as we transition to this new plating in order to continue to provide our customers with the highest quality products that you have come to expect.</p> <p>John Scott Luthy Global Product Manager Commercial Products Division Molex Incorporated Phone: 1-630-527-4866 Cell: 1-630-797-0857 Fax: 1-630-813-4866</p>	



Current plating and discoloration



New reflowed matte tin plating

Part Numbers Affected	Please refer to CustomerPartList.csv attached to e-mail message.
Reason For Short Notice Exception	
Assessment Of Change (How Product Will Be Qualified & Validated)	Molex Engineering has conducted a thorough evaluation and determined that transitioning to reflowed matte tin plating eliminated the above concerns/effects, and provides a high quality finish that Molex customers have come to expect. The attached photos show the appearance of the new reflowed matte tin plating compared to the previous bright tin plating.
Internal Molex Qualification Date (Planned Date Information Available)	March 11, 2015
Sample Availability Date (Changed Part)	March 16, 2015
Date of Implementation	May 06, 2015
Method of Identifying Change	Product made after April 20, 2015 could contain this change
Recommended Replacement Parts	Not Applicable
Last Time Buy Date for Obsolete Parts	
Last Time Ship Date for Obsolete Parts	

Contact	Name	E-mail	Phone Number
Sales Engineer	Please refer to e-mail message for your local sales engineer.		
Regional Coordinator (Japan and Korea)	Naomi Maruyama	Naomi.Maruyama@molex.co.jp	+81-46-265-2416
Regional Coordinator (Asia- excluding Japan and Korea)	Allen Yu	Allen.Yu@molex.com	+886-2-66251751
Regional Coordinator (Europe, Middle East, Africa)	Agnes Mburu	Agnes.Mburu@molex.com	+31-40-295-8271
Regional Coordinator (Americas)	Maria Sullivan	Maria.Sullivan@molex.com	1-727-322-4352

Molex, Inc.
 2222 Wellington Court
 Lisle, IL 60532
 TEL: 630-969-4747
www.molex.com