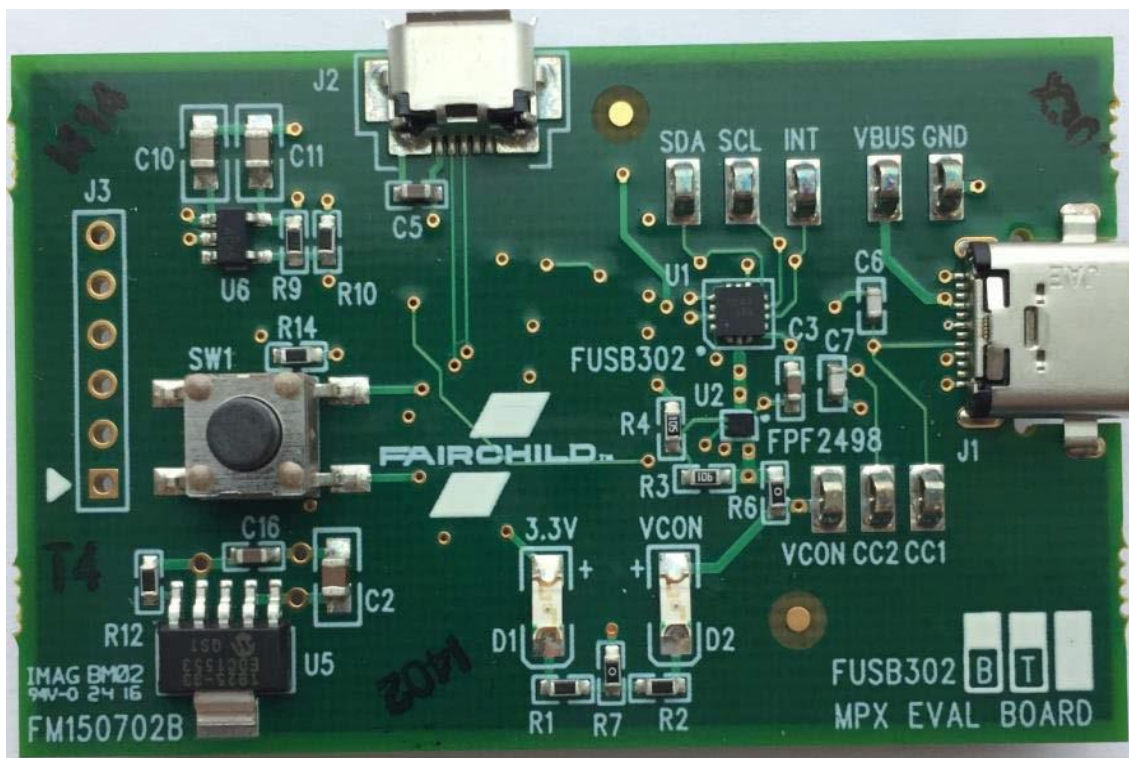


ON Semiconductor®

ON

FUSB302GEVB: Programmable USB Type-C Controller with PD

The FUSB302GEVB evaluation board targets system designers looking to implement a DRP/SRC/SNK USB Type-C connector with low amount of programmability. The FUSB302GEVB enables the USB Type-C detection including attach, and orientation. The FUSB302 integrates the physical layer of the USB BMC power delivery protocol to allow up to 100 W of power and role swap. The BMC PD block enables full support for alternative interfaces of the Type-C specification. Reference code is available for the FUSB302 for easy implementation of Type-C and USB BMC power delivery protocol across several embedded controller platforms. Click on the Reference Code request link to the right.



Features and Applications

Features

- Full Type-C 1.1 Support. Integrates the following functionality of the CC pin
- Dedicated devices can operate both on a Type-C receptacle or a Type-C plug with a fixed CC and VCONN channel.
- Software configurable either as a dedicated host, dedicated device, or dual role
- Dual-Role Functionality with Autonomous DRP Toggle
- Ability to connect as either a host or a device based on what has been attached.
- Attach/Detach Detection as Host

Evaluation/Development Tool Information				
Product	Status	Compliance	Short Description	Parts Used
FUSB302TGEVB	Active	Pb-free	Programmable USB Type-C Controller with PD	FUSB302TMPX