

## MB CAP ULTRA BUFFER MODUL

IN: 20,4-26,4VDC OUT:23VDC/3A for max.1A/21S

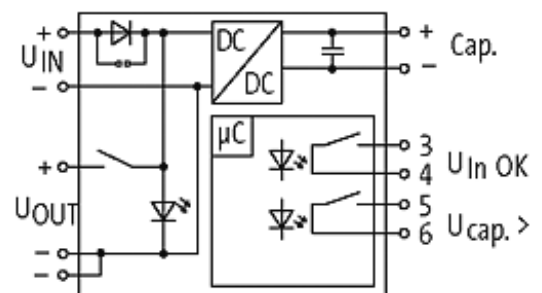
INPUT: 24 V DC (SELV/PELV)

OUTPUT: max. 3 A

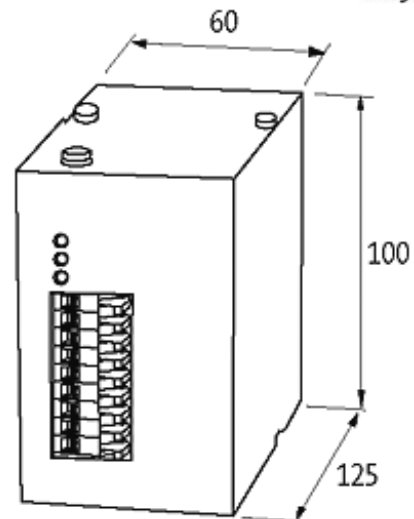
Buffer time: 7 s

### [Link to Product](#)

#### Illustration



stay connected



Product may differ from Image

### Approvals



### Input

Input voltage	20.4...26.4 V DC
Input current	3 A
Loading time	min. 25 s

### General data

Standards	(EN 60950), (EN 50178) SELV/PELV
Mounting method	DIN-rail mountable TH35 (EN 60715)
Efficiency	90 %
Temperature range	-20...+60 °C (storage temperature -20...+60 °C)

### Output

Output voltage	23 V DC $\pm 2$ %
Output current	max. 3 A (+60 °C)
Buffer time	7 s (3 A); 21 s (1 A)

### Commercial data

country of origin	DE
customs tariff number	85322900
minimum order quantity	1